

## Table of contents

Table of contents .....	1
About DMXzone Font Awesome.....	2
Features in Detail.....	3
The Basics: Insert DMXzone Font Awesome on your Page .....	12
Advanced: Setup DMXzone Font Awesome Include Options .....	17
Video: Insert DMXzone Font Awesome on your Page .....	21
Video: Setup DMXzone Font Awesome Include Options .....	21
Video: Insert Icons on your Page Using DMXzone Font Awesome .....	21

## About DMXzone Font Awesome

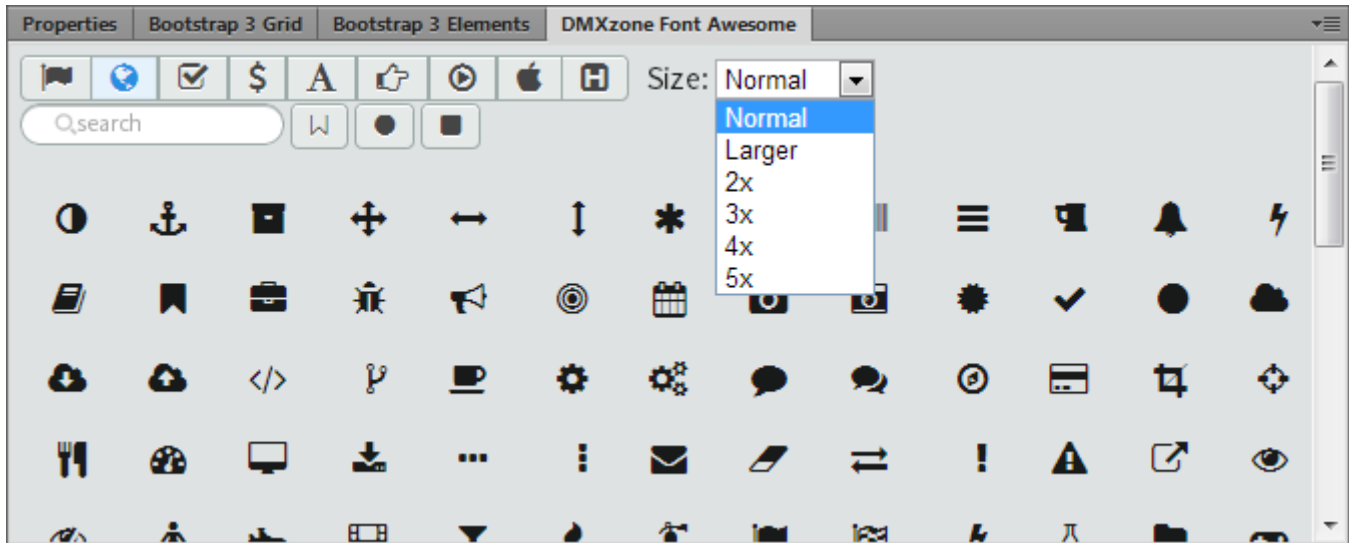


Bring your design to the next level by enriching it with this collection of amazing, fully scalable web font icons! Font Awesome contains 369 icons, including all icons from the Twitter Bootstrap framework. They are fully editable and available at your fingertips in Dreamweaver with the visual inspector where you can easily search and directly use the icons you need with a single click!

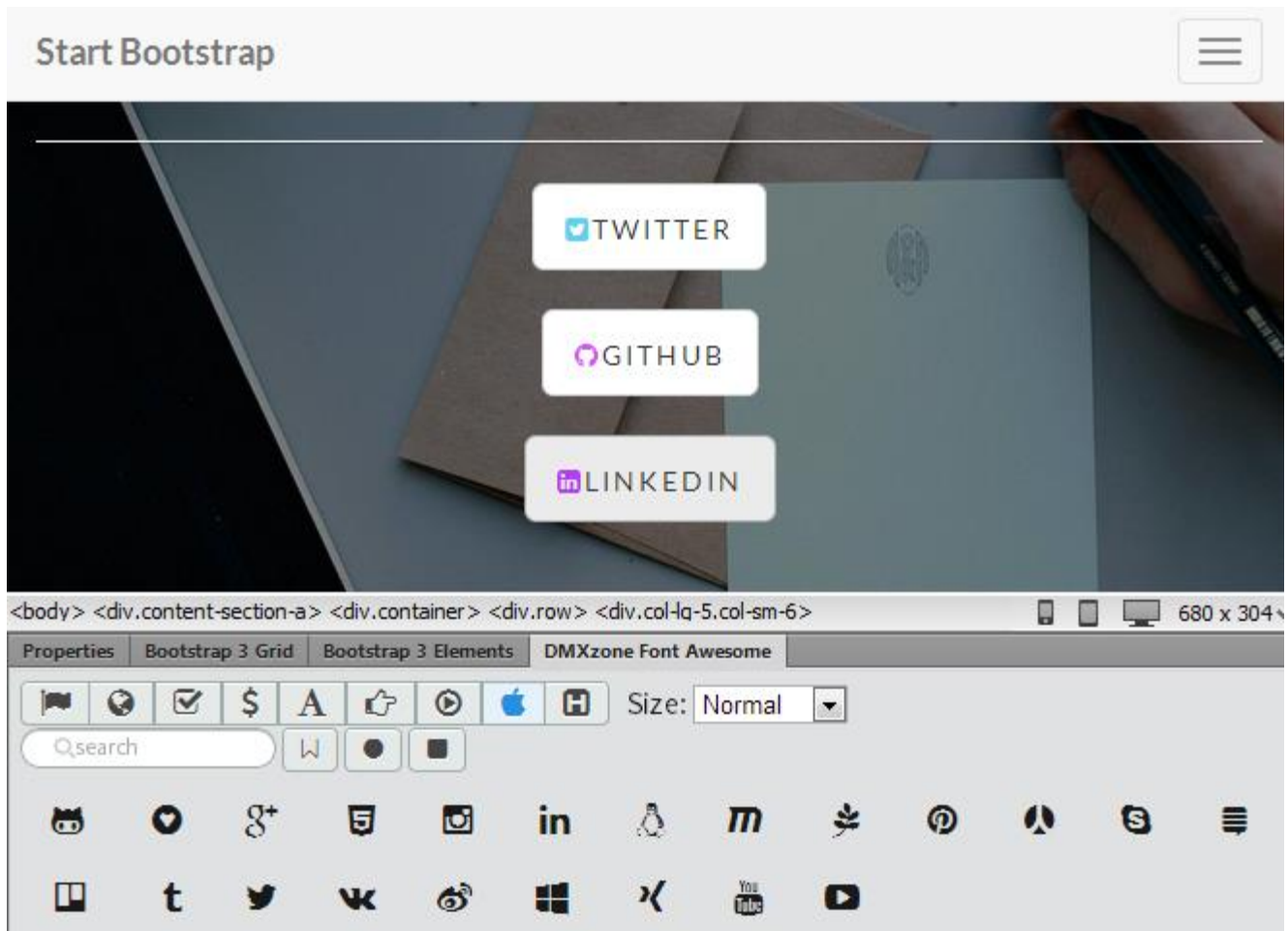
DMXzone Font Awesome's icons are designed to be fully compatible with [Bootstrap](#) and [Bootstrap 3](#), as well as [HTML5 Data Bindings](#).

## Features in Detail

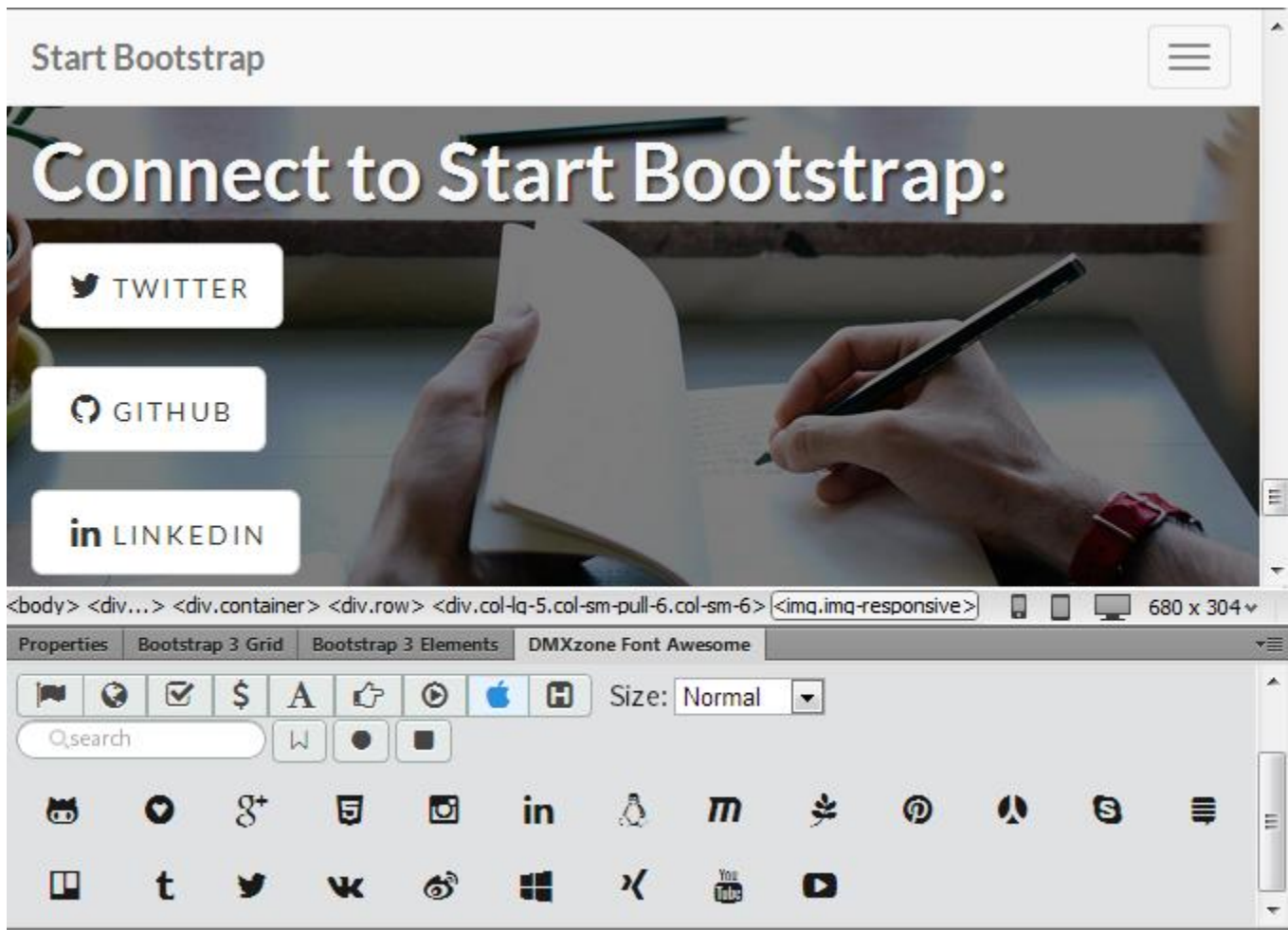
- **369 scalable icons - DMXzone Font Awesome** contains 369 fully scalable icons, which look great at any size, with amazing Dreamweaver Live preview.



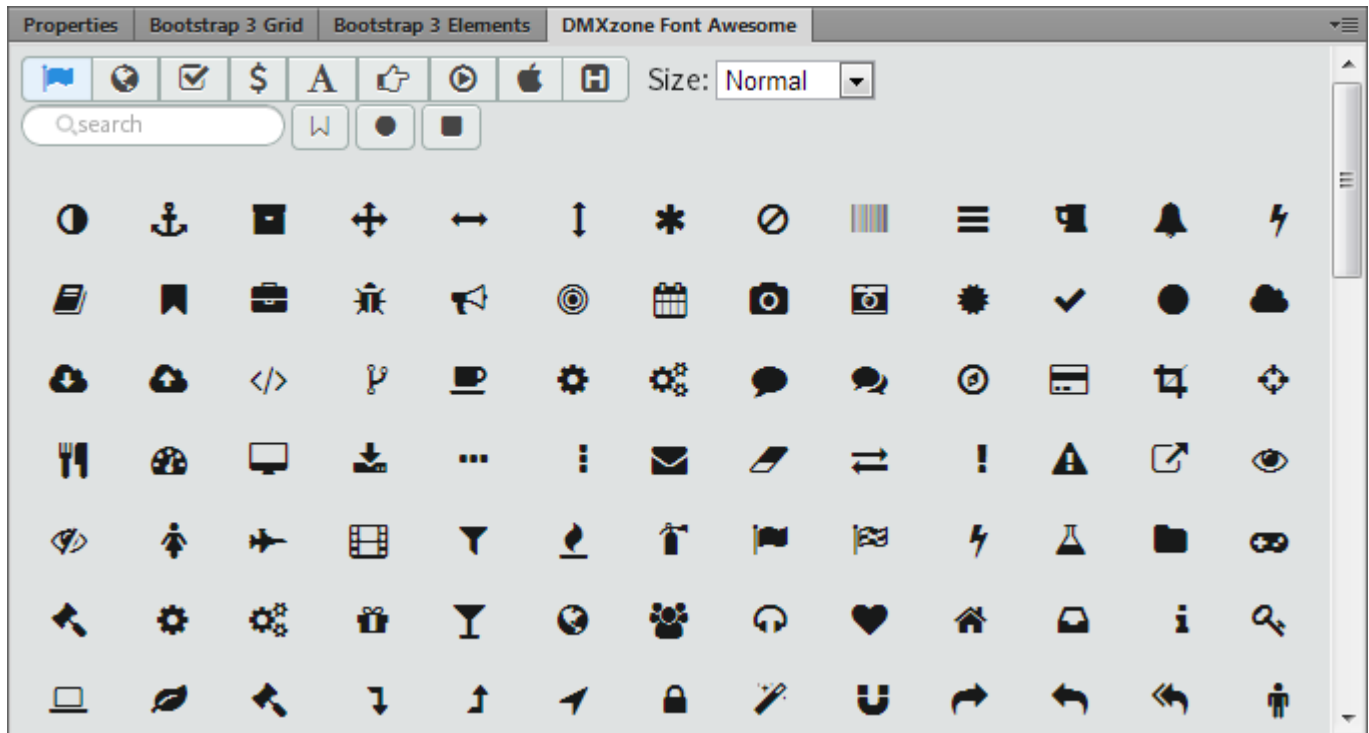
- **Fully editable icons** - You can easily style any icon color, size, shadow and anything that is possible through the CSS.



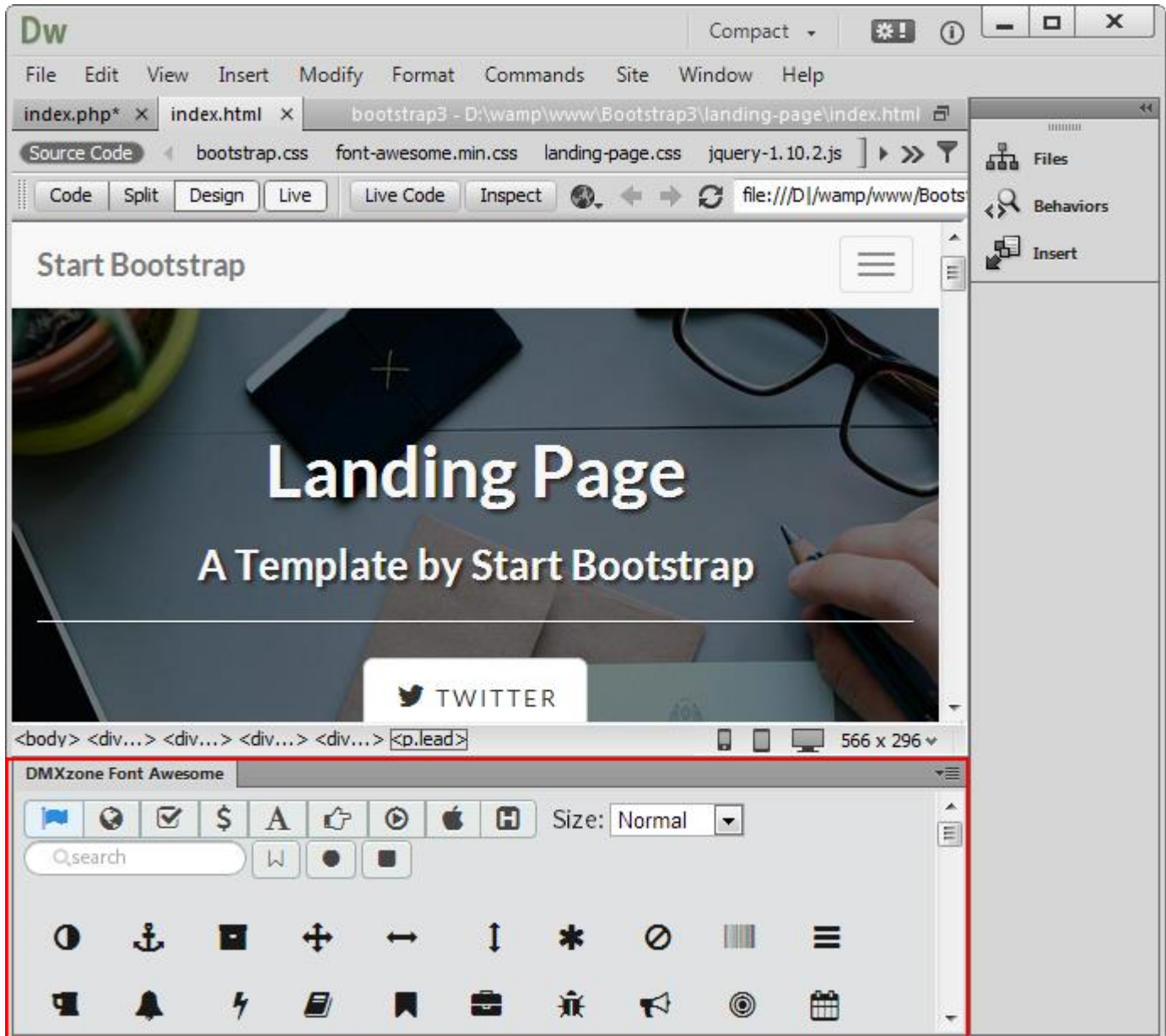
- **Full support for DMXzone Bootstrap and Bootstrap 3** - The icons are designed to be fully compatible with [Bootstrap](#) and [Bootstrap 3](#).

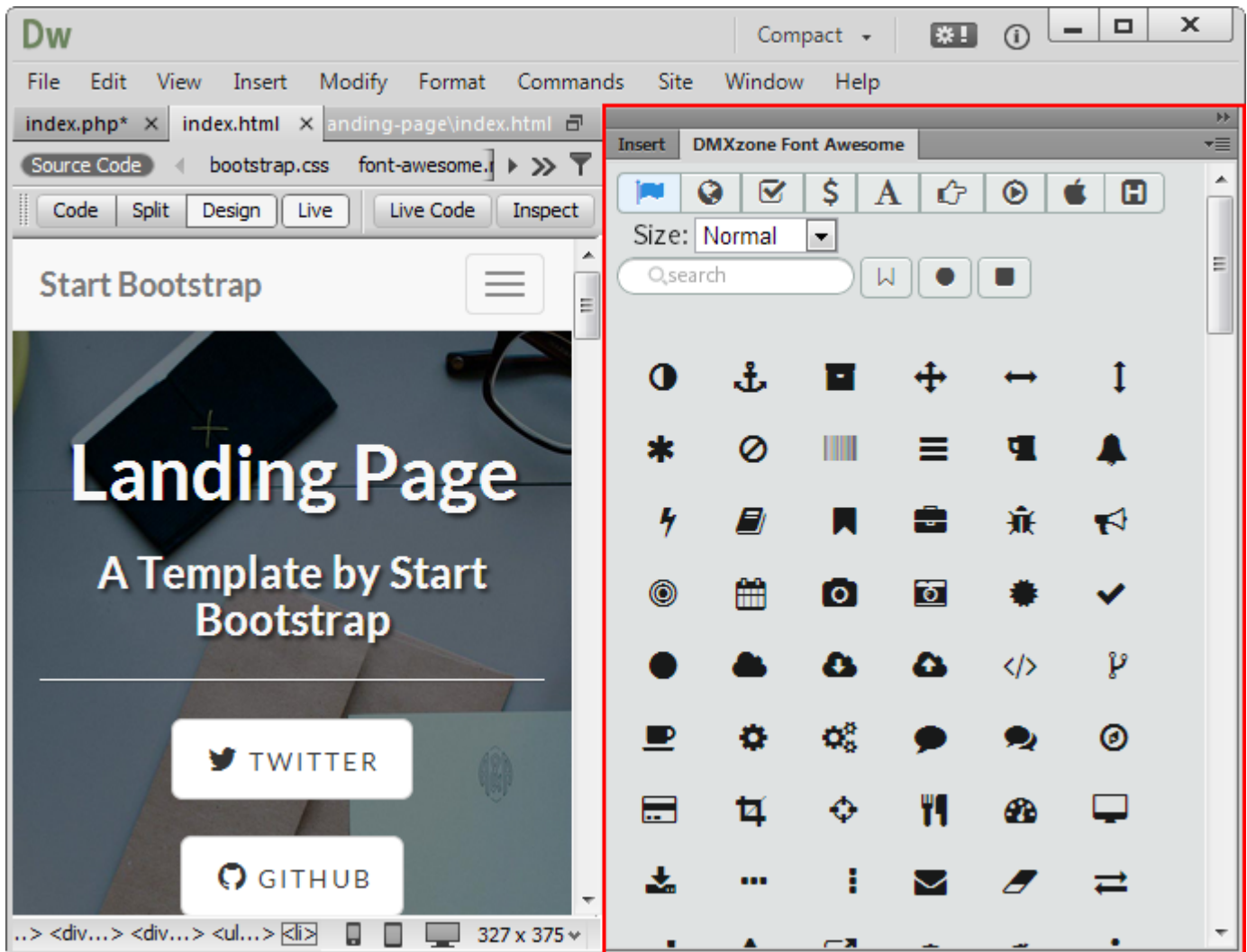


- **DMXzone Font Awesome dedicated floater** - With the greatly helpful and easy accessible floating panel you have all available icons just a mouse click away.

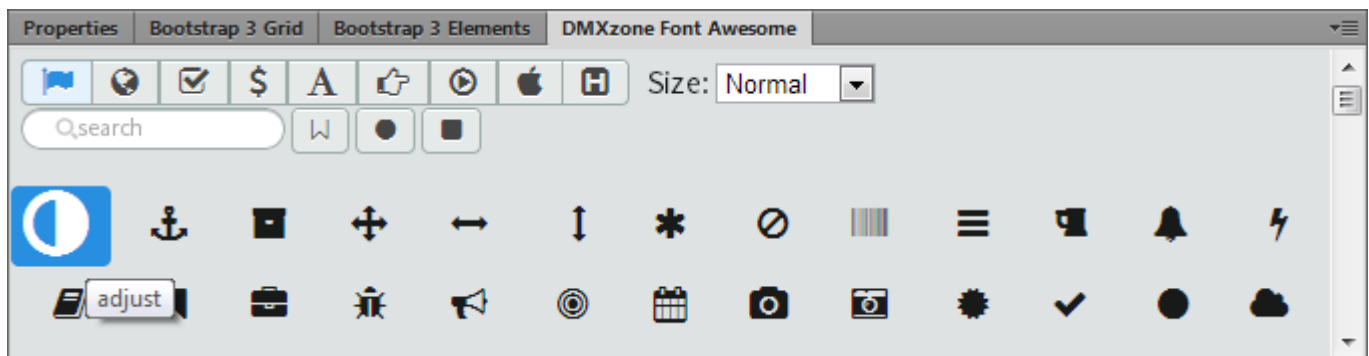


- **Fully responsive floating panel inspector** - The floating panel can be docked on any side of your Dreamweaver and is fully responsive.



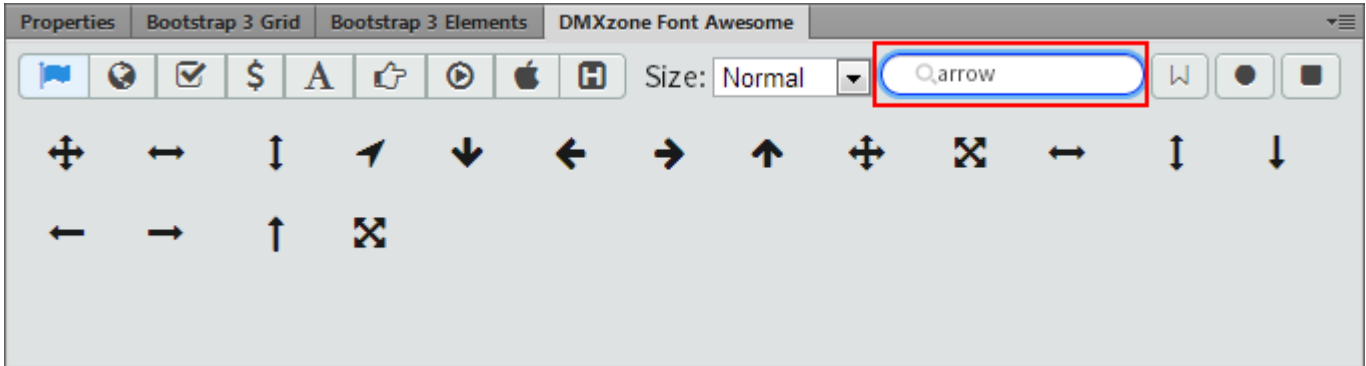


- **Great Dreamweaver preview** - In the floating panel you can get a larger preview of the icon on mouse over.

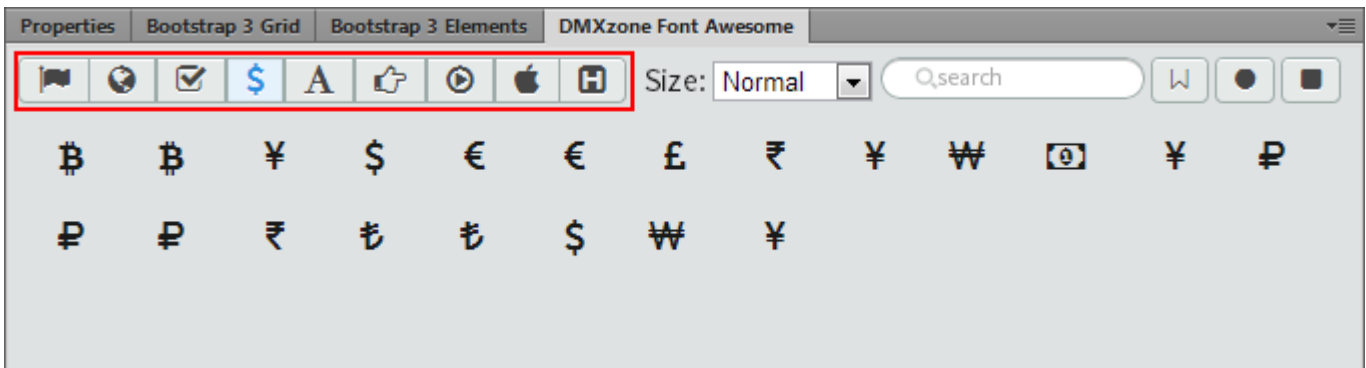




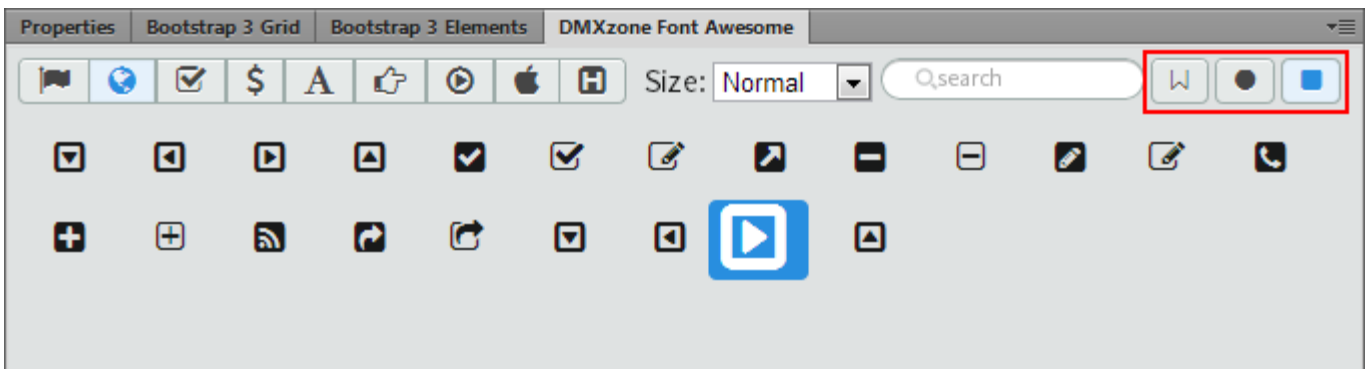
- **Quick icon search** - In the search field you can look for the desired icon by typing its name.



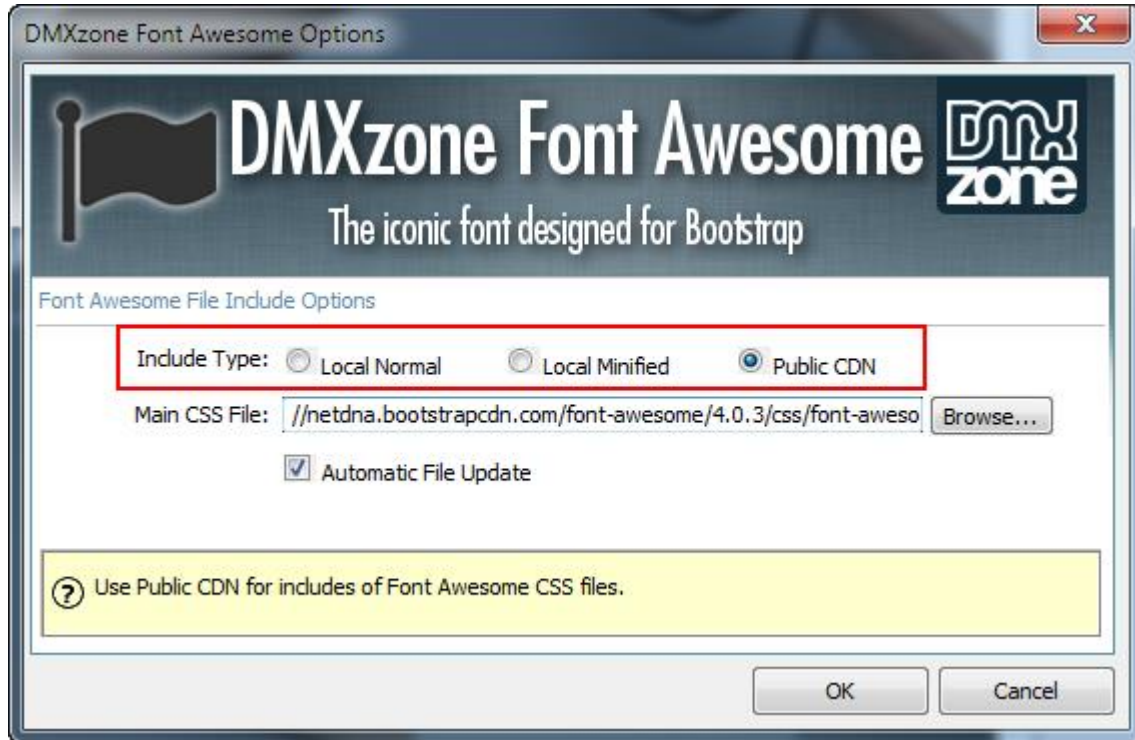
- **Sortable by category** - You can sort the icons by different categories: all icons, web application icons, form control icons, currency icons, text editor icons, directional icons, video player icons, brand icons and also medical icons.



- **Toggle icon filter** - Toggles show only the desired types, outlines, circle and/or square icons.



- **DMXzone Font Awesome options command** - You can choose how to include font awesome on your pages; normal, minified or even through CDN, so you can achieve the fastest performance for your website.



- **Automatic file copy and include** - If you don't like to automatically copy font awesome files and inclusion, you can switch it off!



## **Before you begin**

Make sure to setup your site in Dreamweaver first before creating a page. If you don't know how to do that please [read this](#).

## **Installing the extension**

Read the tutorial at <http://www.dmxzone.com/go/4671/how-to-install-extensions-from-dmxzone/>

Login, download the product, and look up your serial at <http://www.dmxzone.com/user/products>

Get the latest extension manager from Adobe at [http://www.adobe.com/exchange/em\\_download/](http://www.adobe.com/exchange/em_download/)

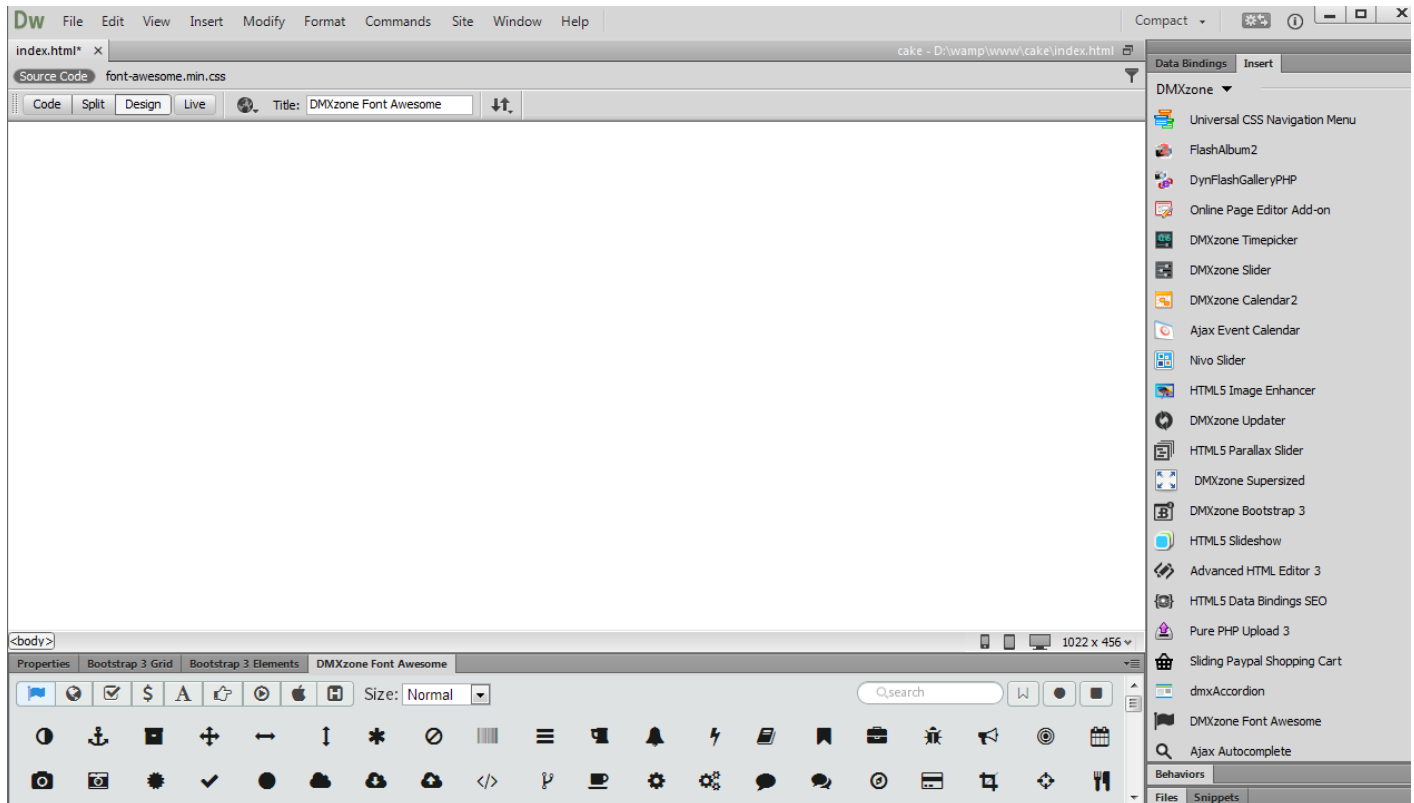
Open the .zxp file if you're using Dreamweaver CC or the .mxd file for Dreamweaver CS+ (the extension manager should start-up) and install the extension.

**If you experience any problems contact our Live Support!**

## The Basics: Insert DMXzone Font Awesome on your Page

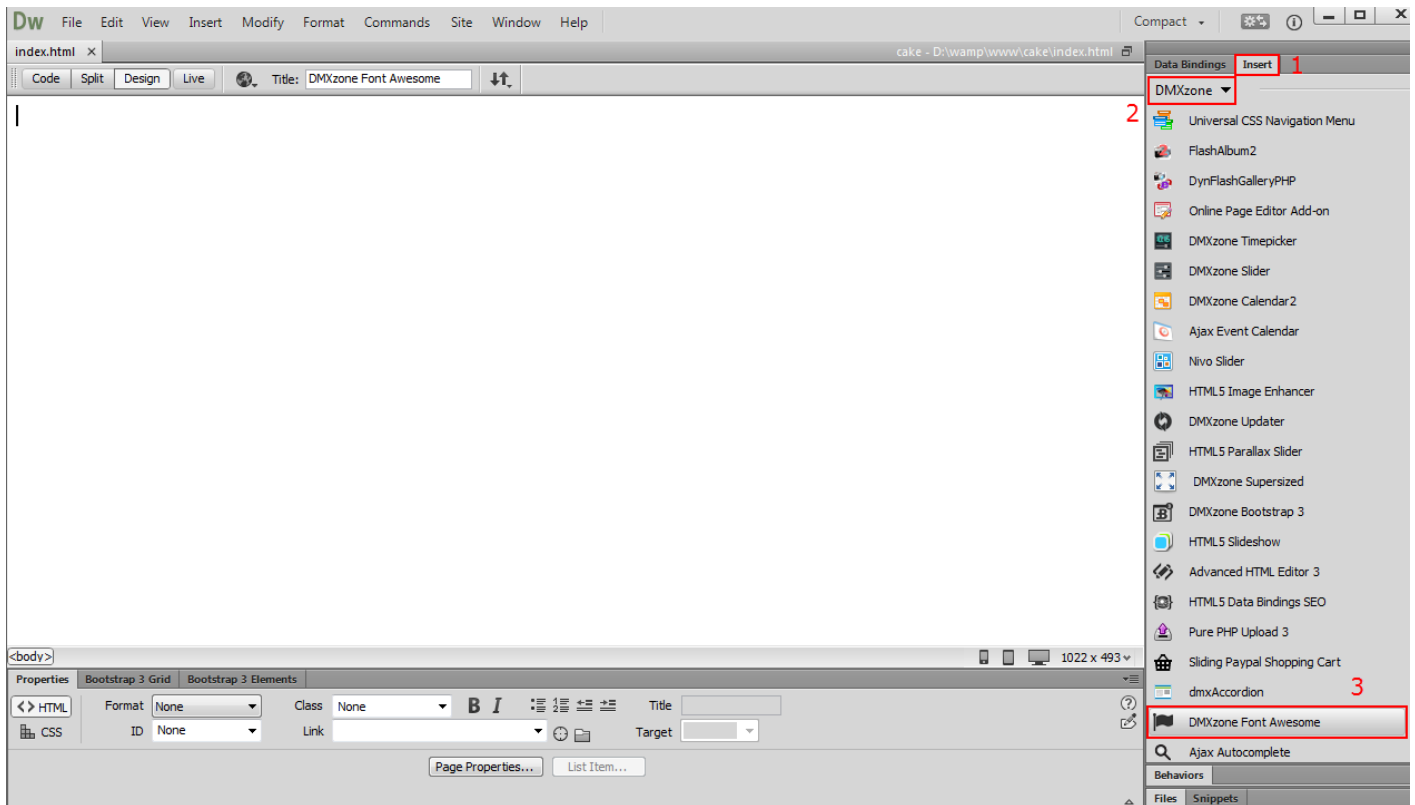
In this tutorial we will show you how to insert DMXzone Font Awesome on your page.

\*You can also check out the **video**.

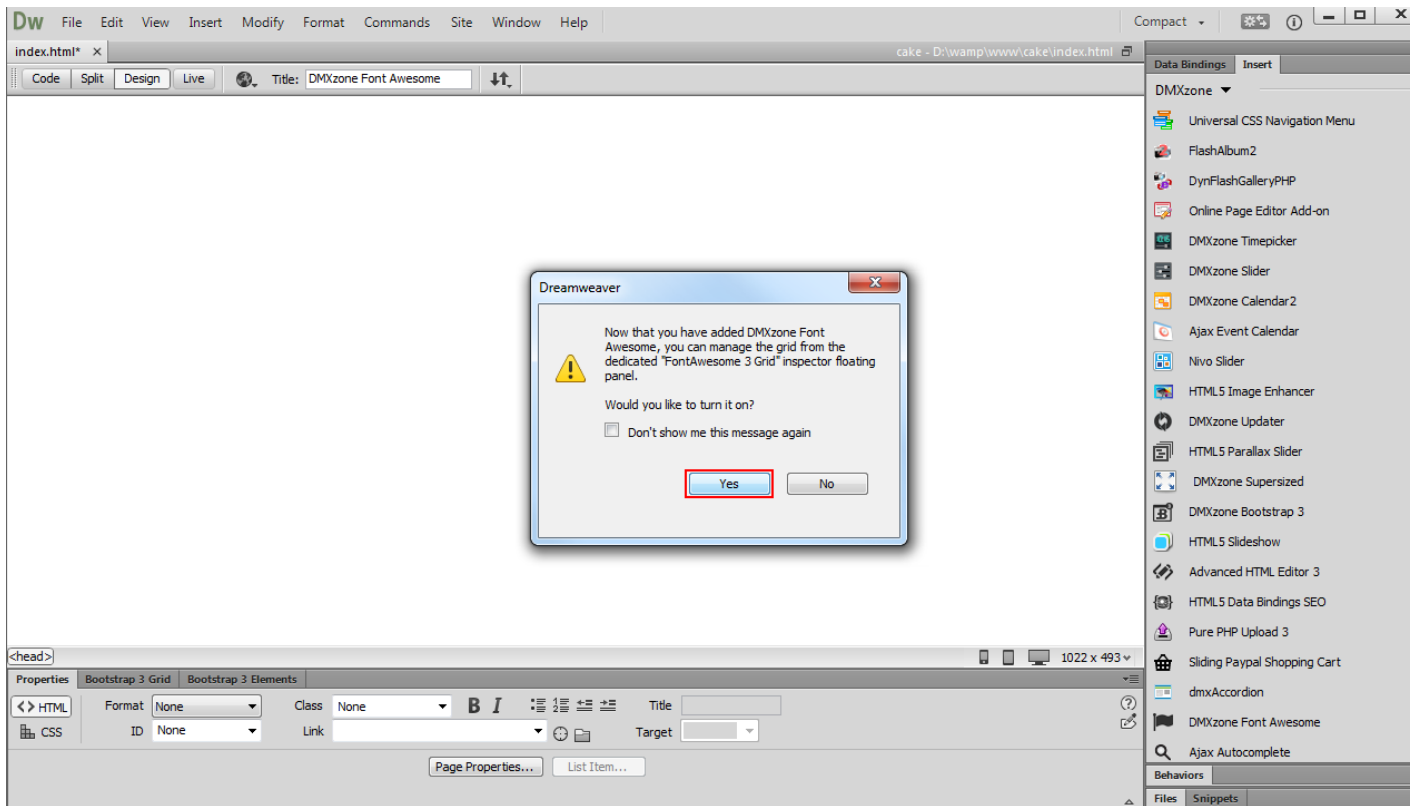


## How to do it

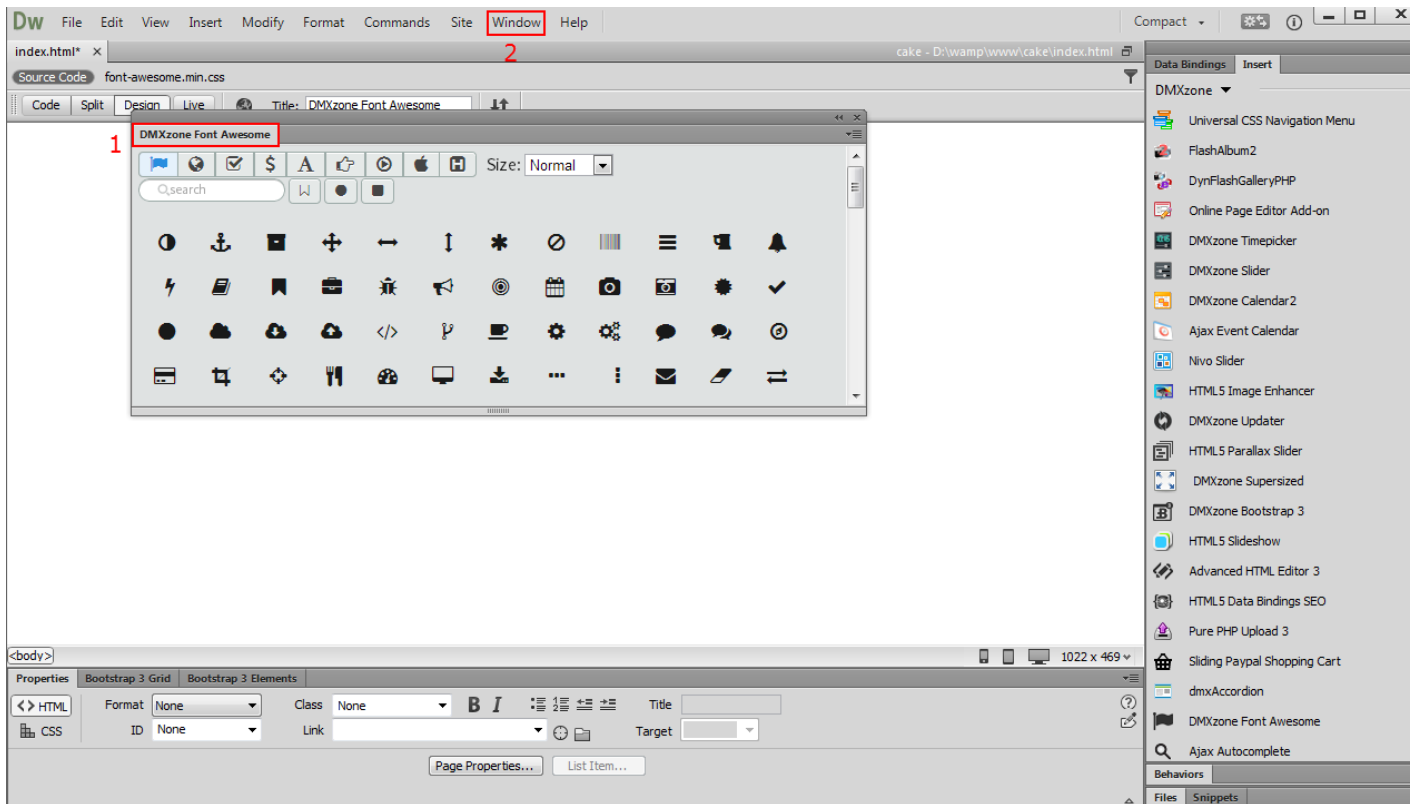
1. Create and open a page in Dreamweaver. From the **insert panel (1)**, select **DMXzone (2)** and click **DMXzone Font Awesome (3)**.



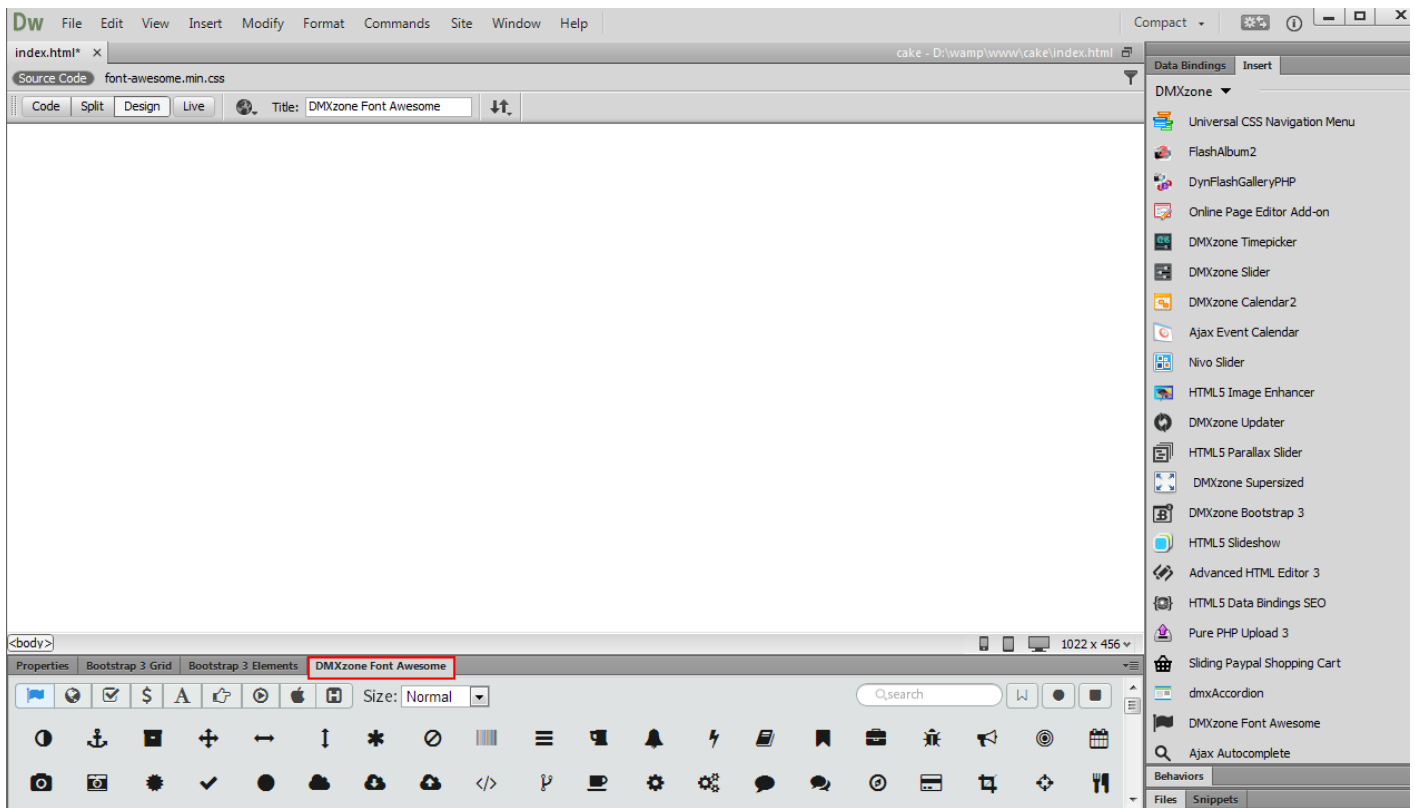
2. A Dreamweaver window asking you to enable the **DMXzone Font Awesome** floating panel appears. Click the **yes button**.



3. You can **drag and pin** the floating panel to any side of your Dreamweaver window (1). The **DMXzone Font Awesome** floating panel can be also enabled from the **window top menu** (2).



- We pin the **DMXzone Font Awesome** floating panel to the bottom of the window, next to the Properties Inspector.

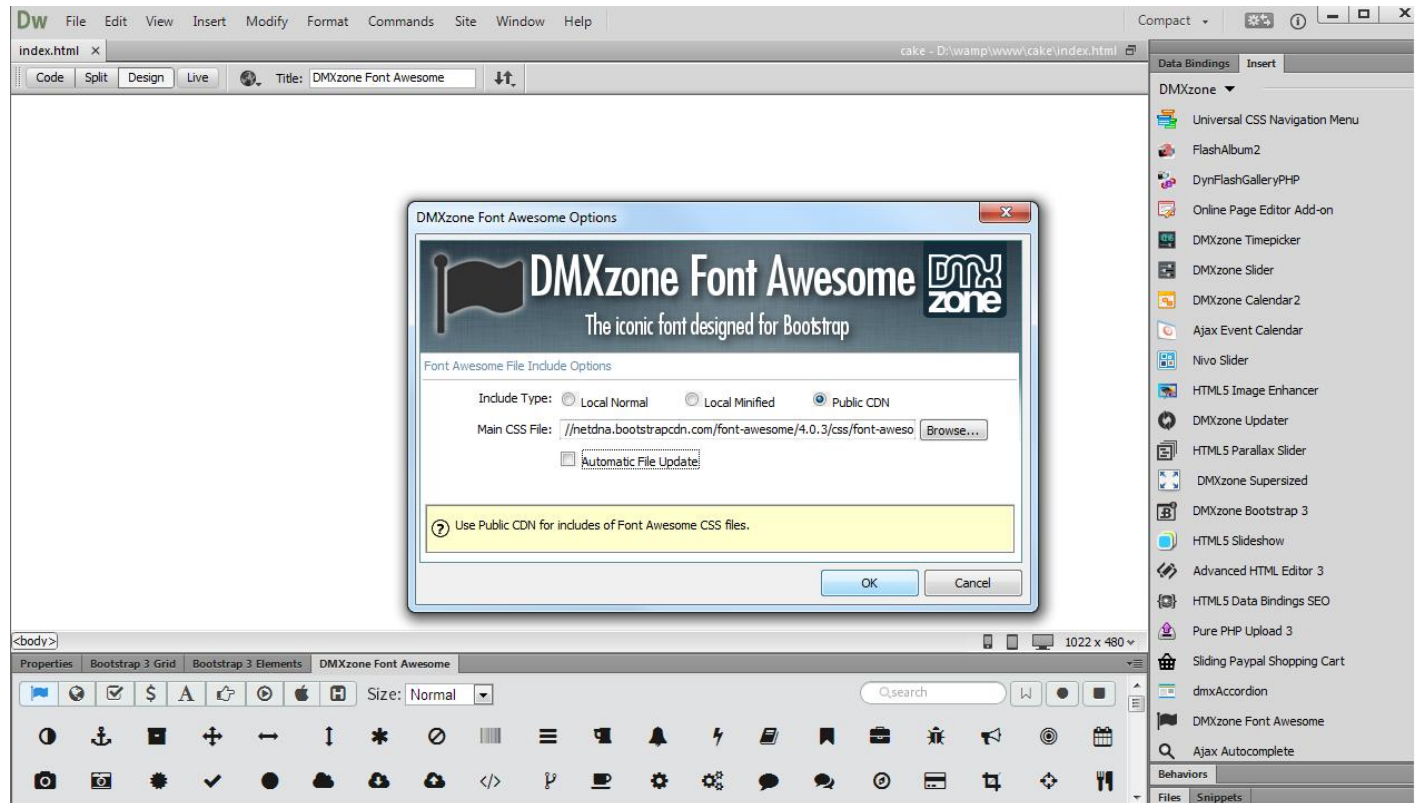




## Advanced: Setup DMXzone Font Awesome Include Options

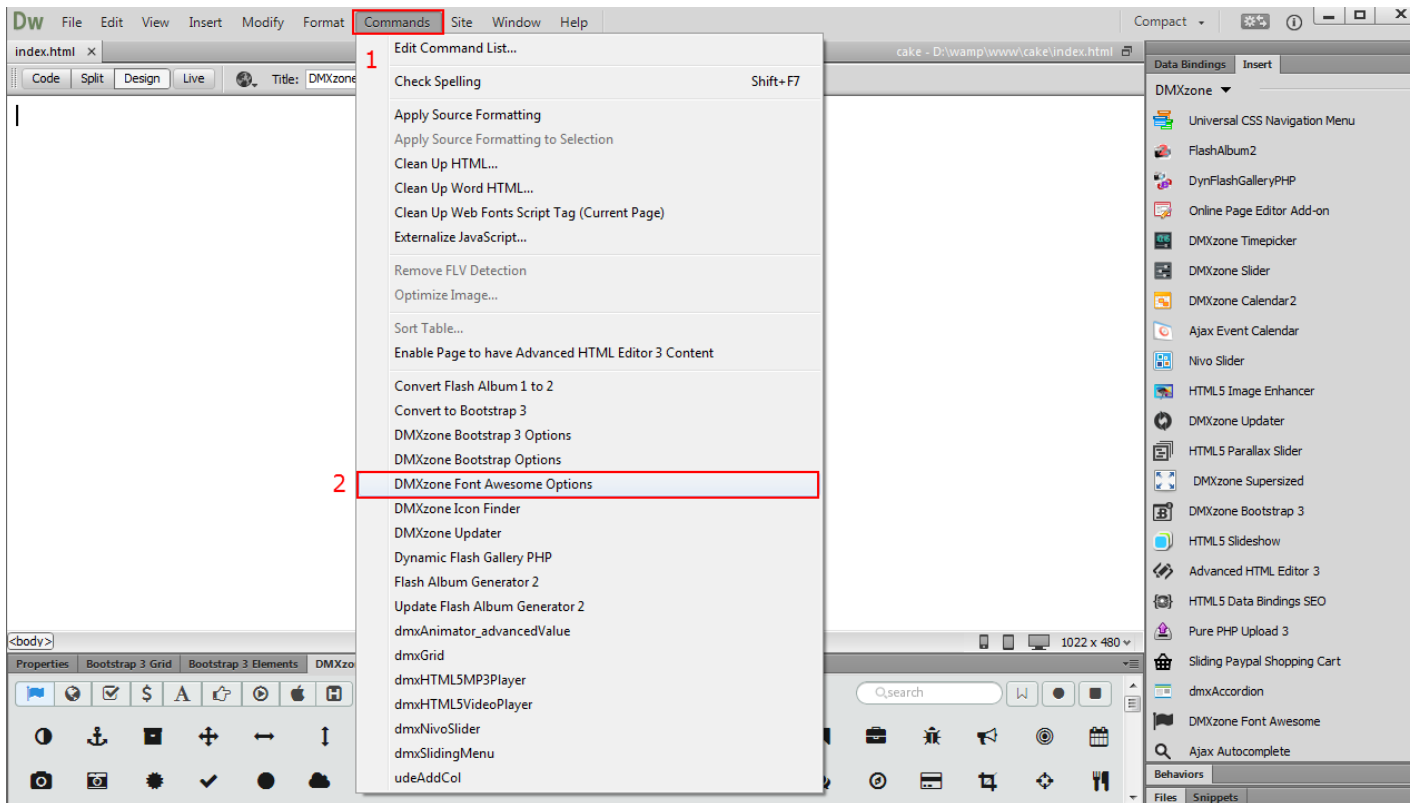
In this tutorial we will show you how to setup the DMXzone Font Awesome include options.

\*You can also check out the **video**.

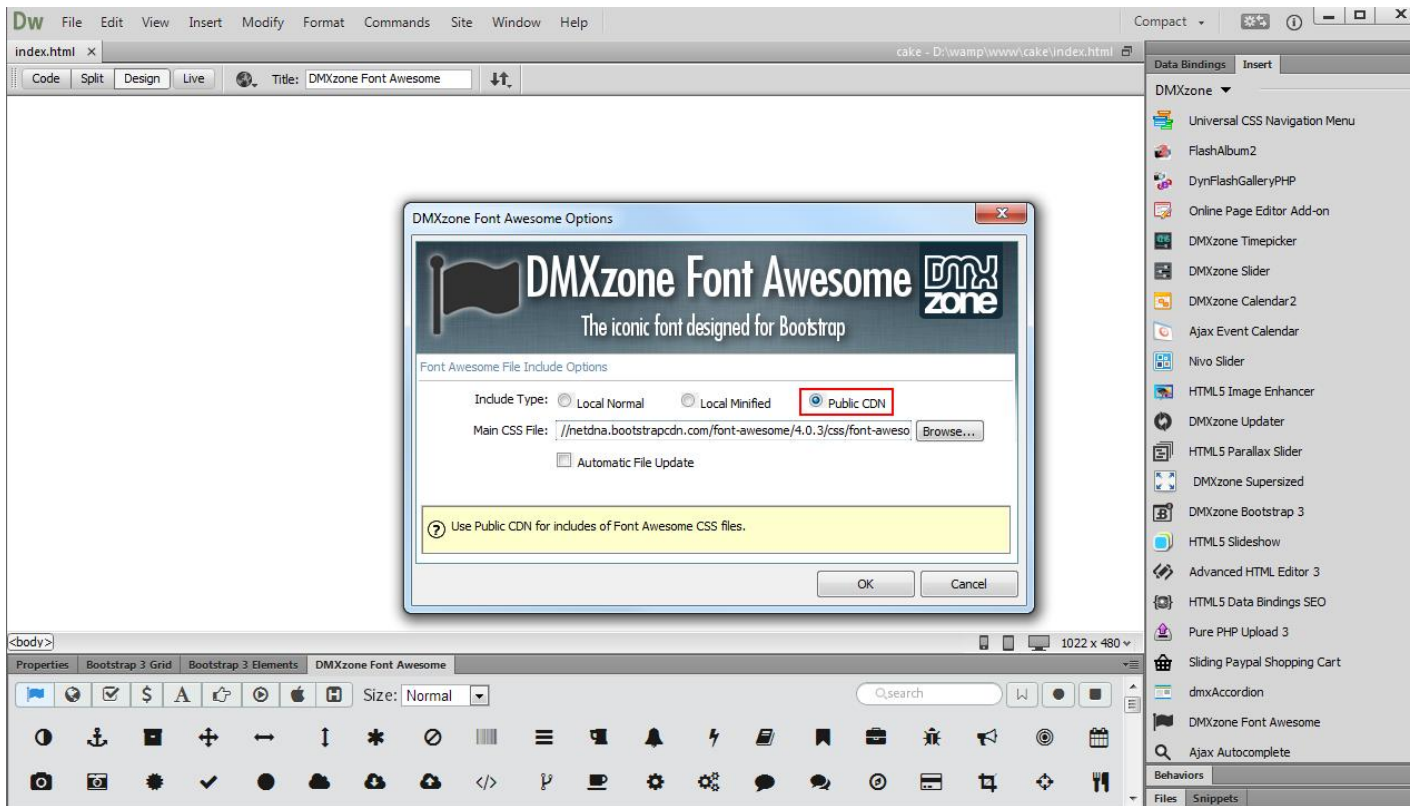


## How to do it

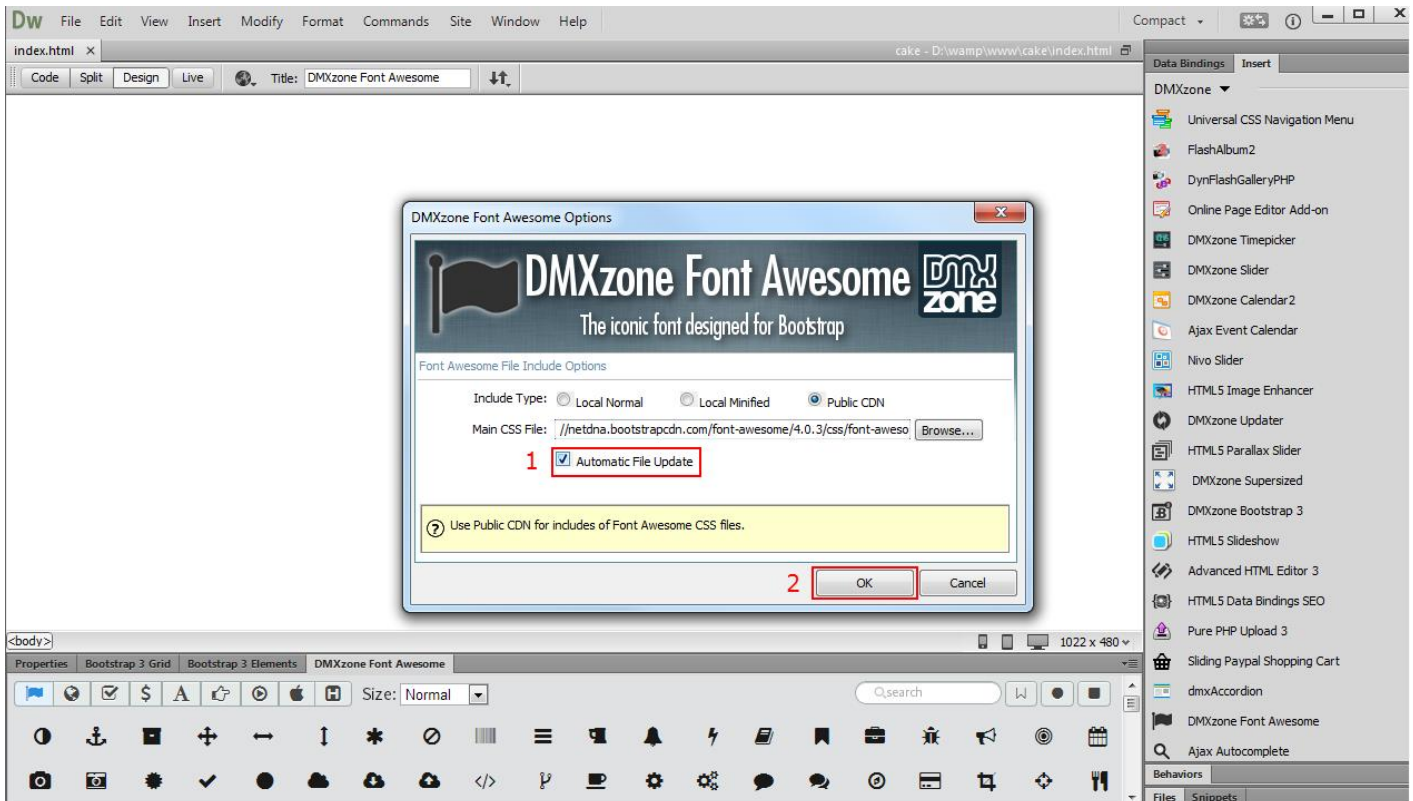
1. From the commands top menu (1) select **DMXzone Font Awesome Options** menu item (2).



2. In the DMXzone Font Awesome Options window, there are three types of include options: Local Normal, Local Minified and Public CDN. We select the **Public CDN include type**.



3. You can enable or disable the **automatic file update** option (1). When the option is enabled it checks if the main CSS file of the font is properly included in the head section of your page(s). If the main CSS file is missing the extension automatically adds it there when the page is being saved. When you're done. Click **OK** (2).



## Video: Insert DMXzone Font Awesome on your Page



With this **movie** we will show you how to insert **DMXzone Font Awesome** on your page.

## Video: Setup DMXzone Font Awesome Include Options



With this **movie** we will show you how to setup the DMXzone Font Awesome include options.

## Video: Insert Icons on your Page Using DMXzone Font Awesome



With this **movie** we will show you how to insert icons on your page using **DMXzone Font Awesome** and the features packed in this extension.