

Table of contents

Table of contents.....	1
About Sliding Panels.....	2
Features in Detail	3
Before you begin	12
The Basics: Creating Simple Sliding Panels	13
Advanced: Dynamic Sliding Panels	20
Reference: Sliding Panels Designs	27
Video: Creating Simple Sliding Panels	30
Video: Creating Dynamic Sliding Panels	30



About Sliding Panels

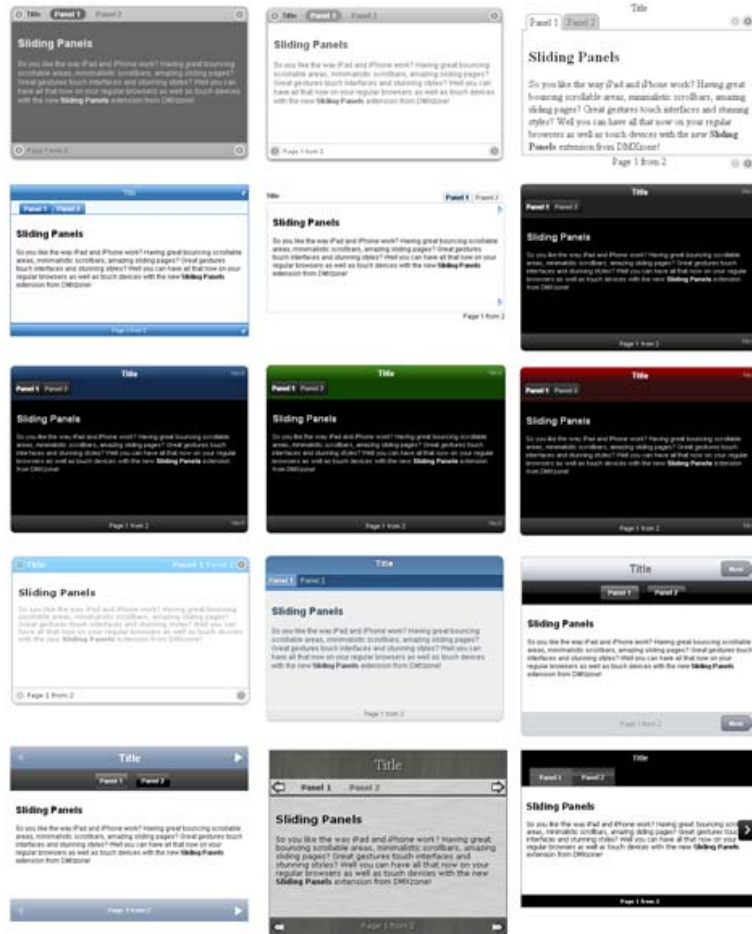
So you like the way iPad and iPhone work? Having great bouncing scrollable areas, minimalistic scrollbars, amazing sliding pages? Great gestures touch interfaces and stunning styles? Well you can have all that now on your regular browsers as well as touch devices with the new Sliding Panels extension from DMXzone!

Based on CSS and jQuery – fully cross browser, this extension offers support for native gestures on touch devices as well mouse gestures on regular browsers! Now you can scroll by swiping with your mouse on your browser or finger when using an iPad, iPhone or other touch device!

Divide your content in great looking pages that can be naturally slid left or right, with cool navigation and displayed in 15 styles! Every content page is fully visually editable in Dreamweaver so you can put any content in it!

Features in Detail


- **15 stylish CSS Designs Included** - Various styles to fit your web site perfectly
 - **Lightweight CSS3 Designs** - We have chosen to use CSS3 effects like rounded corners and shadows in our CSS designs to make them really pure CSS and very light - so no extra images for many weird css hacks are loaded




- **Amazing Sideward Scrolling Effect** - You can scroll by swiping with your mouse on your browser or finger touch and swipe when using an iPad, iPhone or other touch device.
- **Full Support for Gestures and Page Scrolling** - You can turn on/off the bouncing scrollable areas and the gestures that allow you to scroll by swiping with your mouse on your browser or finger when using an iPad, iPhone or other touch device

Butterfly Families

In the Tropics
North America
Around the World




Approximately 275 species are found in North America, many of which are found only in Arizona and Texas. Most skippers are small to medium, usually orange, brown, black, white, or gray. A few have iridescent colors. Skippers have large eyes, short antennae (often with hooked clubs), and stout bodies. Their flight is often rapid, making wing movement appear blurred. Adults of most species have long proboscises and feed on floral nectar, but some also take up nutrients from bird droppings.



White and Sulfur Family (Pieridae)

Members of this family are worldwide in distribution, but most species are found in the tropics. Adults have medium to small wings that are white, yellow, or orange, with some black or red, and many have hidden ultraviolet patterns that are used in courtship. Species with more than one generation usually have distinct seasonal variation in appearance. Adults of all species visit flowers for nectar, and adults of both sexes have three pairs of walking legs. The majority of caterpillars of North American whites and sulphurs feed on legumes or crucifers (members of the Mustard family). Typically, temperate species overwinter in the pupal or larval stage, while tropical species overwinter as adults.

Page 1 from 3

Next

- **Scrollbar appearance** - Integrated fancy on demand scrollbar for each Sliding Panels design.

header

Go iCompatible
Translate Released
Creative Suite 5



Today, we're excited to announce that we have our first iPad compatible DW extension - the Sliding Billboard! Now you can use gestures to fully navigate your Sliding Billboard with touch on the iPad or iPhone and with mouse sweeps on the regular computers. You can enable or disable this functionality with the new "Gestures" option on the Property Inspector.

Check out the demo and stay tuned for more DMXzone Extensions updates for iPad compatibility and touch enhancements.

Sliding Billboard iPad Gestures Demo

Use mouse to simulate iPad touchscreen gestures (click and drag) to control the Sliding Billboard.



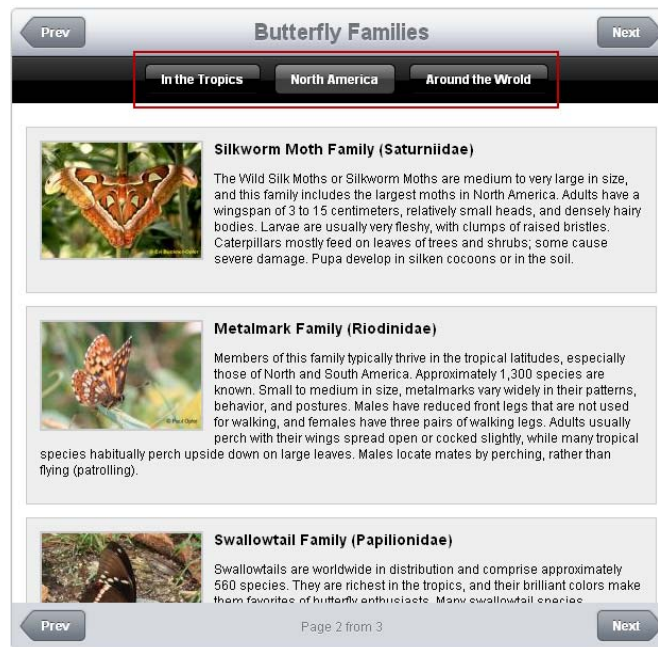
Go iCompatible
Translate Released
Creative Suite 5

Page 1 from 3
Next

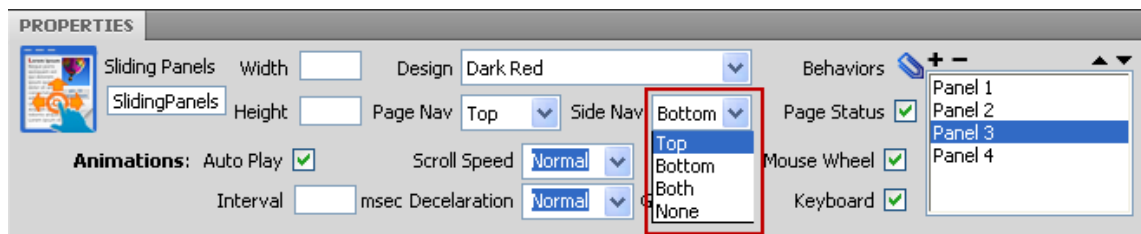
- **Customizable animation** - Adjust the Panels appearance by speed, deceleration and interval



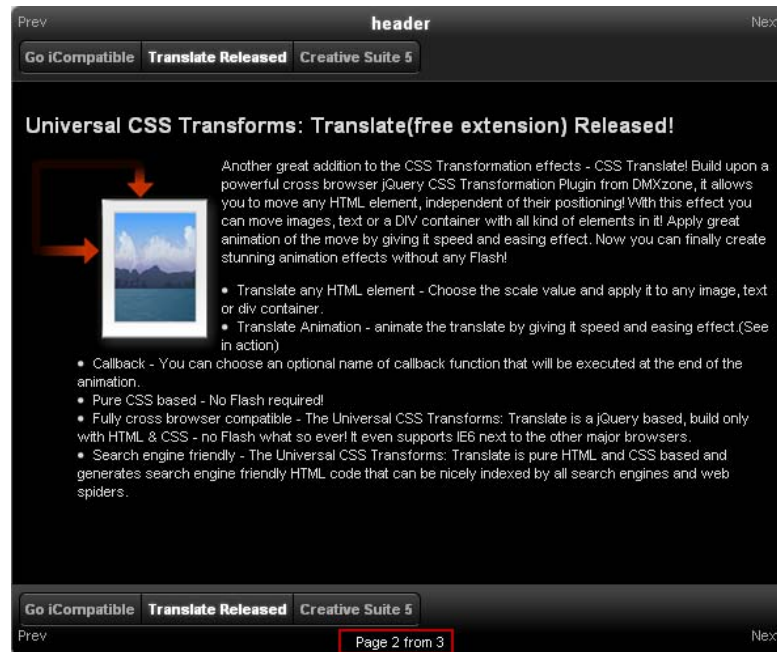
- **Organize in Panels** - Divide your content for a better preview
 - **Multiple Panels** - Divide your content in multiple panels and have a great tabs/menu like navigation between the sections



- **Side Navigation buttons** - You can also choose if you want to have side navigation arrow buttons, where should they be positioned top, bottom and on both sides.



- **Auto Paginating** - Quick access to all the pages in the Sliding Panels



- **Show any content** – You can preview any kind of content in your Sliding Panels, such as text, images and videos, even a whole web page.
- **Pure CSS Panels** - Doesn't require any plugins and works on all modern browsers
- **Search Engine Friendly** - as the Sliding Panels is pure HTML and CSS code it can be nicely indexed by all search engines and web spiders



- **Revolutional Dreamweaver integration!** All the panels are live rendered in Dreamweaver and can be fully navigated in design view! So you can easily visual switch from panel to panel and edit it right in place! Note this feature requires Dreamweaver CS3+

Sliding Panels

Prev **Butterfly Families** Next

In the Tropic North America Around the Wrold

Brushfoot Family (Nymphalidae)

Distributed [worldwide](#), butterflies of this family are especially rich in the tropics. There are more species in this family than in any other. Adults vary in size from small to large, and their front legs are reduced, unable to be used for walking. Wing shape varies widely between different species. Browns, oranges, yellows, and blacks are frequent colors, while iridescent colors such as purples and blues are rare. Adults of some groups are the longest-lived butterflies, surviving 6-11 months. Adult feeding behavior depends on the species, where some groups primarily seek flower nectar while others only feed on sap flows, rotting fruit, dung, or animal carcasses.

Skipper Family (Hesperiidae)

Skippers are found worldwide in distribution, with most of the diversity found in the tropics. More than 3,500 species have been described.

<body> <div.dmxSlidingPanels ipad>

100% 761 x 475 1956K / 280 s

PROPERTIES

Sliding Panels Width 620 Design Ipad Behaviors

SlidingPanel: Height 600 Page Nav Top Side Nav Both Page Status

Animations: Auto Play Scroll Speed Normal Bounce Mouse Wheel

Interval msec Deceleration Normal Gestures Keyboard

In the Tropic
North America
Around the Wrold

- **Fully customizable** - Don't like to supply styles? Well it is all CSS based so you can easily make your own adjustments in the CSS from within Dreamweaver's CSS editor

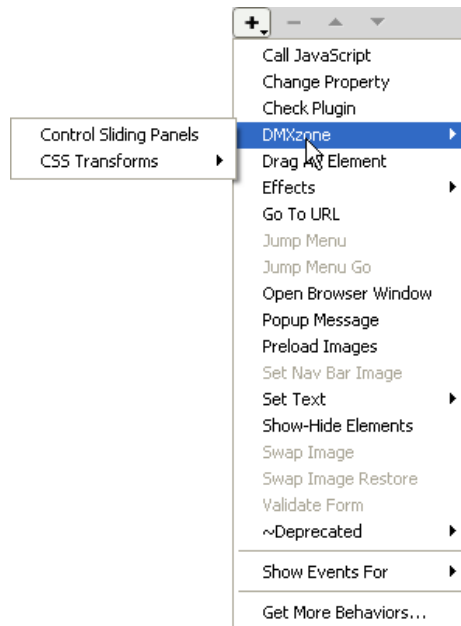

```

index.html* x
Source Code  dmxSlidingPanels.css  iPad.css  apple_inspired_dark.css  apple_inspired_light
Code  Split  Design  Live View  Live Code  Title:

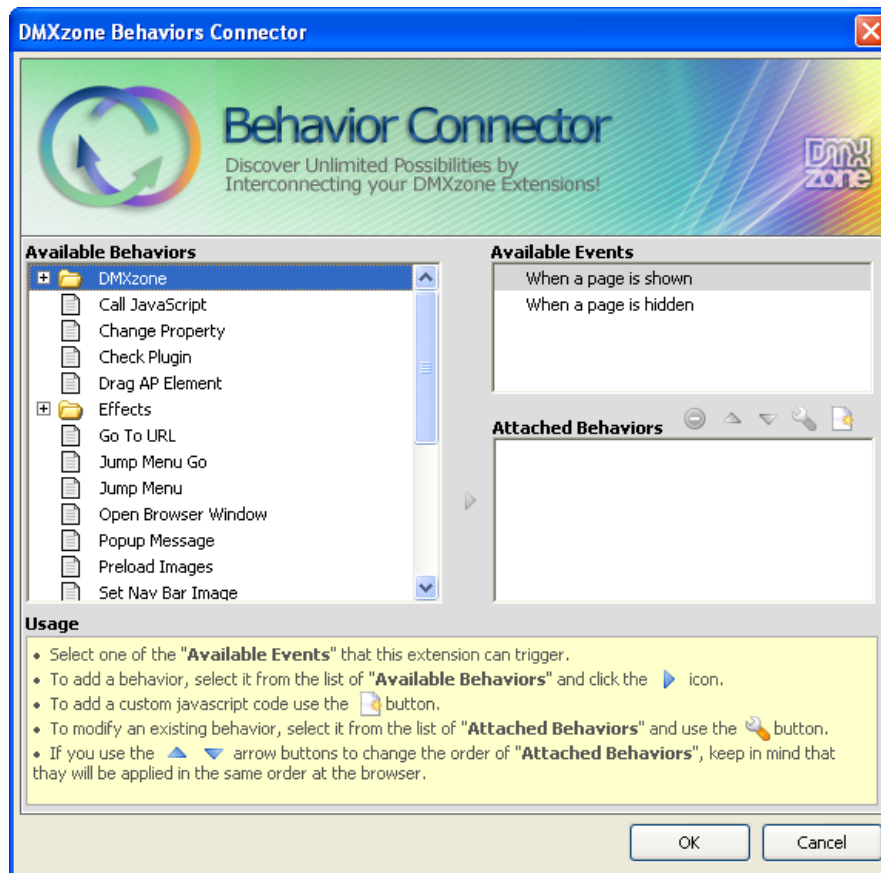
1  /* Sliding Panels iPad Stylesheet */
2
3
4  .dmxSlidingPanels.ipad {
5      font-family: Helvetica, Arial, sans-serif;
6      font-size: 12px;
7      color: #000;
8      -webkit-text-size-adjust: none;
9      -webkit-border-radius: 5px;
10     -moz-border-radius: 5px;
11     -moz-box-shadow: 0 0 3px #555;
12 }
13
14 .dmxSlidingPanels.ipad .dmxSlidingPanelsHeader {
15     position: relative;
16     min-height: 44px;
17     background: url('header.png') top repeat-x;
18     -webkit-border-top-left-radius: 5px;
19     -webkit-border-top-right-radius: 5px;
20     -moz-border-radius-topleft: 5px;
21     -moz-border-radius-topright: 5px;
22     border-top-left-radius: 5px;
23     border-top-right-radius: 5px;
24 }
25
26 .dmxSlidingPanels.ipad .dmxSlidingPanelsFooter {
27     position: relative;
28     min-height: 44px;
29     background-color: #d5d8de;
30     -webkit-border-bottom-left-radius: 5px;
31     -webkit-border-bottom-right-radius: 5px;
32     -moz-border-radius-bottomleft: 5px;
33     -moz-border-radius-bottomright: 5px;
34     border-bottom-left-radius: 5px;
35     border-bottom-right-radius: 5px;

```

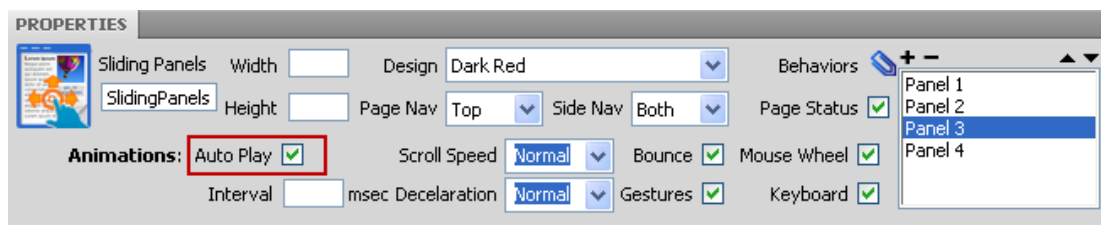
- **Fully Controllable by behaviors** - You want to navigate to specific position, start or stop the Panel - it can be easily done with the Control Sliding Panels behavior.



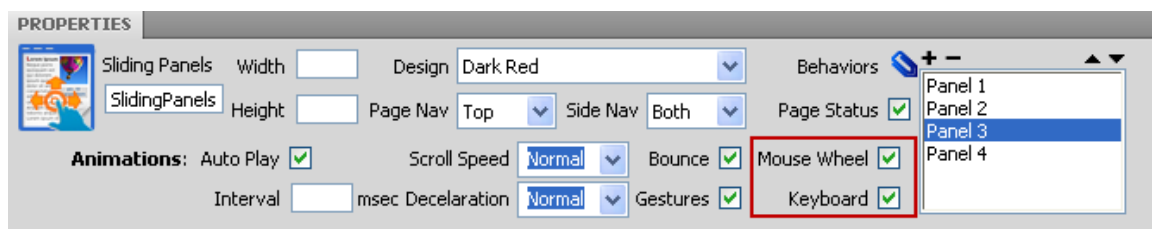
- **Full Support for the DMXzone Behavior Connector** - You can easily bind other DMXzone extensions like [DMXzone Lightbox](#), [Advanced Layer Popup](#) and [Advanced Tooltips](#) to your slides.



- **Need auto sliding** – Well, just do set the Auto Play - and then the user will navigate manually only



- **Full support for keyboard and mouse wheel navigation (optional)**



- **Inline property inspector** - You can easily change visual options later on.

PROPERTIES

Sliding Panels Width Design **Dark Red** Behaviors

SlidingPanels Height Page Nav **Top** Side Nav **Bottom** Page Status

Animations: Auto Play Scroll Speed **Normal** Bounce Mouse Wheel

Interval msec Deceleration **Normal** Gestures Keyboard

- Panel 1
- Panel 2
- Panel 3**
- Panel 4

Before you begin

Make sure to setup your site in Dreamweaver first before creating a page. If you don't know how to do that please [read this](#).

Installing the extension

Read the tutorial at <http://www.dmxzone.com/go?4671>

Login, download the product, and look up your serial at <http://www.dmxzone.com/myZone/purchases>

Get the latest extension manager from Adobe at http://www.adobe.com/exchange/em_download/

Open the .mxp file (the extension manager should start-up) and install the extension.


If you experience problems contact our Live Support!

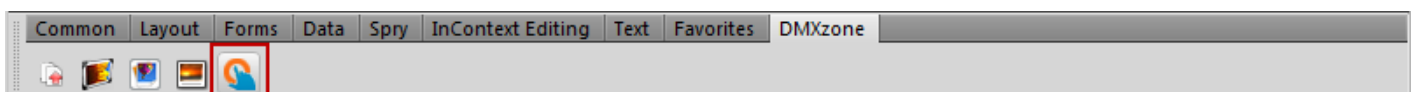
The Basics: Creating Simple Sliding Panels

In this tutorial we will show you how to create simple panels with the help of **Sliding Panels** extension.
*You can also check out the [video](#).

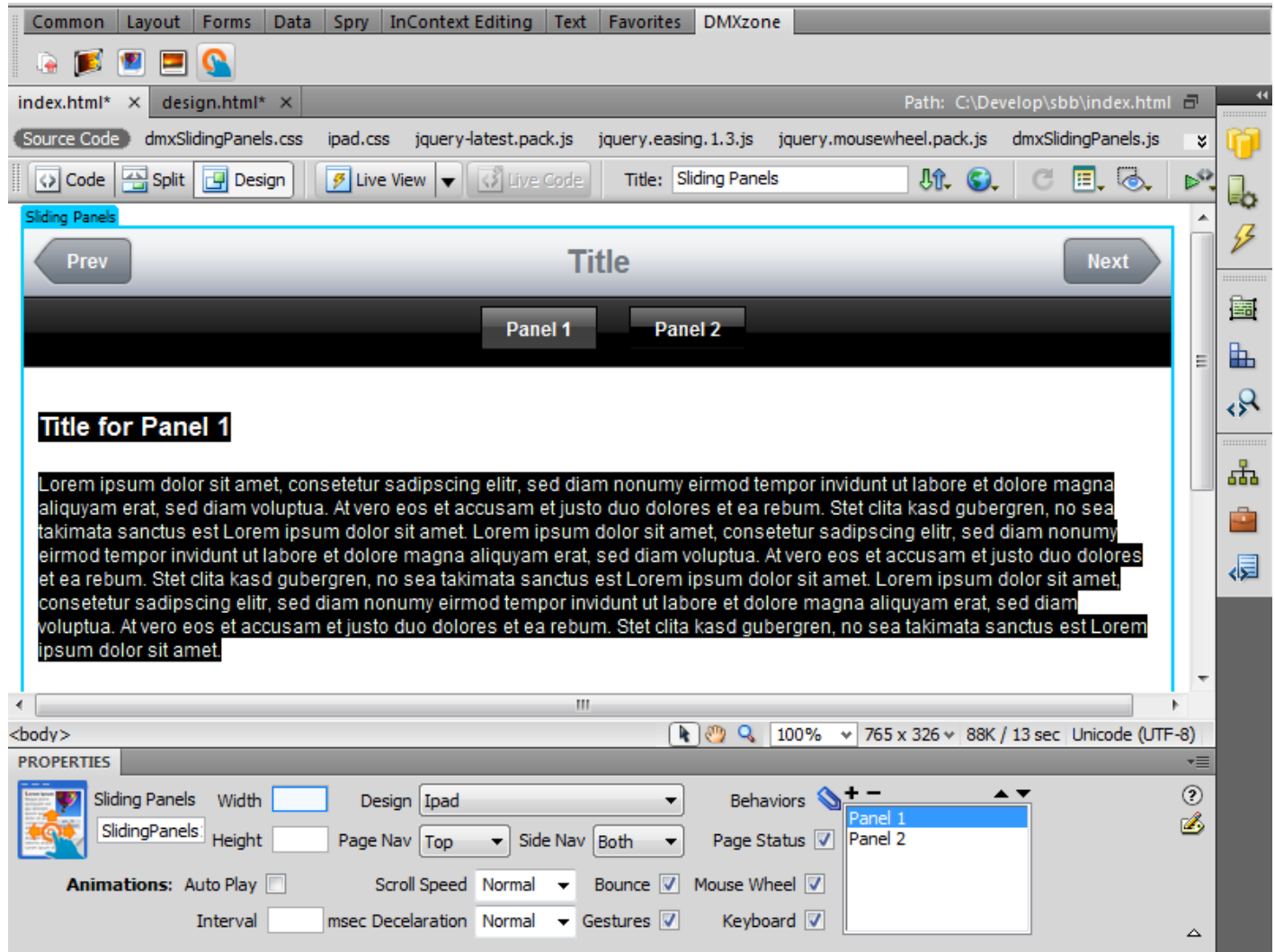


How to do it

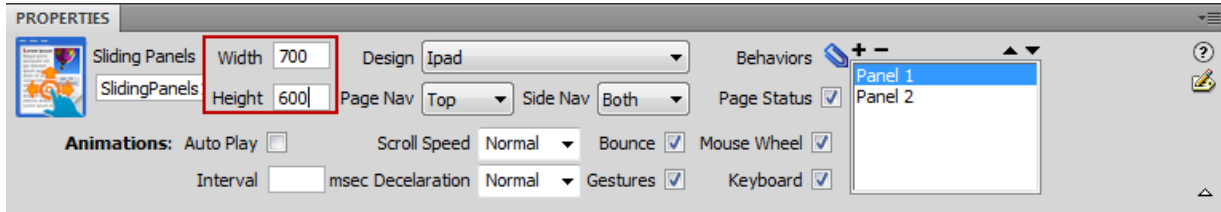
1. Define your site in Dreamweaver and create a new page.
2. **Applying the extension** – Choose the  icon from the DMXzone object bar to apply the extension.



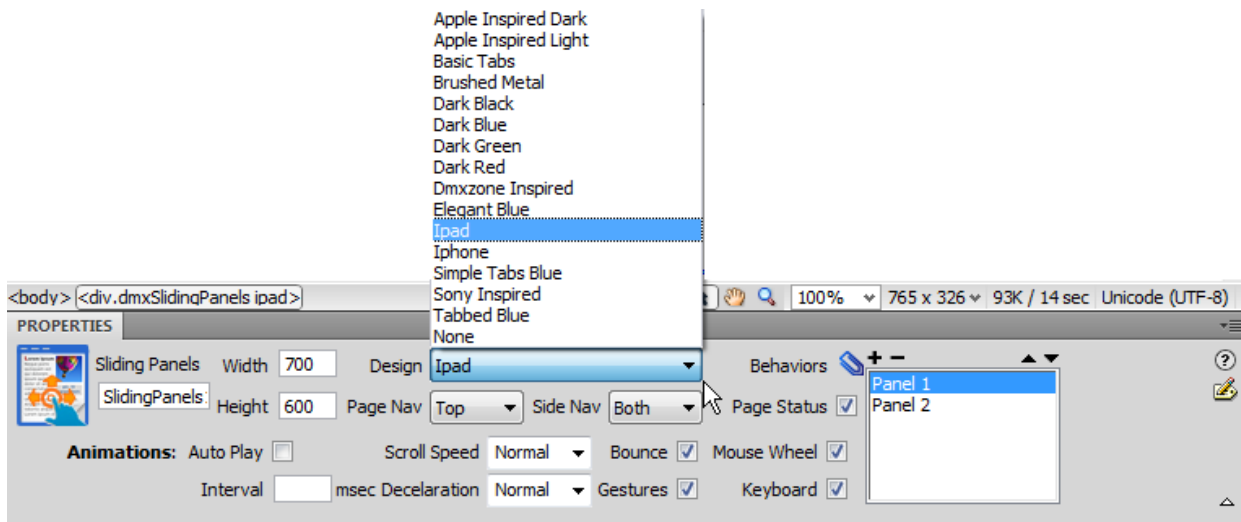
The **Sliding Panels** are now inserted in your page with two default panels and text. You can edit the design in the panels or copy/paste an already designed page in it. For our tutorial we will use a page that we've already designed.



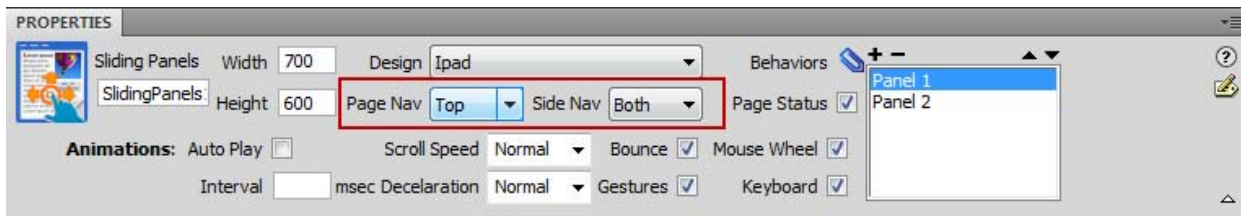
3. **Setting Width and Height** – From the **property inspector** set the size of your panels in pixels (in our case 700px x 600px). You can also set it percents; if you set 100% the size of the panels will match the browser size.

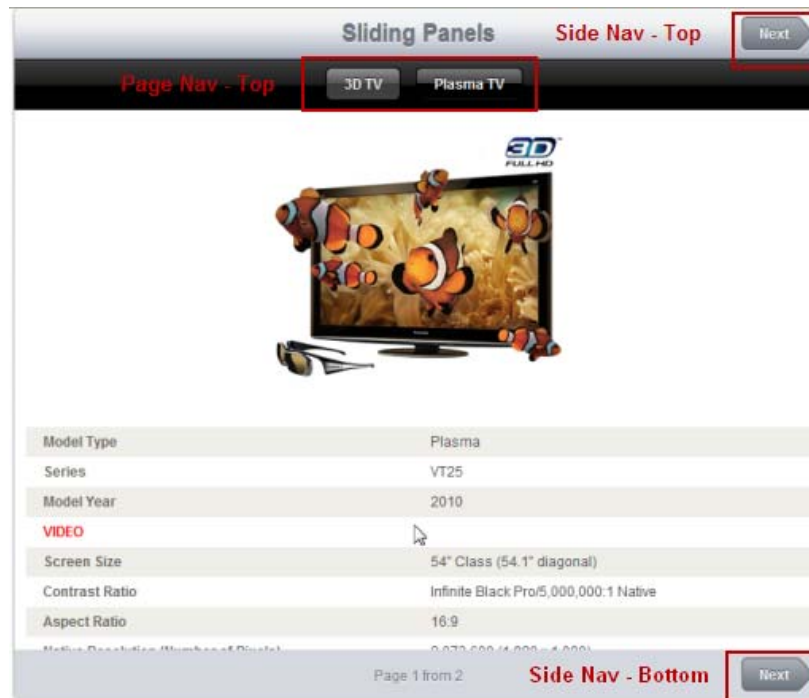


4. **Choosing design** – You can choose one of the **15 CSS Designs** packed in the extension. For our panels we will use the iPad Design.

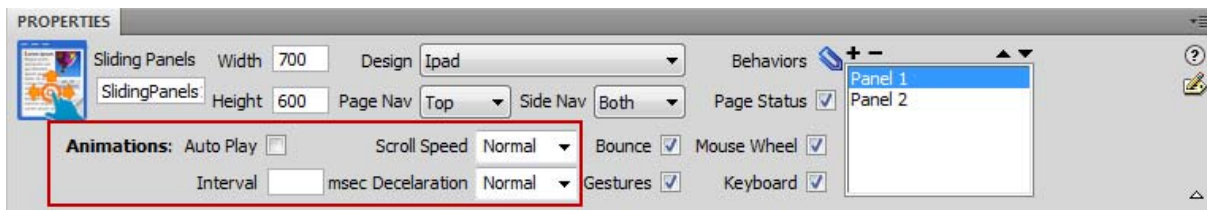


5. **Page and Side Navigation (Top, Bottom, both)** - We choose **Page Nav** – Top and **Side Nav** – Both positions.

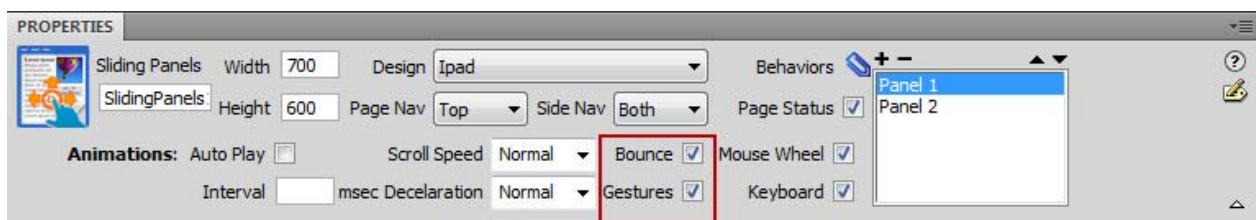




6. **Adjusting the animation settings - Auto Play, Scroll speed, Deceleration** and Interval (in msec) are also some of the features in the **Sliding Panels** extension. For now, we will use the default ones.

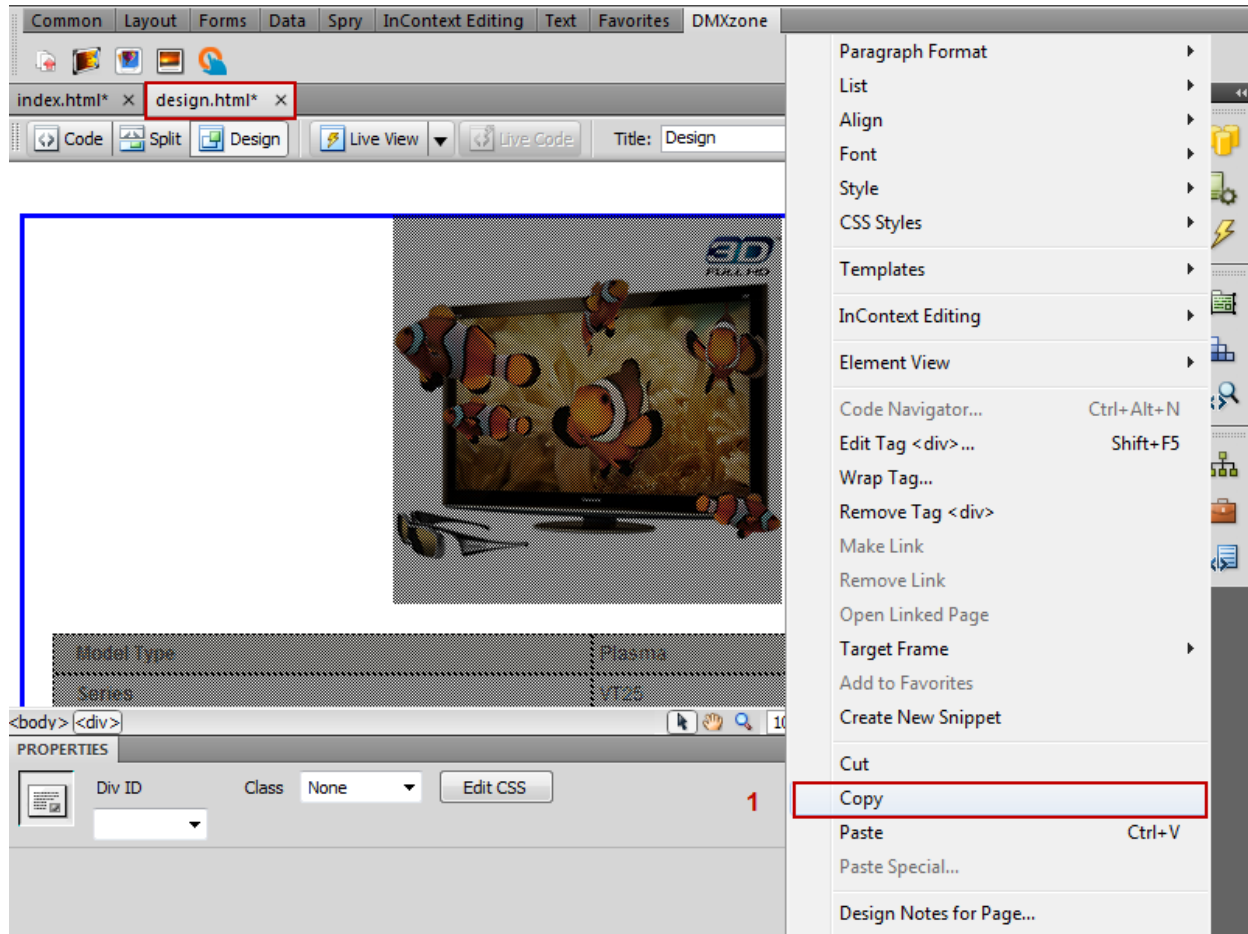


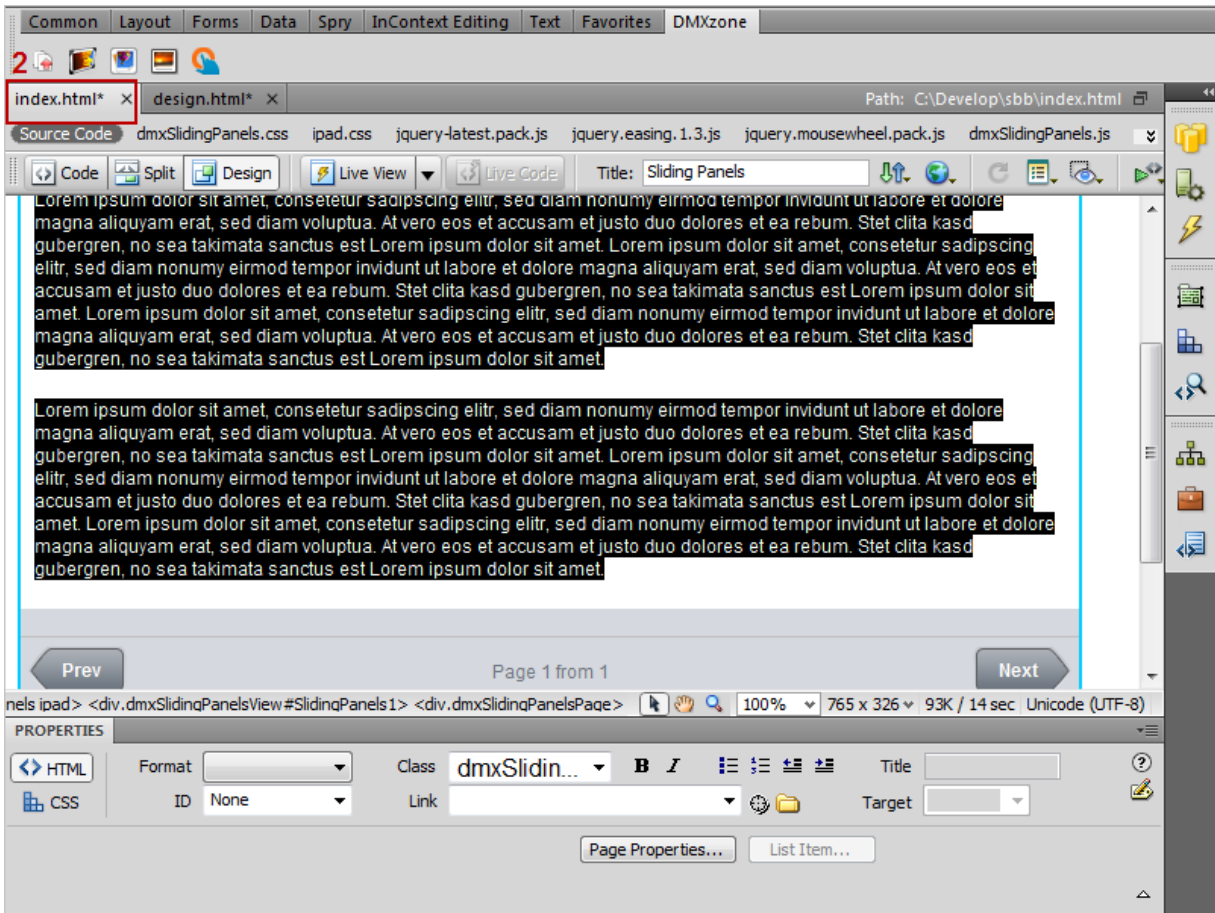
7. **Bounce Effect and Gestures** - We've selected the **Bounce** effect in order to implement a bouncing motion to our page of content. Also we've checked the **Gestures** feature for great sliding power when viewed on an iPad/iPhone or other touch device!



8. **Inserting the designed layout in the Sliding Panels** – We copy our layout (1), select the default text and paste the layout within the **Sliding Panels** (2).

*You can always edit directly in the **Sliding Panels** without creating a new page with a designed layout.





9. **Editing Panels name** – Click on the **panel** in order to change its name.

The screenshot displays the Adobe Dreamweaver interface. At the top, the menu bar includes 'Common', 'Layout', 'Forms', 'Data', 'Spry', 'InContext Editing', 'Text', and 'Favorites'. The title bar shows 'DMXzone'. The browser window displays 'index.html*' and 'design.html*' with the path 'C:\Develop\sbb\index.html'. The source code panel shows files like 'dmxSlidingPanels.css', 'ipad.css', and 'jquery-latest.pack.js'. The main workspace shows a 'Sliding Panels' interface with a header containing 'Prev' and 'Next' buttons, and a navigation bar with '3D TV' and 'Panel 2' buttons. A properties panel is open over the 'Panel 2' button, showing the following details:

- ID:
- Class: dmxSlidingPanels ipad
- Tag: div
- Float:
- Position:
- Top:
- Right:
- Bottom:
- Left:
- Width: 700px
- Height: 600px
- Overflow: hidden (double-click to edit)

The bottom of the screenshot shows the HTML and CSS property panels. The HTML panel shows the class 'dmxSlidin...' and the CSS panel shows 'ID: None'. The status bar at the bottom indicates 's ipad > <div.dmxSlidingPanelsHeader > <div.dmxSlidingPanelsNav > <a>'. The zoom level is 100% and the page size is 765 x 326 pixels.

Now, save your settings and preview the result in your favourite browser! This is how easily you can create a **Sliding Panels** in Dreamweaver!

Advanced: Dynamic Sliding Panels

In this tutorial we will go through the creation of Sliding Panels that retrieve their content from a database using standard Dreamweaver Recordsets and Repeat Regions.

Movies Review

Next

OSS 117: Lost in Rio Iron Man 2 10 Mountains 10 Years Multiple Sarcasms (2010)



OSS 117: Lost in Rio


Release Date: May 7th, 2010
Starring:
Jean Dujardin
Louise Monot
Rudiger Vogler
Alex Lutz
Reem Kherici
Director: Michel Hazanavicius
Writer: Jean Bruce, Jean-Francois Halin, Michel Hazanavicius
Studio: Music Box Films
Genre: Adventure, Comedy
Official Site: facebook.com/lostinrio, oss117.fr
Runtime: 1 hour 41 minutes

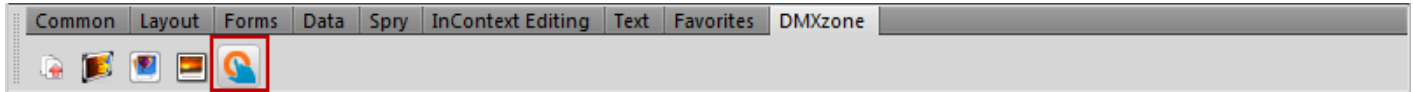
Writer-director Michel Hazanavicius' ("OSS 117- Cairo, Nest of Spies") ultra-stylized spoof follows suave secret agent

Page 1 from 4

Next

How to do it

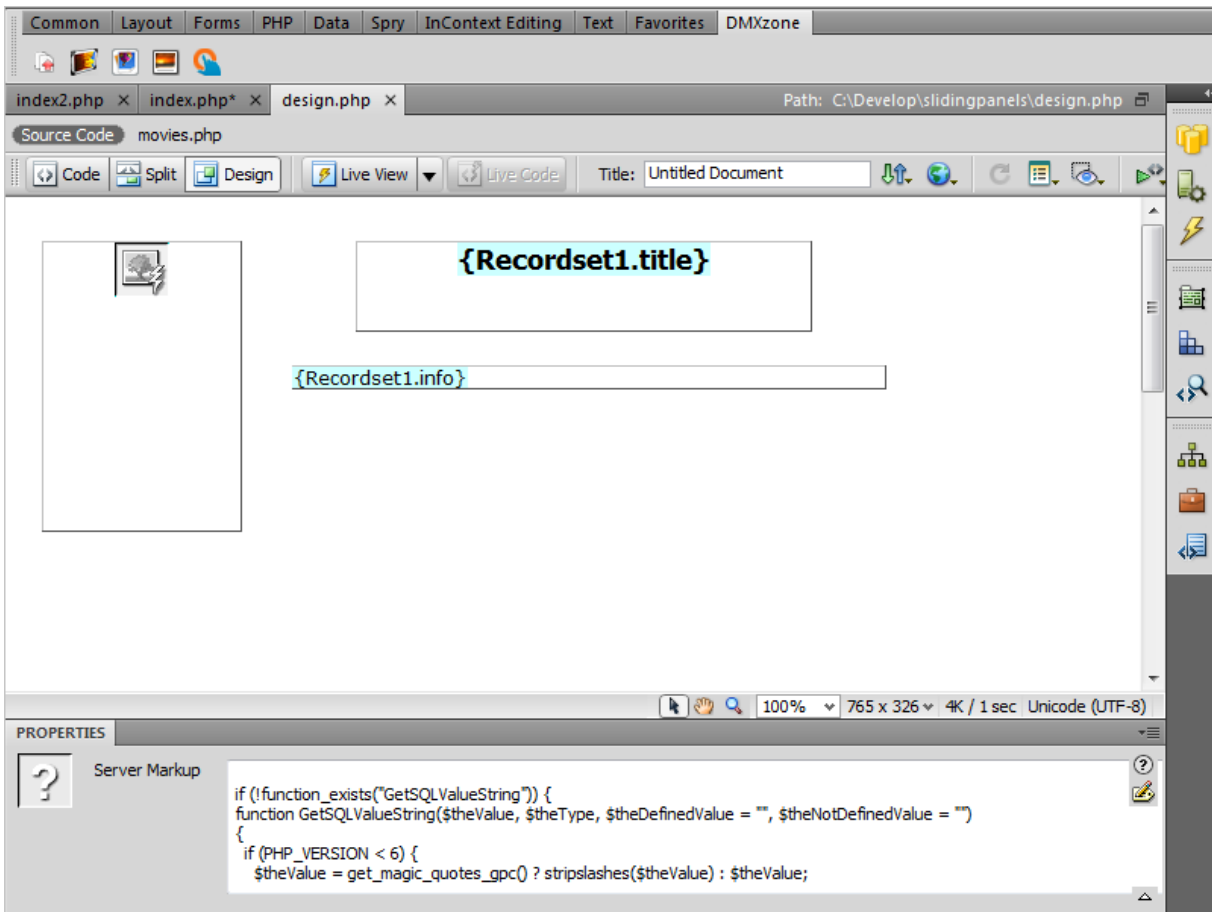
1. Define your site in Dreamweaver and create a new page.
2. **Applying the extension** – Choose the  icon from the DMXzone object bar to apply the extension.



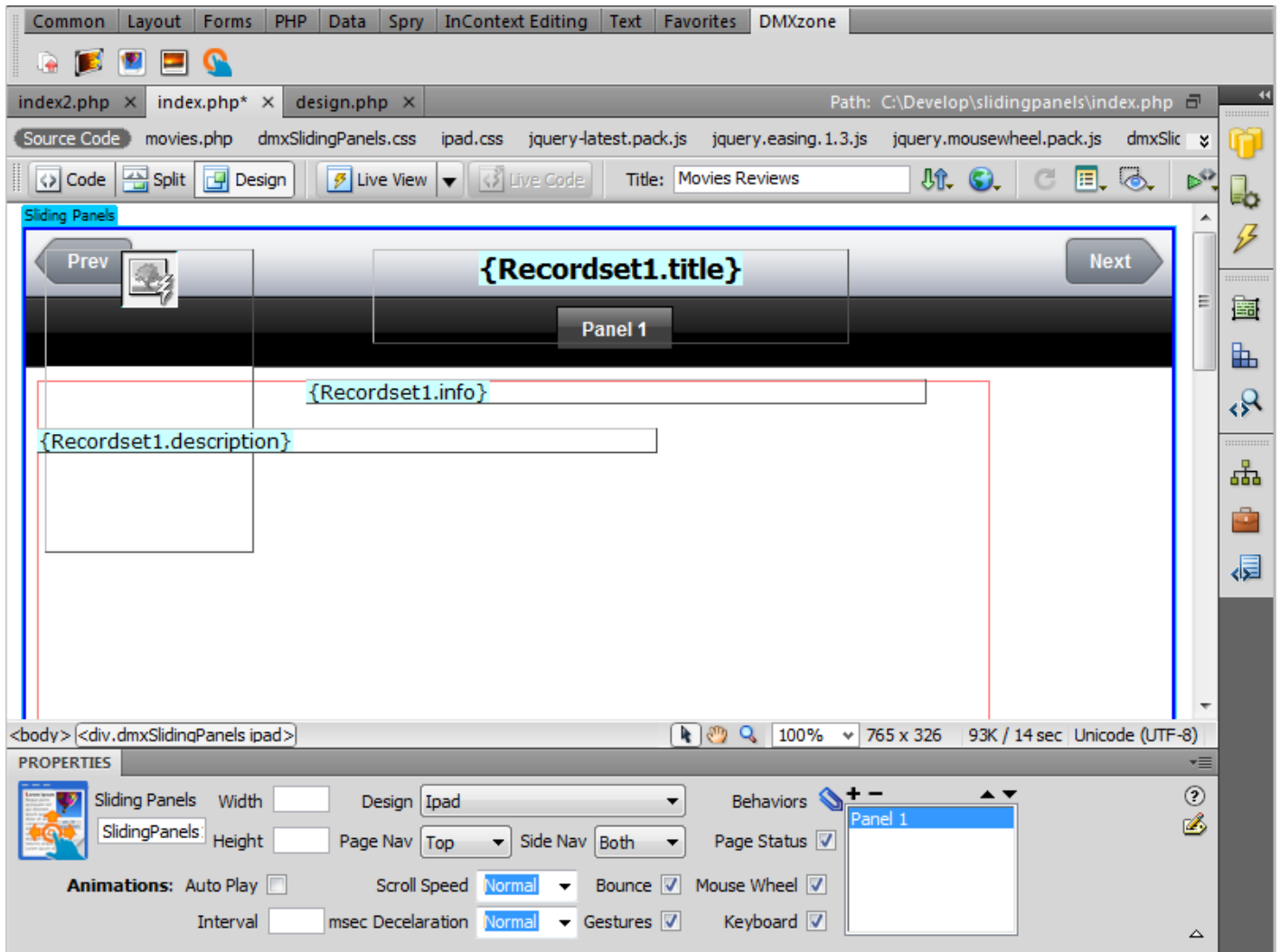
3. **Preparing the Panels for the dynamic content** - By default, the **Sliding Panels extension** inserts some random text and two panels. For our tutorial we need only one panel, so we'll delete the second one – Click the "-" button in order to remove it.

4. **Editing the content** - We've already created a dynamic page and now, we're going to insert it within the **Sliding Panels** page. Copy the dynamic content and paste it in the **Sliding Panels**.

5.

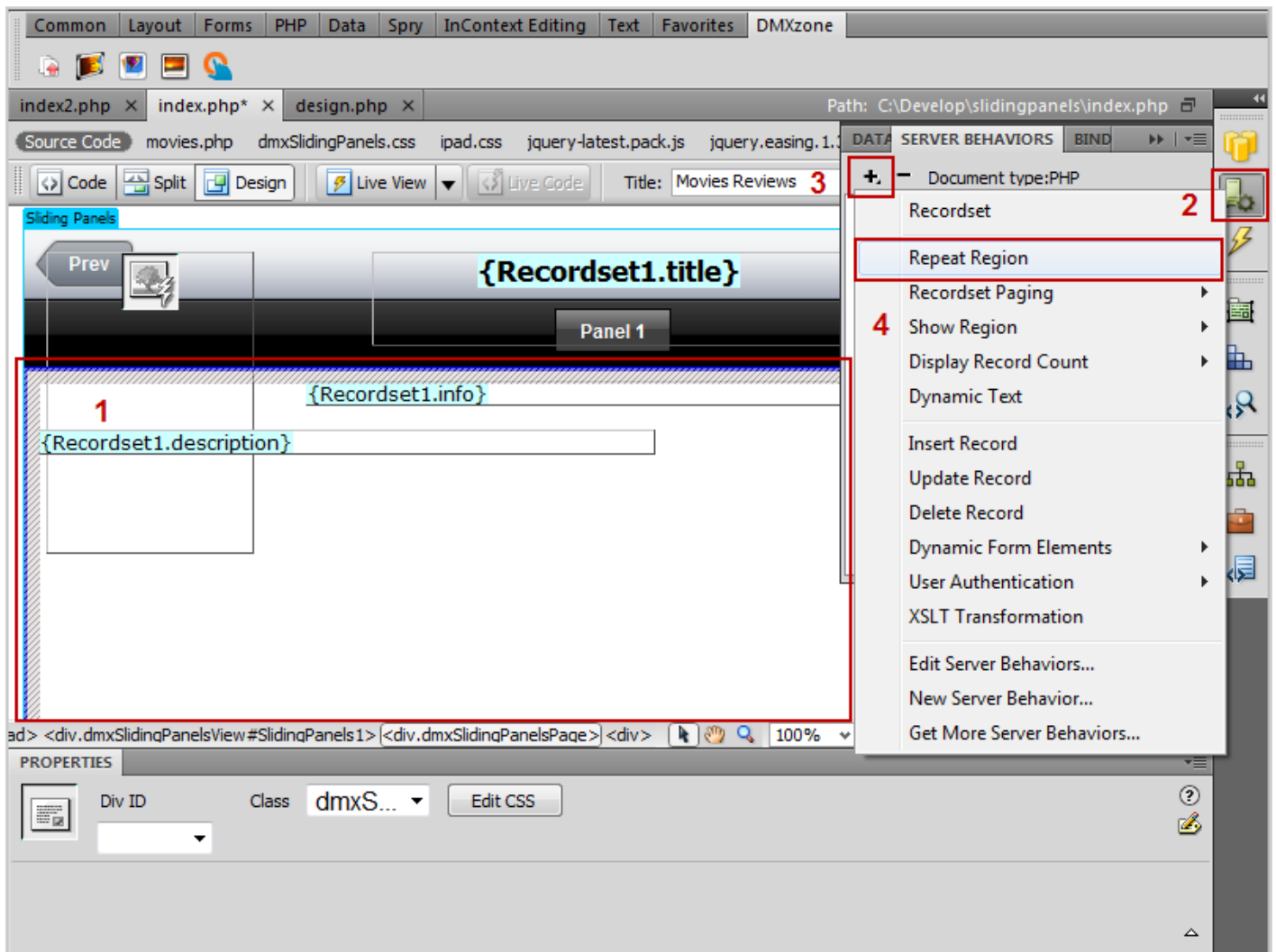


This is how it should look like in your Panels:

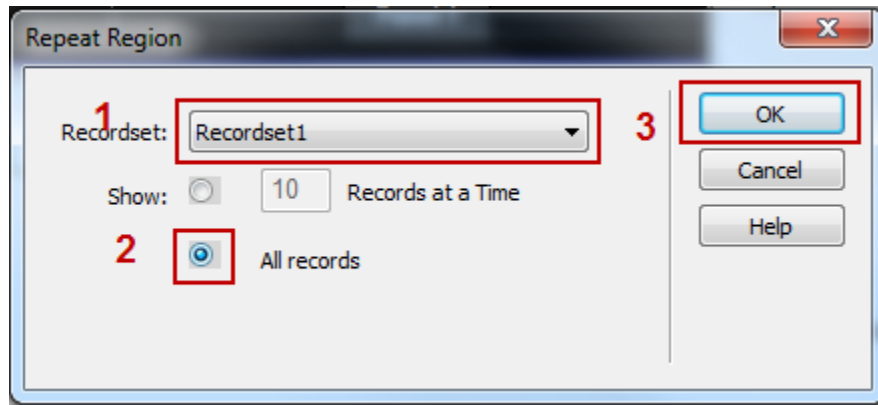


6. **Setting up repeat region** – We’re going to set up a repeat region in the panel content area in order for all the records in our database to be shown in separate panels.

- Select the **Panel content area (1)**
- Click the **Server Behavior icon (2)**
- Click the **Add Item (3)**
- Select the **Repeat Region** menu item (4)



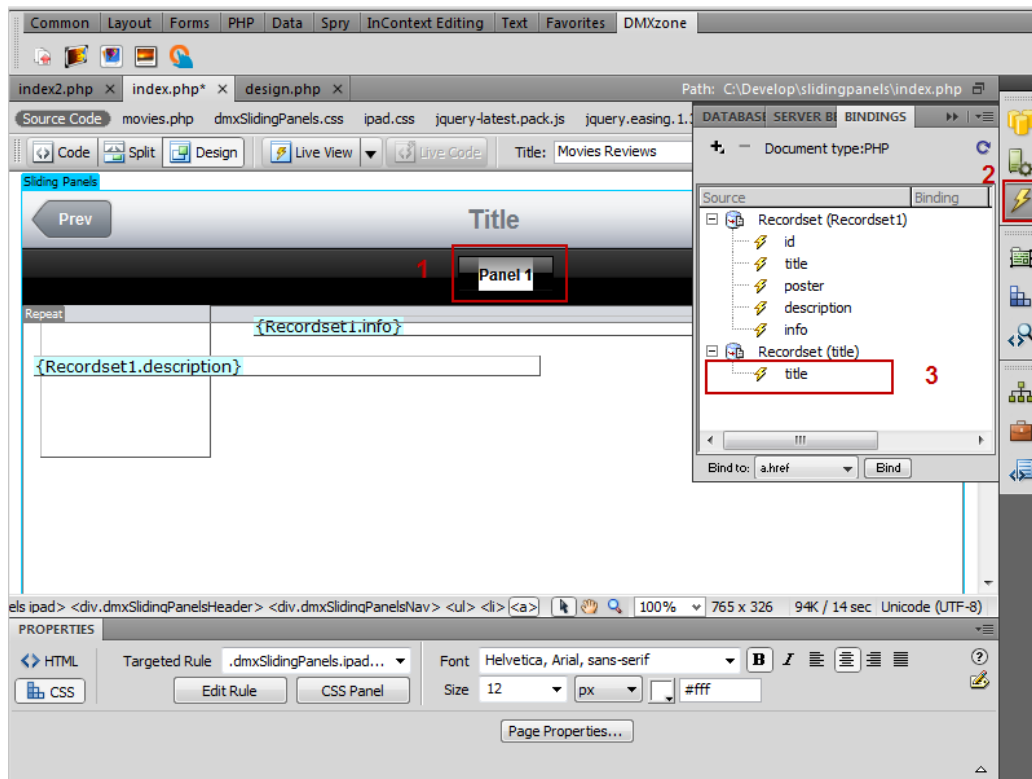
7. **Adding Recordset** - Choose the **recordset** that corresponds to your content (1), select all records (2) and click **OK** button (3).



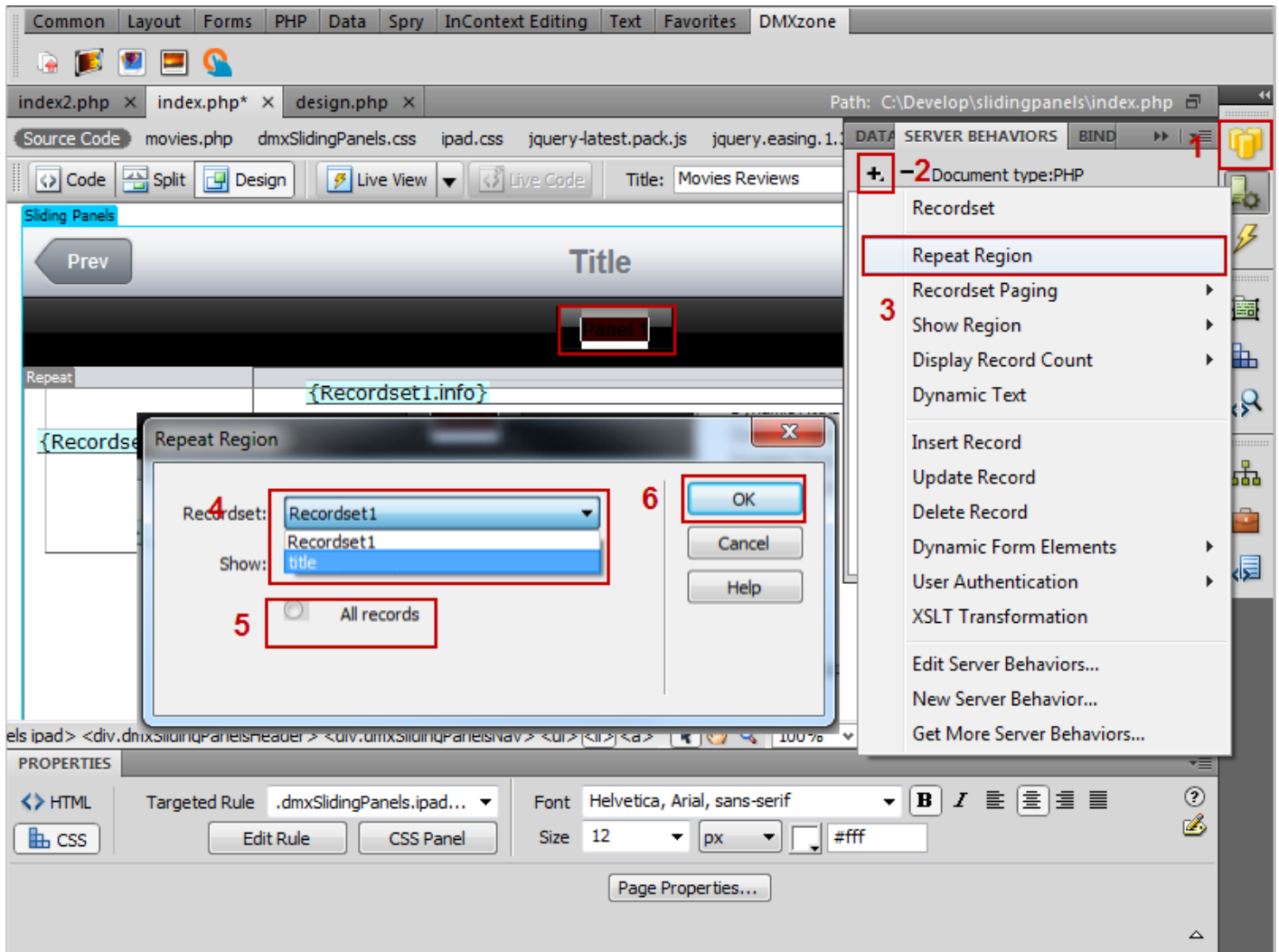
8. **Sliding Panels names** – Now, we're going to set the Sliding Panels to retrieve their panels' names from our database.

- Click on the **Panel 1** name and select the text (1)
- Click on the **Bindings icon** (2)
- Drag and drop the **recordset** in the place of the Panel title (We've already created a Recordset that retrieves the titles of the panels) (3)

***Note that you need two recordsets** – one for the dynamic content and another one for the titles of the panels. You can use the same database table for both recordsets



- Click the **Server behavior** icon (1)
- Click the **Add item** button (2)
- Select the **Repeat region** menu item (3)
- Select the **Recordset** that correspond the panels names (4)
- Select **All records** (5)
- Click the **OK** button (6)

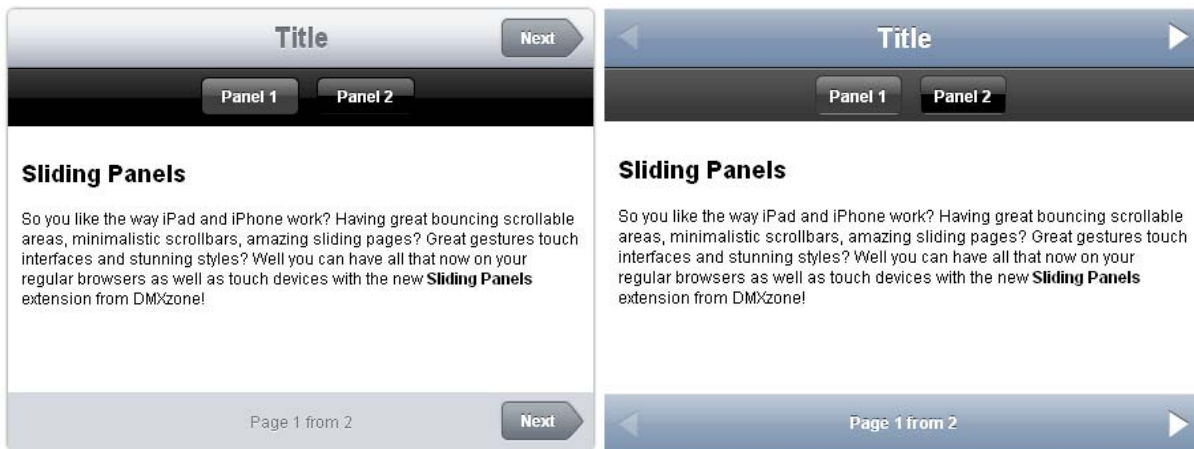


Now, you can save your work and preview it in your favorite browser!

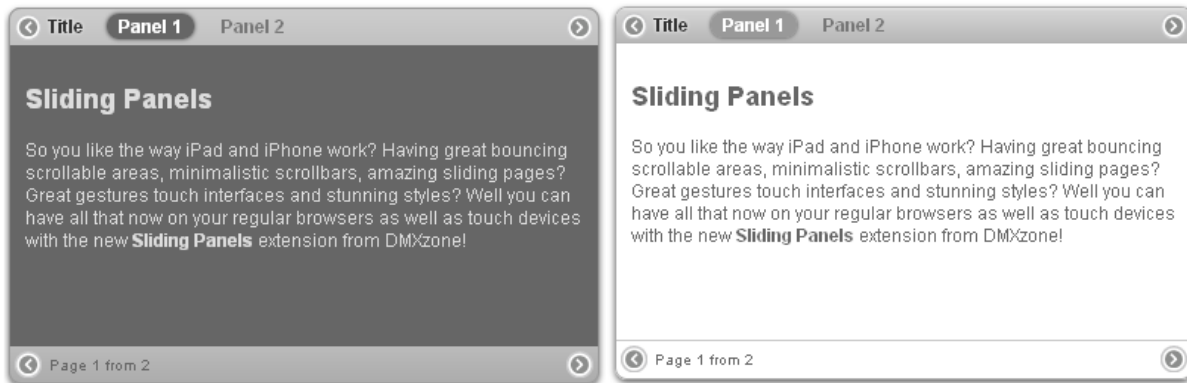
Reference: Sliding Panels Designs

In this part we will show you all 15 stylish CSS Designs included in the extension.

iPad/iPhone



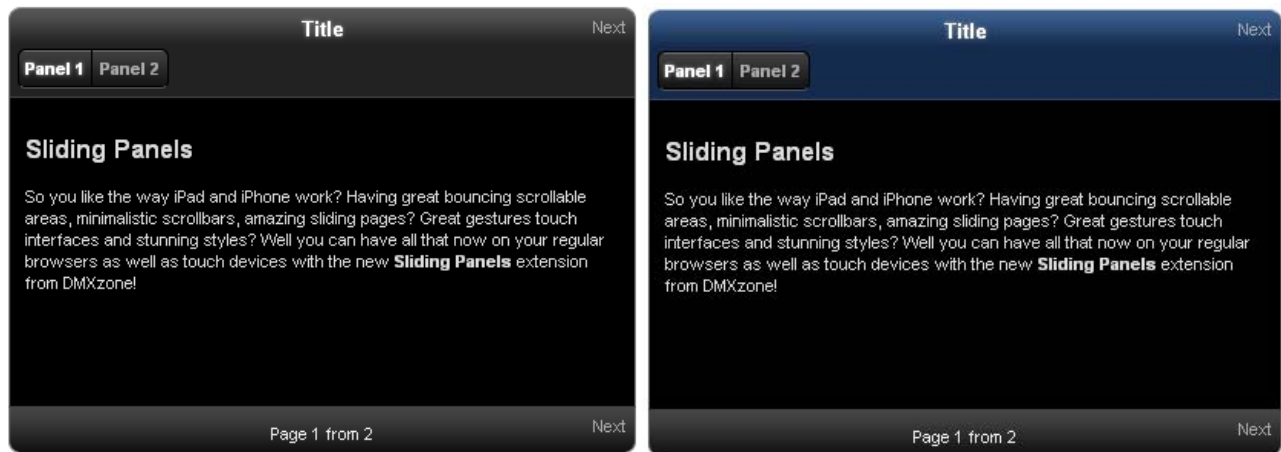
Apple Inspired Dark/Apple Inspired Light



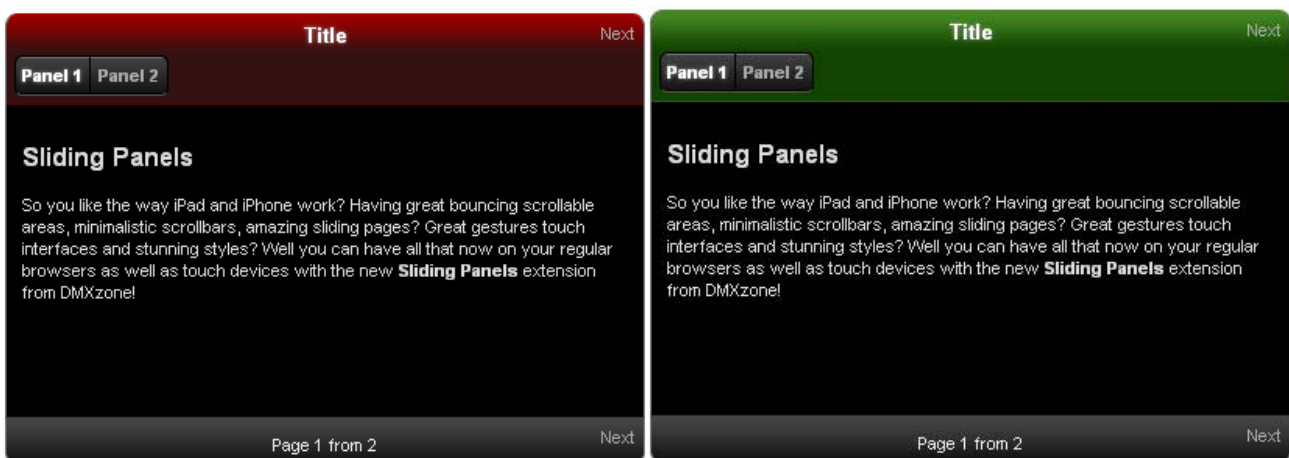
Basic Tabs/Brushed Metal



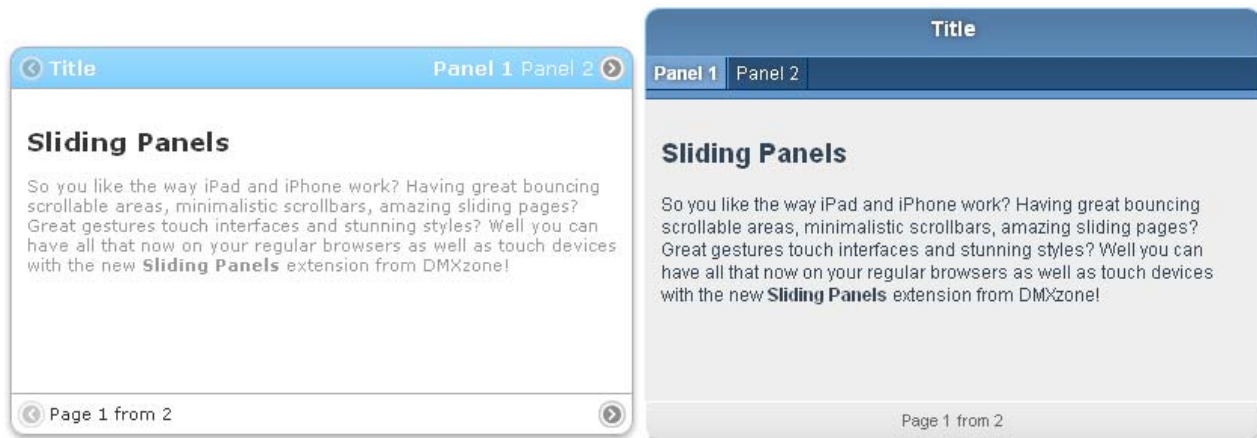
Dark Black/Dark Blue



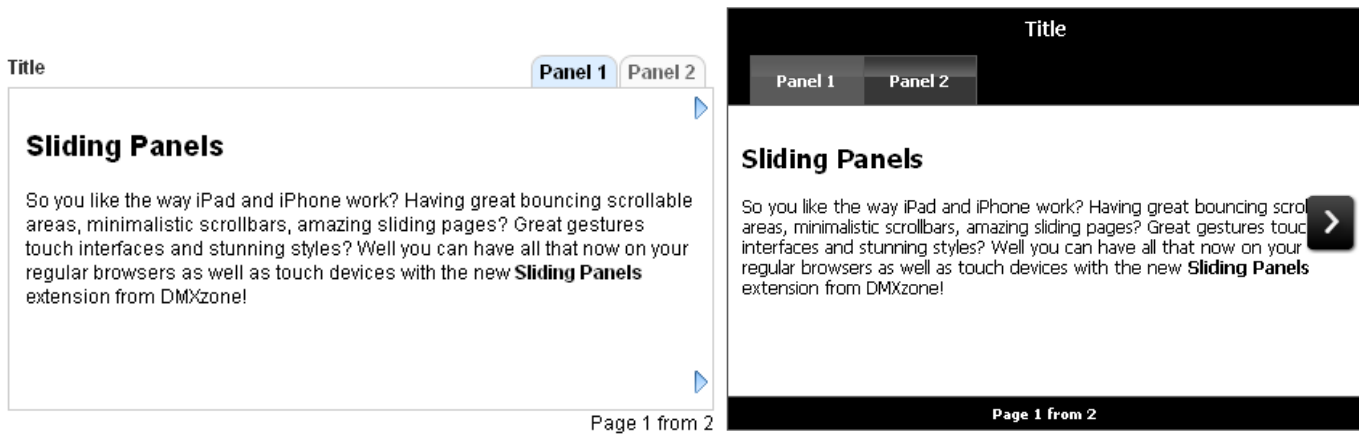
Dark Red/Dark Green



DMXzone Inspired/Elegant Blue



Simple Tabs Blue/Sony Inspired



Tabbed Blue



Video: Creating Simple Sliding Panels



With this [movie](#) will show you how to create simple panels with the help of **Sliding Panels** extension.

Video: Creating Dynamic Sliding Panels



With this [movie](#) we *will show* you how to create Sliding Panels that retrieve their content from a database using standard Dreamweaver Recordsets and Repeat Regions.