

Advanced Layer Popup Manual

Index

Index	2
About Advanced Layer Popup	3
Features	3
Create a popup window with an image	6
Introduction	6
Simple Layer Popup with an image	6
Applying popup window with a flash movie	9
Introduction	9
Popup window with a flash movie	9
Creating a popup window with a HTML page	12
Introduction	12
Creating a popup window containing an HTML page	12
Applying popup window with Quicktime movie	15
Introduction	15
Popup Window containing a Quicktime movie	15
Resizing the popup window to fit the image/movie	18
Introduction	18
How it works	18
Making the popup window resizable	21
Introduction	21
How it works	21
Making the popup window draggable	24
Introduction	24
How it works	24
Creating a popup window that always stays on top with Use Overlay	27
Introduction	27
How it works	27
Positioning the popup window anywhere on screen	30
Introduction	30
How it works	30
Making a popup window appear with a slide effect	33
Introduction	33
How it works	33
Making a popup window disappear with a slide effect	36
Introduction	36
How it works	36
Creating a slideshow with images	39
Introduction	39
How it works	39
Frequently asked questions	42
When to use Advanced Layer Popup.....	42
Creating link to a popup window	42
What can you use in a popup window.....	42
What is a behavior in Dreamweaver?.....	42

About Advanced Layer Popup



Create **amazing inline Layer Popups** with the press of a button. Inline Layer Popups can be displayed **much faster**, will **not be blocked** by any browser and are much more **user friendly**. Apply **rich designs**, include **and auto-fit photo's, slideshows, movies, alerts** or other content in your inline popups. Apply **special incoming effects** and place your popups anywhere you like on your site.

Features

Automatically open any content in a Layer Popup

Now you can open any content - html pages, images, Quick Time or other movies and Flash movies automatically in a layer popup!

Resize Layer Popup to fit the image/flash exactly

The popup can be opened to fit the image/flash exactly

Automatically generating the embedded code needed to play the movie or flash swf

The popup is generated containing the html code needed to play the movie or flash swf! No more struggling with different tags - Advanced Layer Popup takes care of that! It can handle all flash, quicktime and movies on the fly!

Position the Layer Popup with the image on every corner of the screen

You can position the popup on every corner of the screen! Just choose the place and the popup window will appear there! No matter what screen size the end user has! You can center the popup window or choose a corner!

Make slide shows quick and easy!

Now you can open images as a slideshow! Just choose the media files and you are ready to go!

Slideshow with transitions

You can also add cool transitions to make the slides rollover look fantastic!

Preview the slide show images directly in the extension window!

You get a preview of the image in the extension interface window!

Automatic size discovery of all Images and Flash movies!

When you add images or flash movies in the extension dialog – their dimensions are automatically displayed! No more looking up the right size!

Always On Top - display the popup on top and disable what is below

Disable and fade the content on the screen, also known as the lightbox effect!

Auto Close after specified time

You can specify now that the window should be closed after a specified time.

Custom and rich designs

The extension comes with multiple styles for the popup windows!

Incoming and outgoing effects together with fade in/out

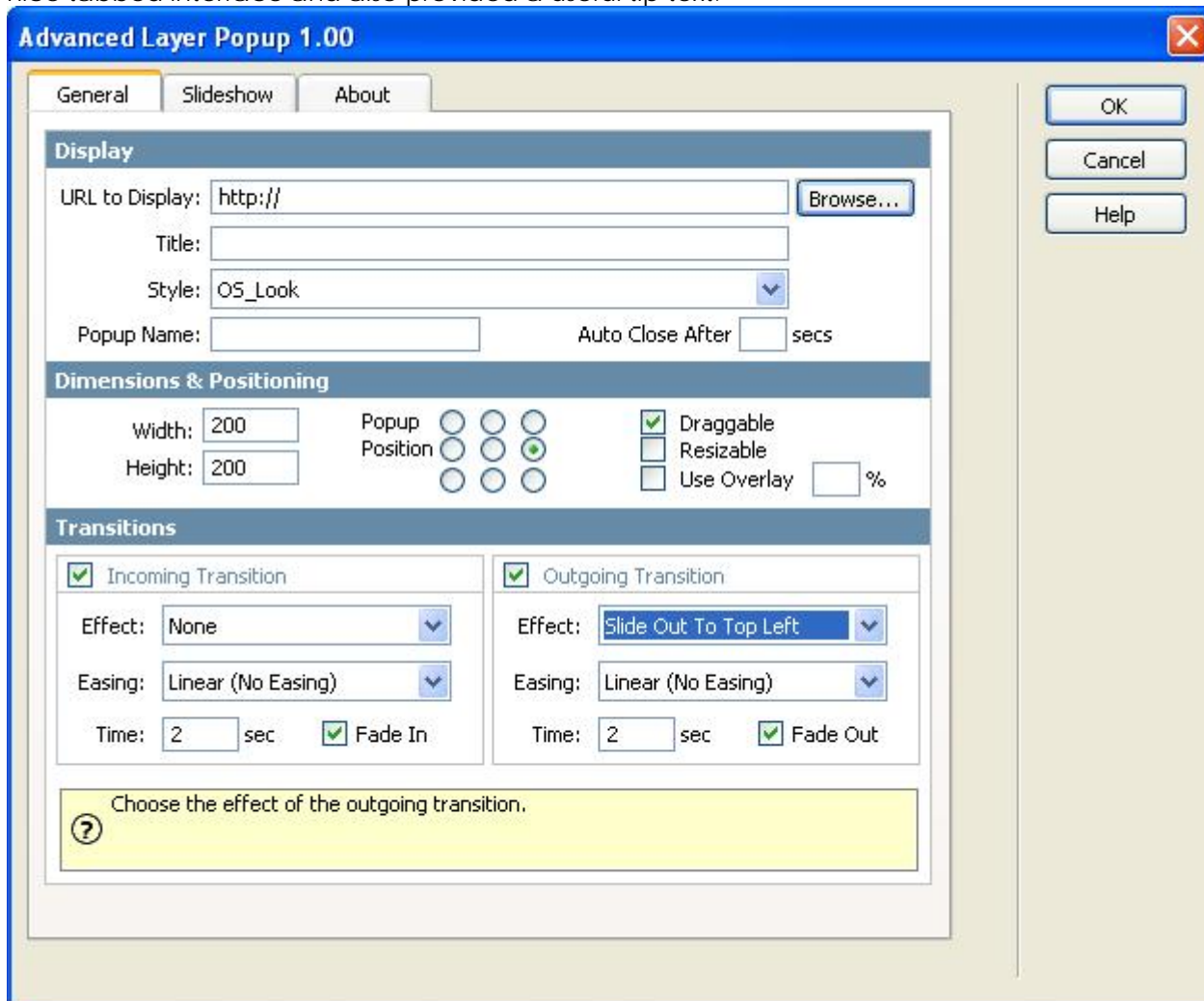
You can let the popup slide in and out the screen from different positions and/or do a fade in/out.

Fully cross browser compatible.

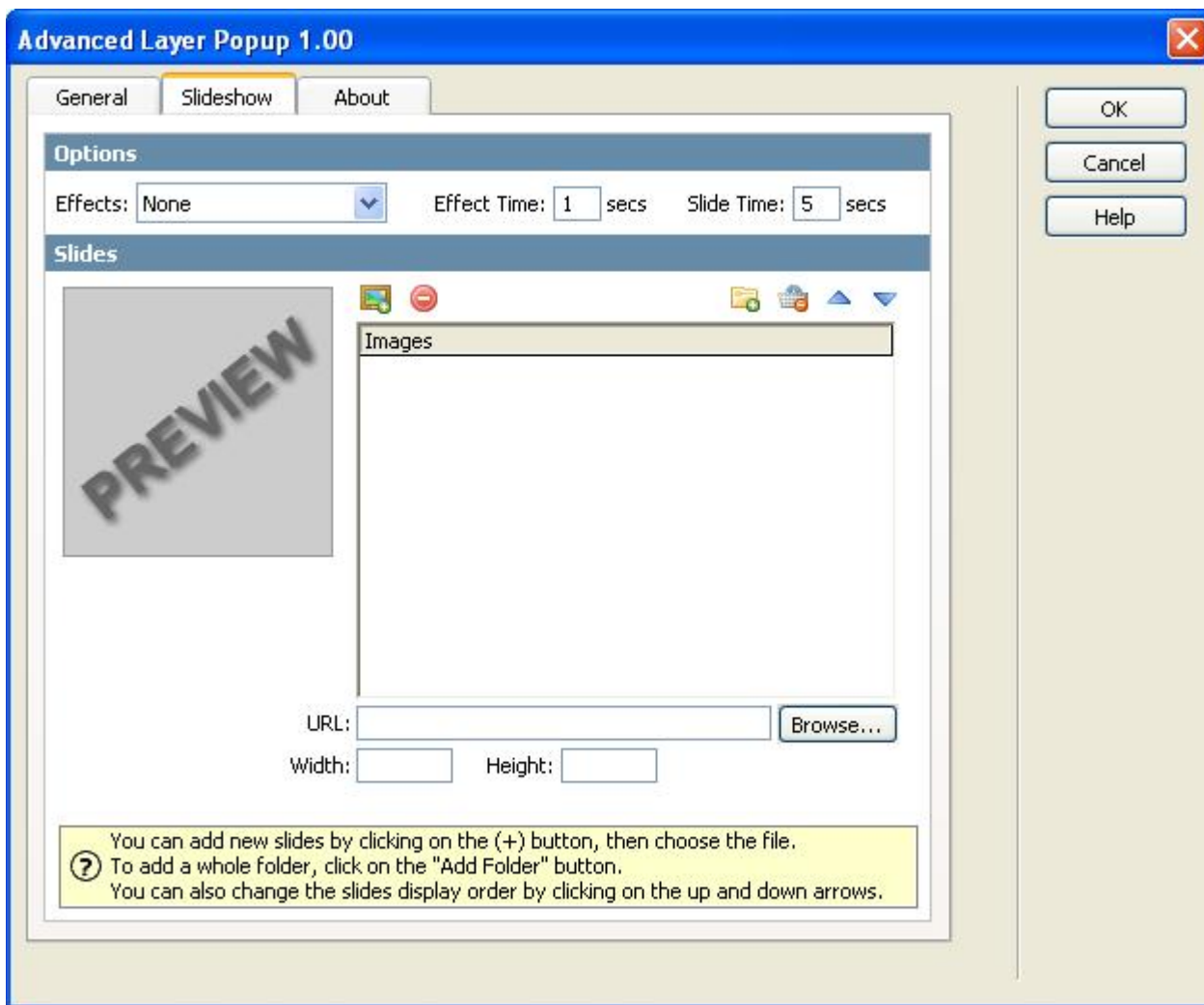
It supports all modern browsers currently available.

Interface for ease of use in Dreamweaver

The user interface of About Advanced Layer Popup is very clear! We have grouped all related options in a nice tabbed interface and also provided a useful tip text.



You can find all the basic options in the General tab.



The Slideshow tab contains slideshow options

Create a popup window with an image

Introduction

In this tutorial we will explain how to create a popup window with an image from a link.

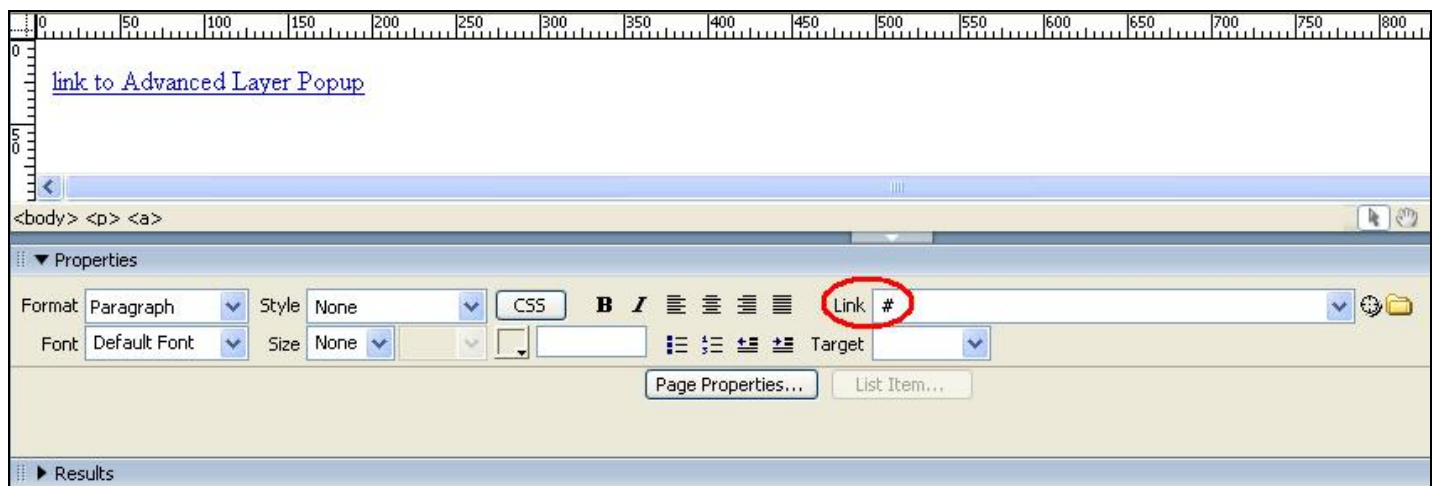
Simple Layer Popup with an image

1. Create a new page.

Open a new page in Dreamweaver. Of course an existing one will do well also.

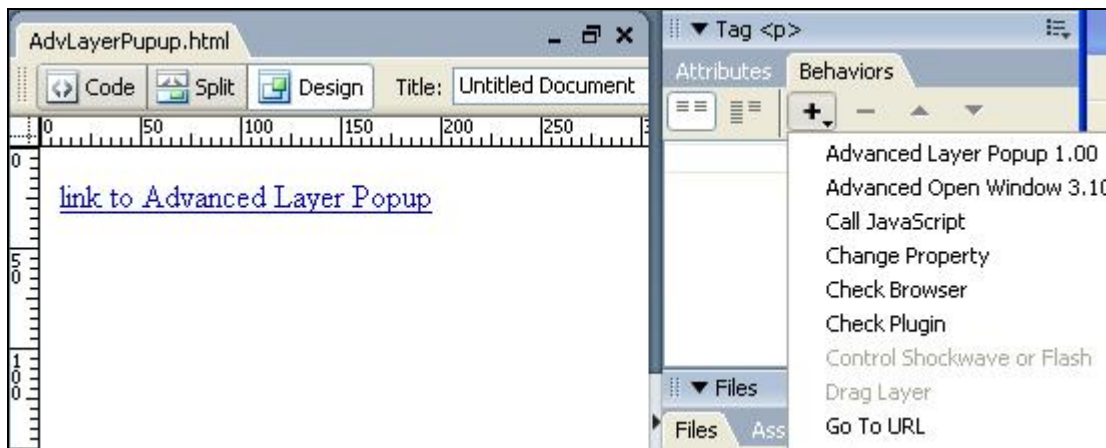
2. Add a link to the Layer Popup.

Put in some text or an image that will serve as a link that the user can click to open the image in a Layer Popup. When you use text as a link put a # in the Link section of the Properties box.

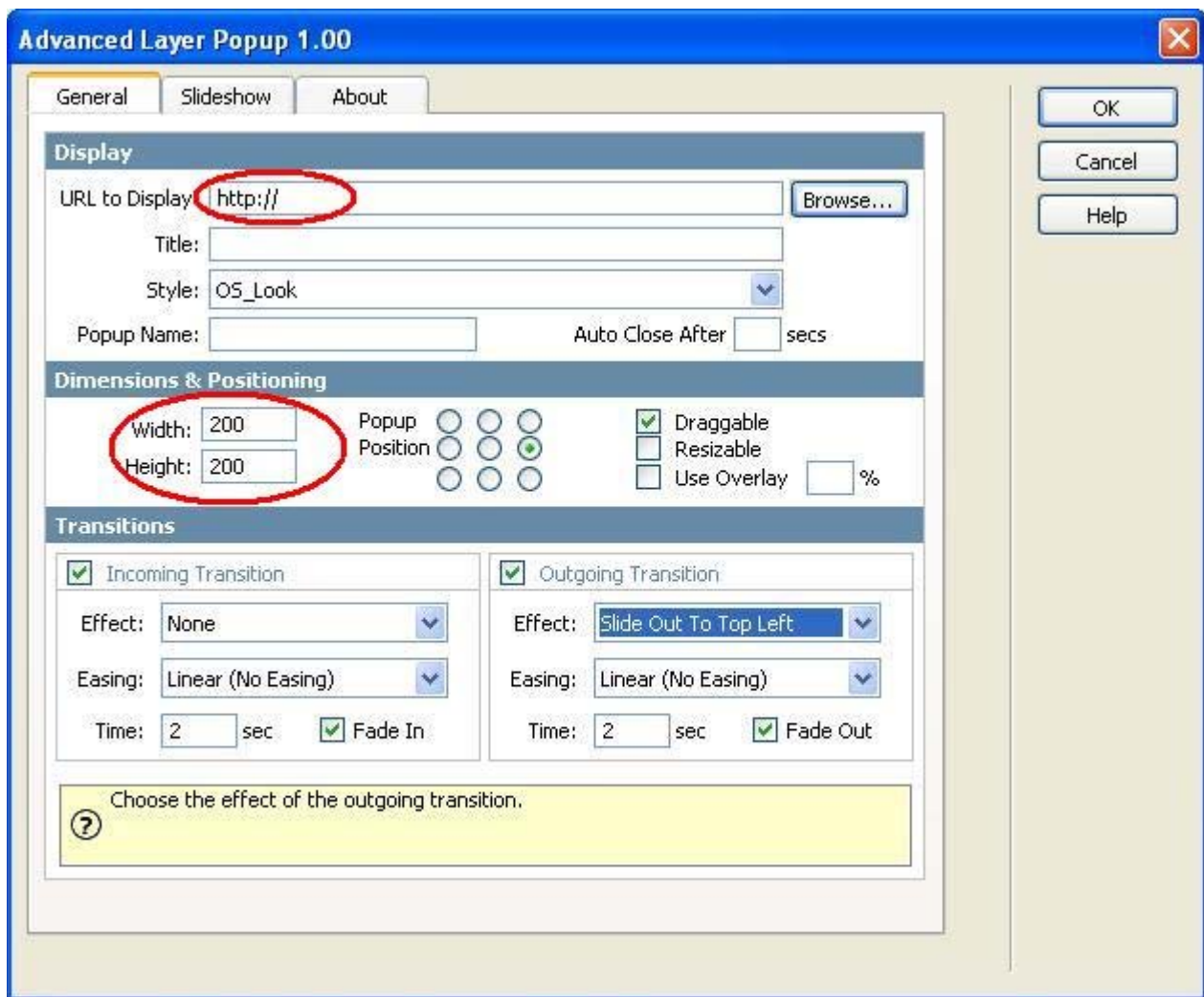


3. Insert the popup window behavior.

You need to save your file right now to be able to apply the Advanced Layer Popup behavior. Select the link by clicking on it. Choose Advanced Layer Popup from the Behaviors panel.



This will open the Advanced Layer Popup Panel.



In **Display** you can browse to the image file you would like to display. Name your window, choose a window style and if you would like the window to close automatically, enter the seconds.

In **Dimensions & Position** the width and height are automatically displayed. You can specify where on the users screen you would like the Layer Popup to appear. In **Transitions** you can specify the incoming and outgoing transition effects. Click ok.

4. Change the Event for the Layer Popup

You can change the event for the Layer Popup. When should the Layer Popup be displayed. When the behavior was placed on an object then the default is `onClick`, when the body was selected the default is `onLoad`.

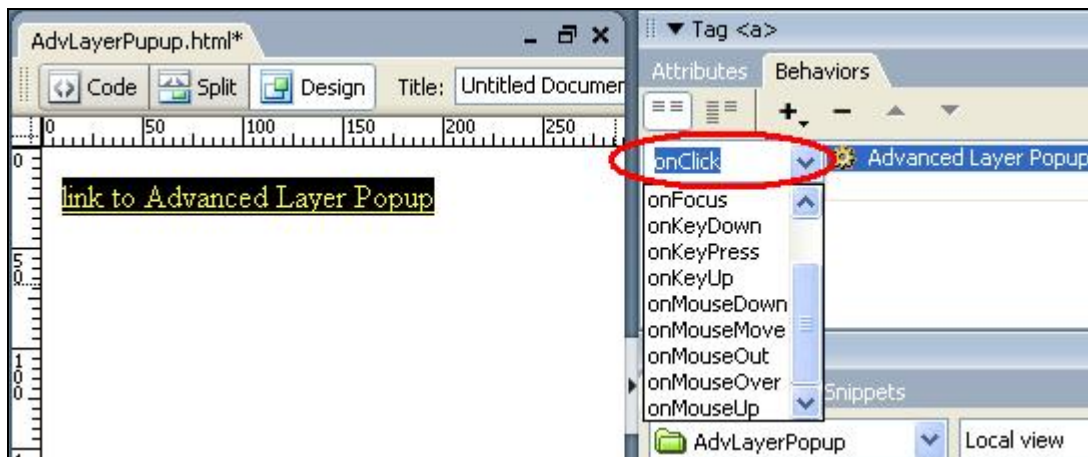
The most common options to use are:

onLoad: The Layer Popup will appear as soon as the page is loaded

onClick: The Layer Popup will appear when the user clicks on the link.

onDbClick: The Layer Popup will appear after the user double-clicks on the link.

onMouseOver: The Layer Popup will appear when the user moves over the link with the mouse.



5. Save the file in your site

You will need to save the file in your site. You can preview the page in your browser by pressing F12.

Applying popup window with a flash movie

Introduction

In this tutorial we will explain how to create a popup window containing a Flash Movie, .swf file. The code to play the movie is automatically generated!

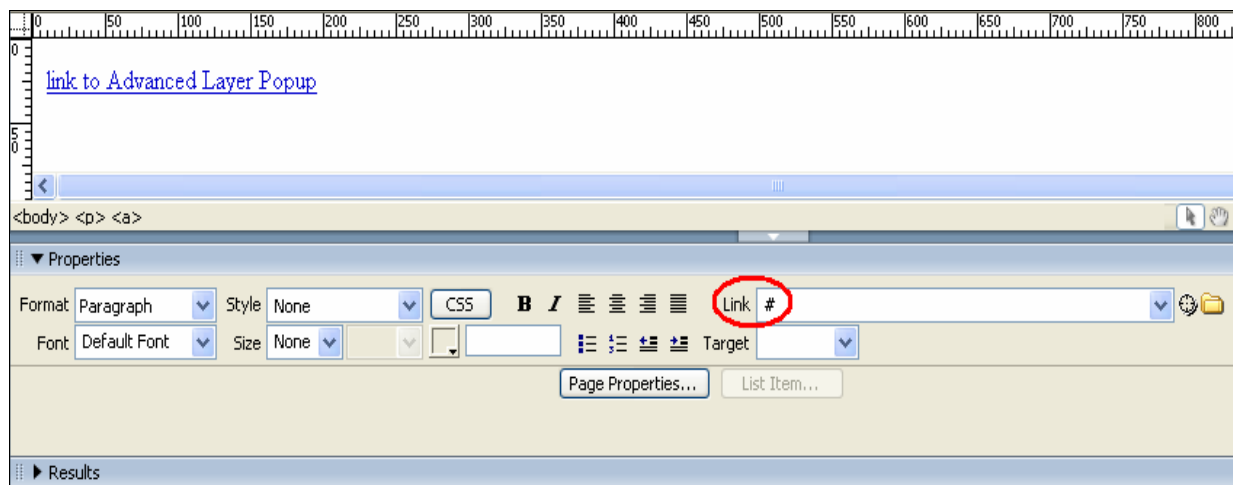
Popup window with a flash movie

1. Create a new page.

Open a new page in Dreamweaver. Of course an existing one will do well also.

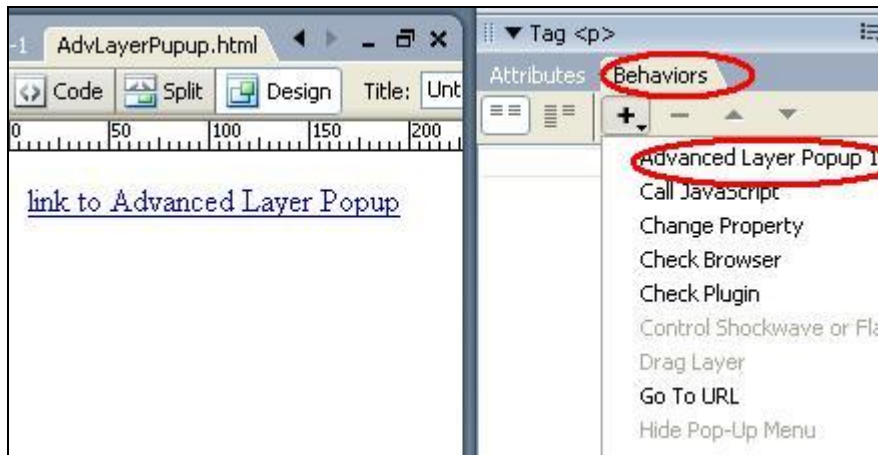
2. Insert a link to the flash movie

Put in some text or an image that will serve as a link that the user can click to open the html page in a Layer Popup. When you use text as a link put a # in the Link section of the Properties box.



3. Insert the Layer Popup Behavior

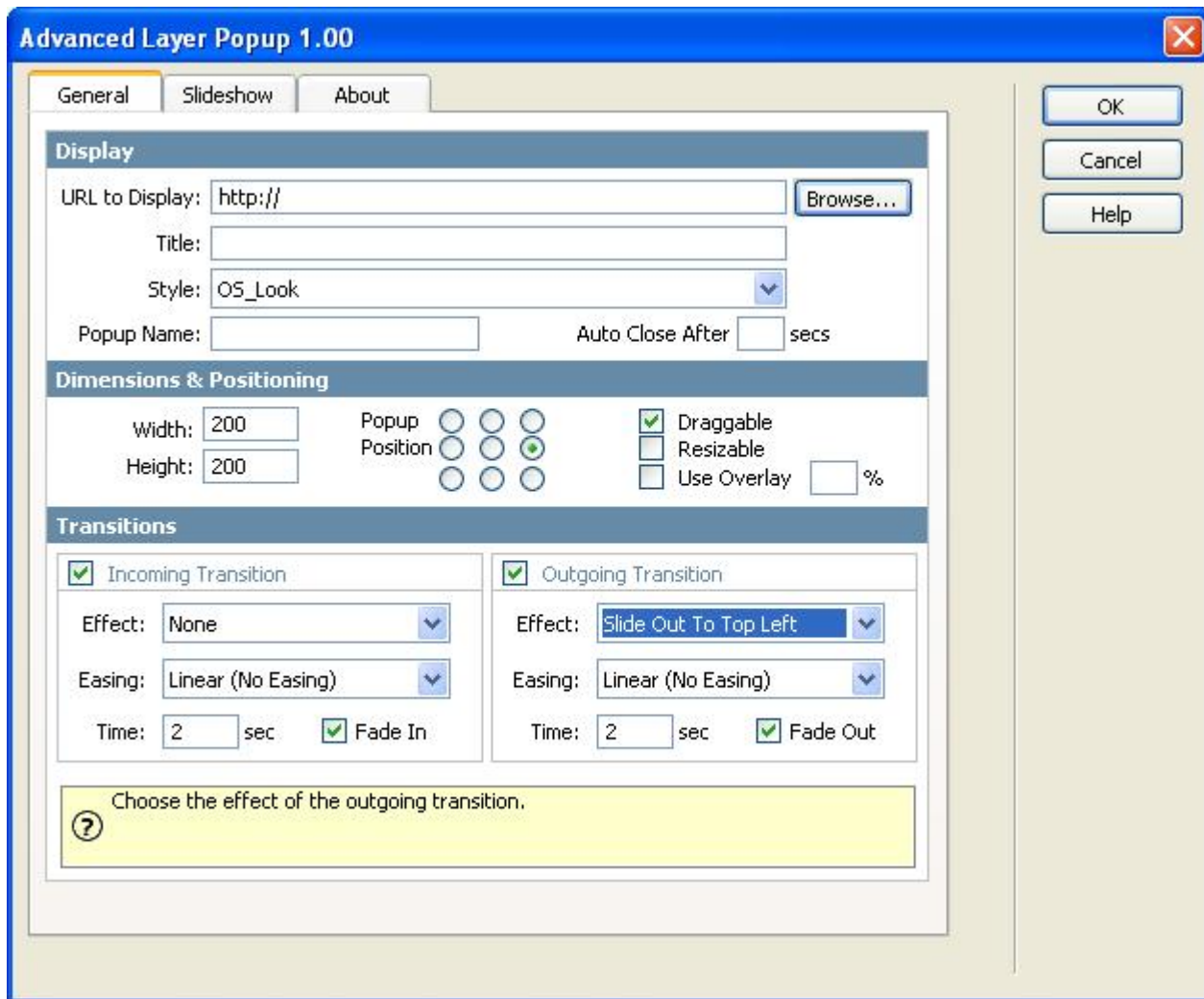
Select the text or image link by clicking on it. Choose **Advanced Layer Popup** from the **Behaviors** panel



This will Open the Advanced Layer Popup.

In **Display** you can browse to the image file you would like to display. Name your window and if you would like the window to close automatically, enter the seconds.

In **Dimensions & Position** the width and height are automatically displayed. You can specify where on the users screen you would like the Layer Popup to appear. In Transitions you can specify the incoming and outgoing transition effects. Click ok.



In **Transitions** you can specify the incoming and outgoing transition effects. Effects option let's you choose the effect to use for the image slide show. Easing is another option for an effect to choose the shape of the motion. Timer option is to determine the time interval. Fade in option let's you specify whether the motion effect will fade in or not.

Click ok.

Once the popup window is open, the **movie will start playing automatically**. The code needed to play the movie is automatically generated behind the scenes!

4. Save the file in your site

You will need to save the file in your site. You can preview the page in your browser by pressing F12.

Creating a popup window with a HTML page

Introduction

You can also let the Advanced Layer Popup match the window size to the users screen! So the popup window takes the exact size of the users screen!

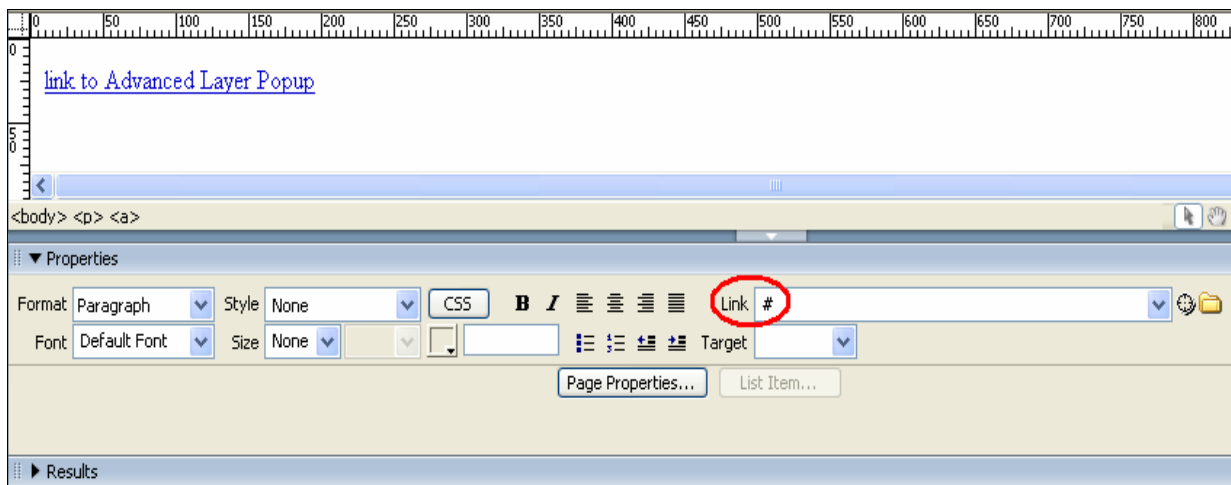
Creating a popup window containing an HTML page

1. Create a new page.

Open a new page in Dreamweaver 8. Of course an existing one will do well also.

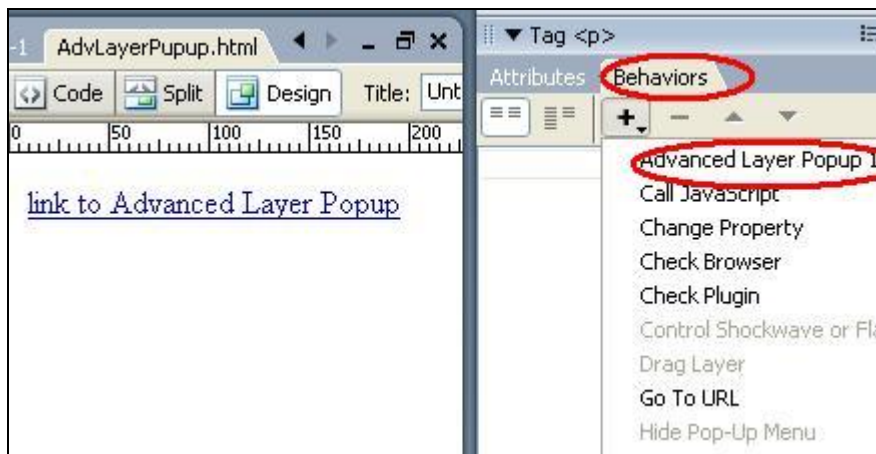
2. Insert a link to the html page

Put in some text or an image that will serve as a link that the user can click to open the html page in a popup window. When you use **text as a link put a # in the Link section** of the Properties box.



3. Insert the Layer Popup Behavior

Select the text or image link by clicking on it. Choose **Advanced Layer Popup** from the **Behaviors** panel



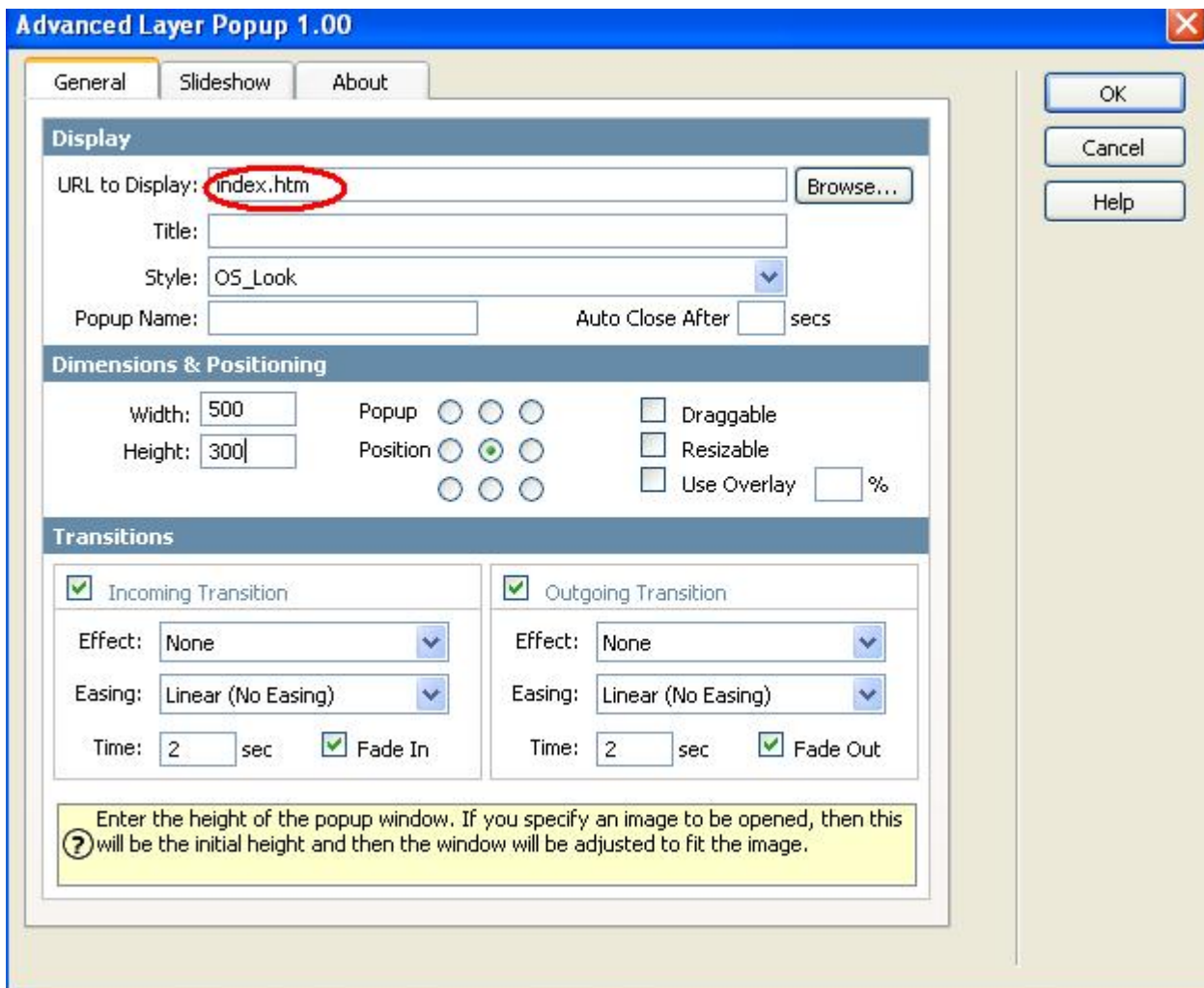
This will Open the Advanced Layer Popup.

In **Display** you can browse to the html file you would like to display.
Name your window and if you would like the window to close automatically, enter the seconds.

In **Dimensions & Position** the width and height must be specified for the popup.
You can specify where on the users screen you would like the Layer Popup to appear.

In **Transitions** you can specify the incoming and outgoing transition effects.
Effects option let's you choose the effect to use for the image slide show.
Easing is another option for an effect to choose the shape of the motion.
Timer option is to determine the time interval.
Fade in option let's you specify whether the motion effect will fade in or not.

Click OK.



4. Save the file in your site

You will need to save the file in your site. You can preview the page in your browser by pressing F12.

Applying popup window with Quicktime movie

Introduction

In this tutorial we will explain how to create a popup window containing a Quicktime movie, with a .mov extension. The code to play the Quicktime movie in the popup window is automatically generated.

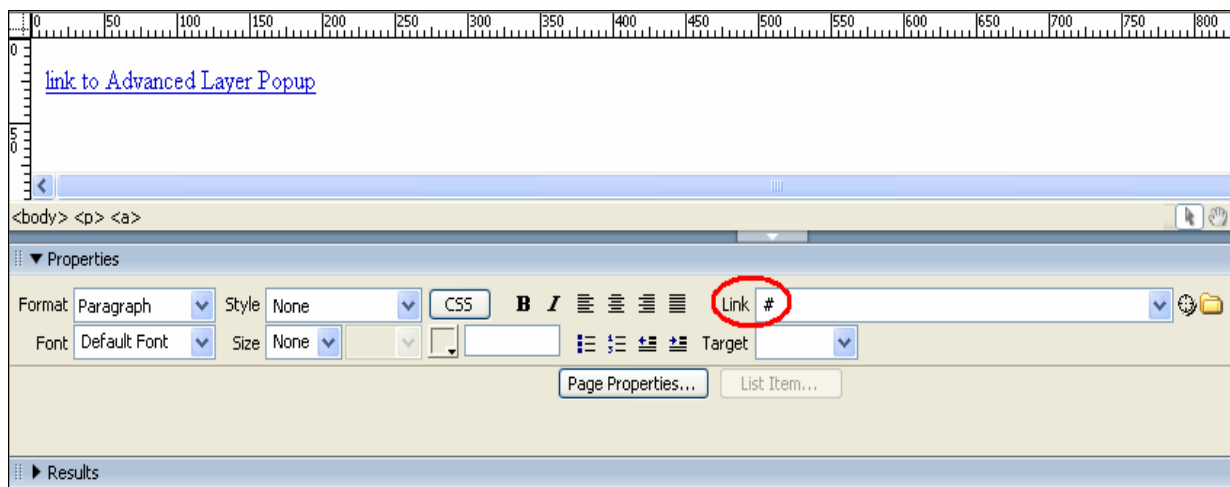
Popup Window containing a Quicktime movie

1. Create a new page.

Open a new page in Dreamweaver 8. Of course an existing one will do well also.

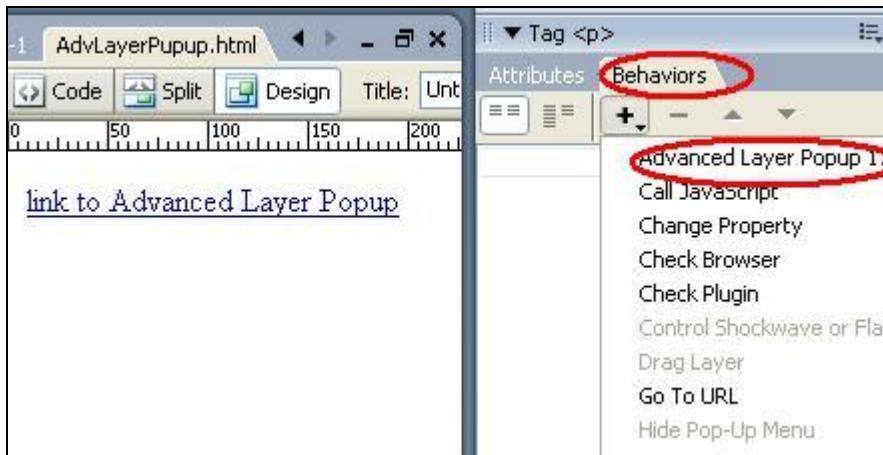
2. Insert a link to the Quicktime movie

Put in some text or an image that will serve as a link that the user can click to open the Quicktime movie in a popup window. When you use text as a link put a # in the Link section of the Properties box.

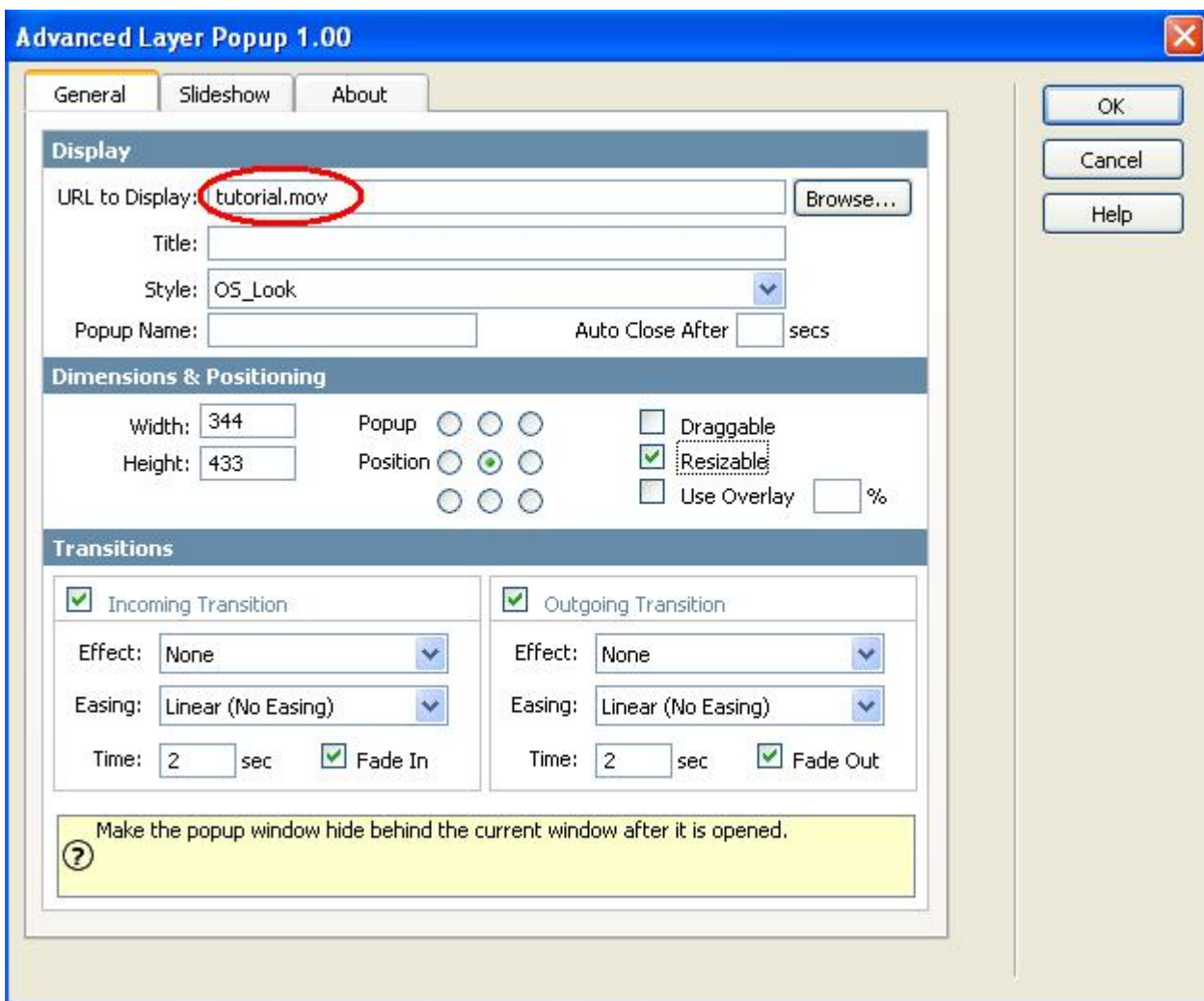


3. Insert the Layer Popup Behavior

Select the text or image link by clicking on it. Choose **Advanced Layer Popup** from the Behaviors panel



This will Open the Advanced Layer Popup.



In **Display** you can browse to the image file you would like to display.
Name your window and if you would like the window to close automatically, enter the seconds.

In **Dimensions & Position** the width and height are automatically displayed.
You can specify where on the users screen you would like the Layer Popup to appear.

In **Transitions** you can specify the incoming and outgoing transition effects.
Effects option let's you choose the effect to use for the image slide show.
Easing is another option for an effect to choose the shape of the motion.
Timer option is to determine the time interval.
Fade in option let's you specify whether the motion effect will fade in or not.

Click OK.

4. Save the file in your site

You will need to save the file in your site. You can preview the page in your browser by pressing F12.

Resizing the popup window to fit the image/movie

Introduction

The popup window will automatically resize to fit the image/movie! After you browse to the image or movie file the dimensions of the file are automatically displayed. No more searching for the right dimensions

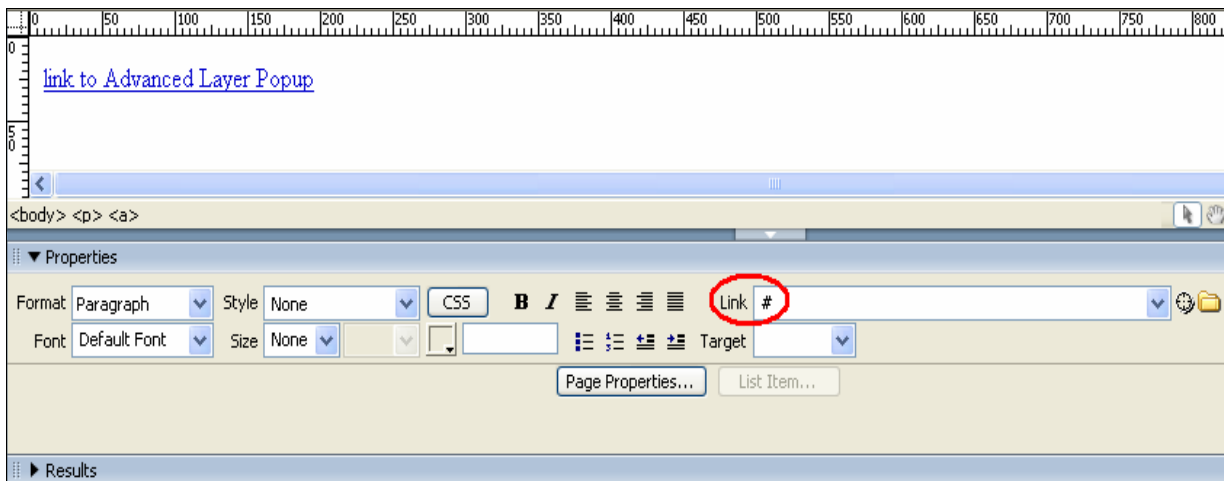
How it works

1. Create a new page.

Open a new page in Dreamweaver 8. Of course an existing one will do well also.

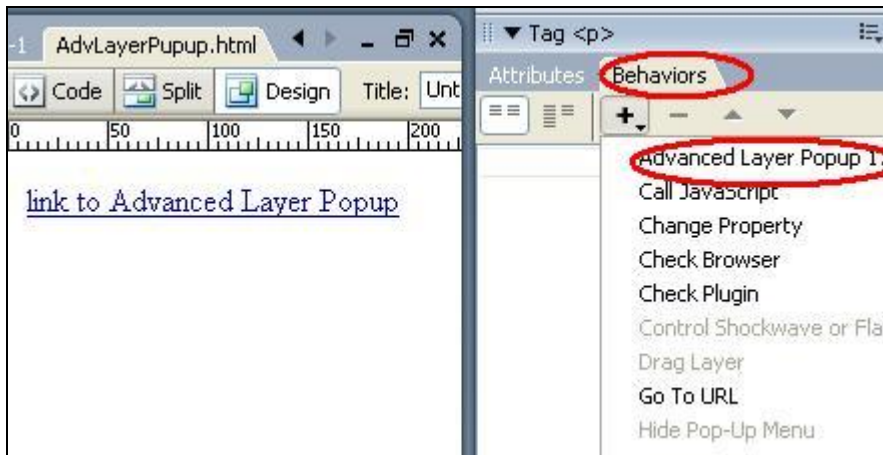
2. Insert a link to the html page

Put in some text or an image that will serve as a link that the user can click to open the html page in a popup window. When you use **text as a link put a # in the Link section** of the Properties box.

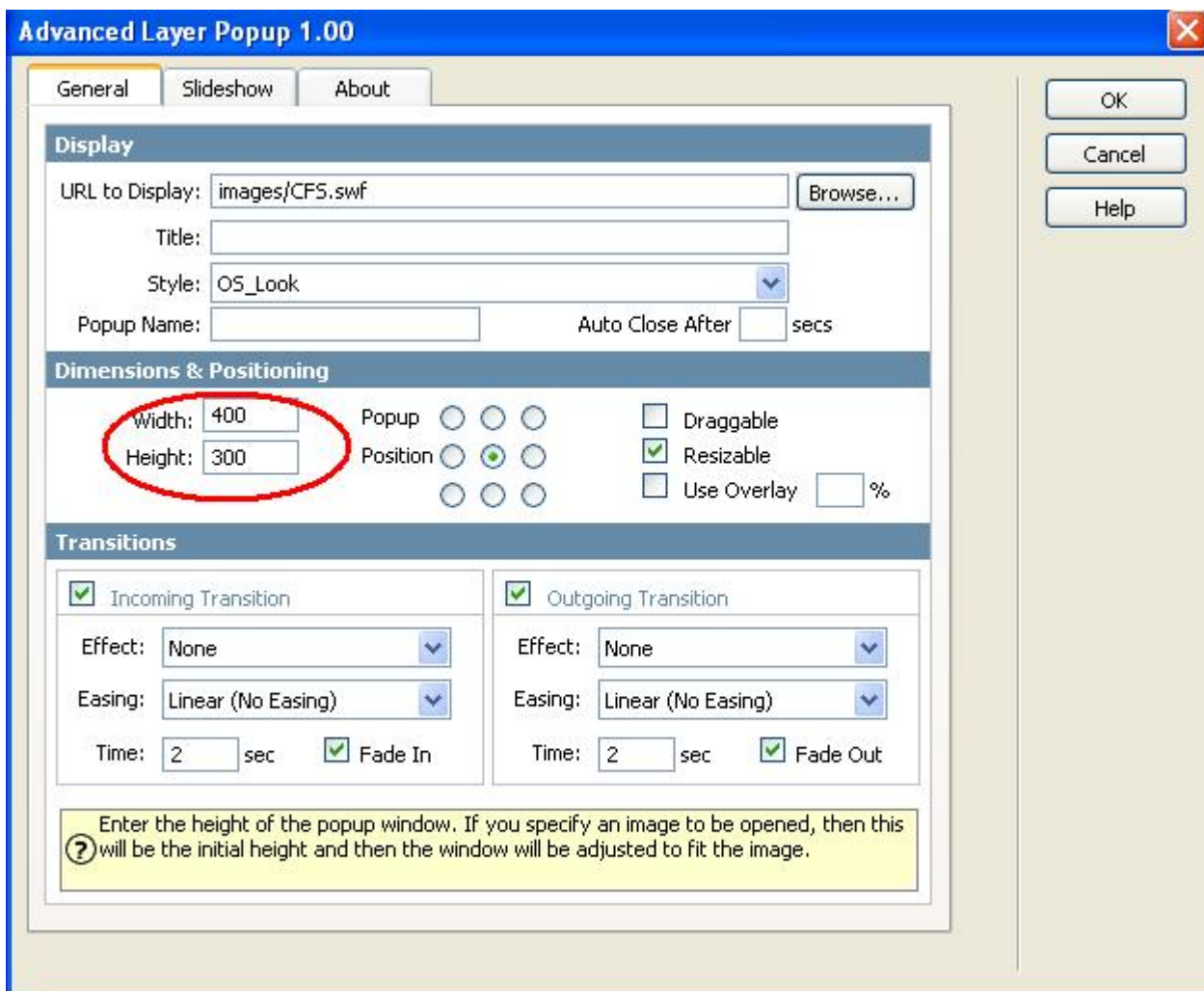


3. Insert the Layer Popup Behavior

Select the text or image link by clicking on it. Choose **Advanced Layer Popup** from the Behaviors panel



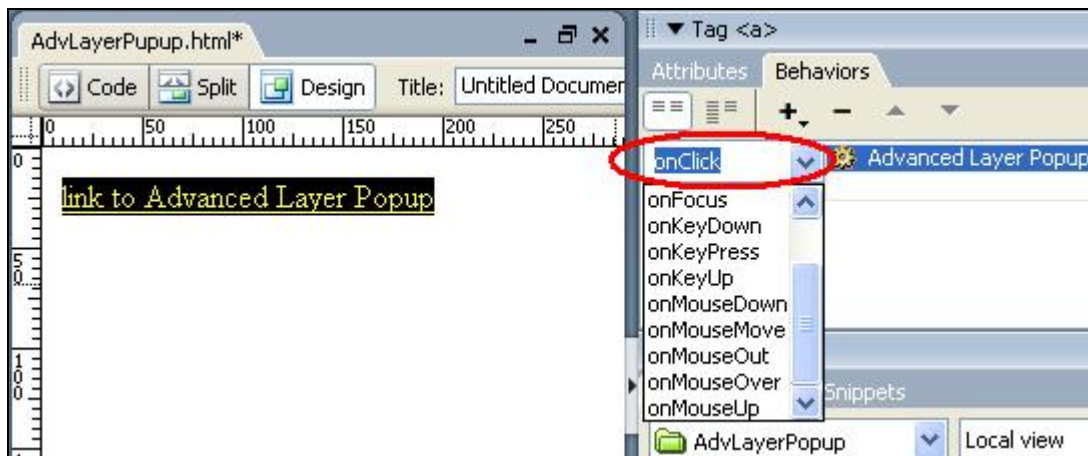
This will Open the Advanced Layer Popup.



In **Display** you can browse to the image file you would like to display.
Name your window and if you would like the window to close automatically, enter the seconds.
In **Dimensions & Position** the width and height are automatically displayed.
You can specify where on the users screen you would like the Layer Popup to appear.
In **Transitions** you can specify the incoming and outgoing transition effects.
Effects option let's you choose the effect to use for the image slide show.
Easing is another option for an effect to choose the shape of the motion.
Timer option is to determine the time interval.
Fade in option let's you specify whether the motion effect will fade in or not.
Click ok.

4. Create the Events for the Popup Window

You will need to create an event for the popup window. When should the layer popup be displayed.



5. Save the file in your site

You will need to save the file in your site. You can preview the page in your browser by pressing F12.

Making the popup window resizable

Introduction

You can also resize the popup window with a drag of the mouse if choose this feature in the Advanced Layer Popup!

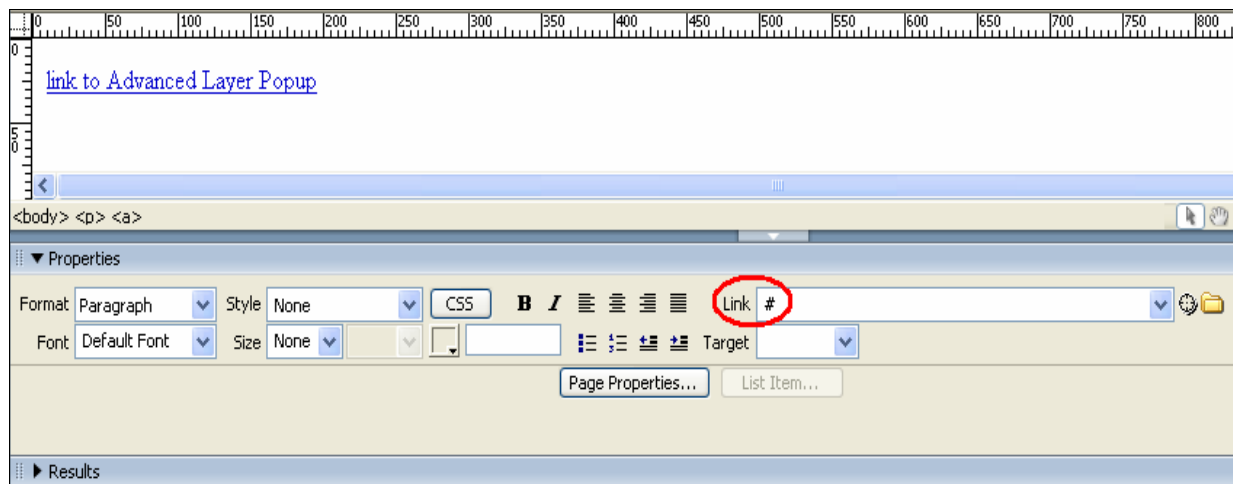
How it works

1. Create a new page.

Open a new page in Dreamweaver 8. Of course an existing one will do well also.

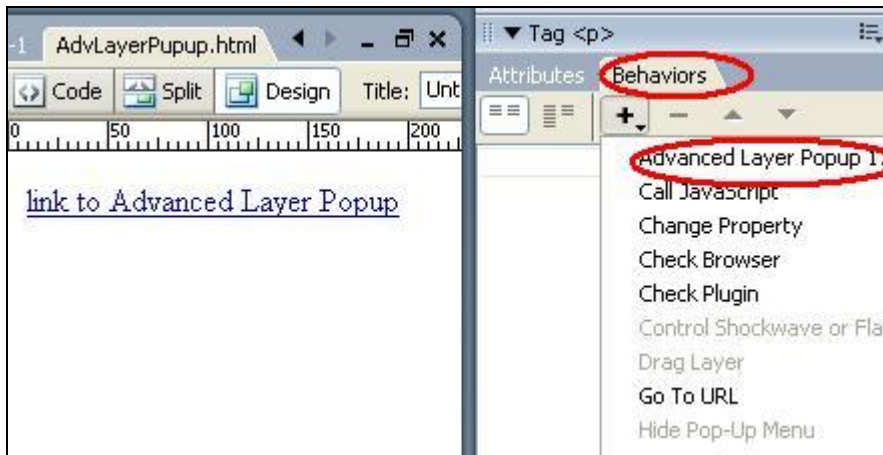
2. Insert a link for the popup window behavior

Put in some text or an image that will serve as a link that the user can click to open the html page in a popup window. When you use text as a link put a # in the Link section of the Properties box.

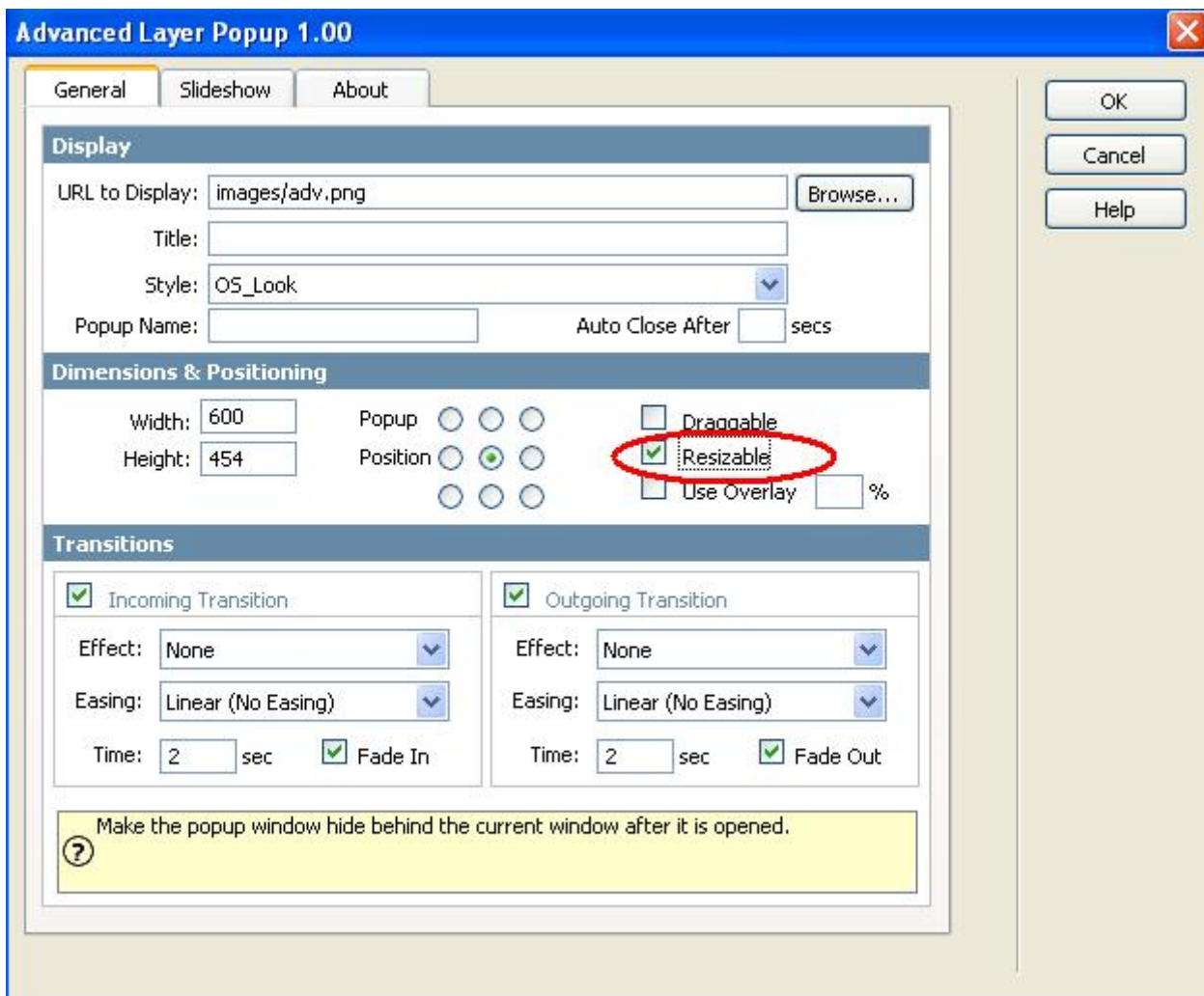


3. Insert the Layer Popup Behavior

Select the text or image link by clicking on it. Choose **Advanced Layer Popup** from the Behaviors panel



This will Open the Advanced Layer Popup.



In **Display** you can browse to the image file you would like to display.
Name your window and if you would like the window to close automatically, enter the seconds.

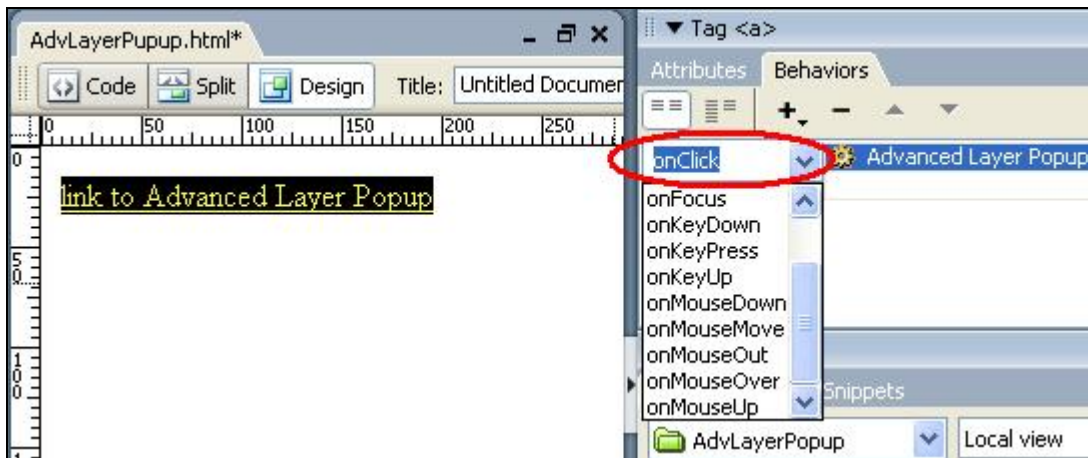
In **Dimensions & Position** the width and height are automatically displayed.
You can specify where on the users screen you would like the Layer Popup to appear.

In **Transitions** you can specify the incoming and outgoing transition effects.
Effects option let's you choose the effect to use for the image slide show.
Easing is another option for an effect to choose the shape of the motion.
Timer option is to determine the time interval.
Fade in option let's you specify whether the motion effect will fade in or not.

Click OK.

4. Create the Events for the Popup Window

You will need to create an event for the popup window. When should the layer popup be displayed.



5. Save the file in your site

You will need to save the file in your site. You can preview the page in your browser by pressing F12.

Making the popup window draggable

Introduction

You can also drag the popup window all over the screen with the mouse if you choose this feature in the Advanced Layer Popup!

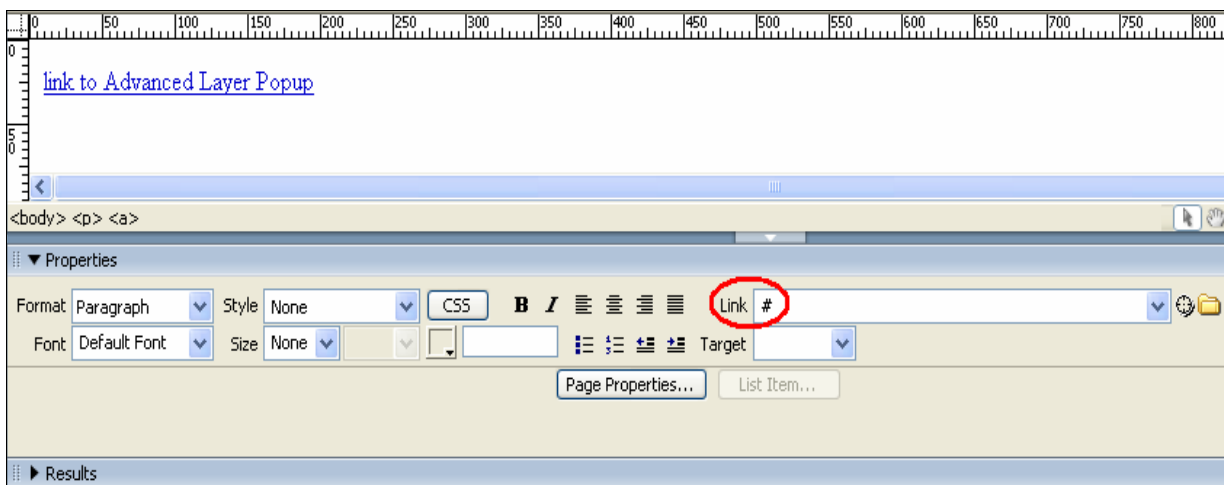
How it works

1. Create a new page.

Open a new page in Dreamweaver 8. Of course an existing one will do well also.

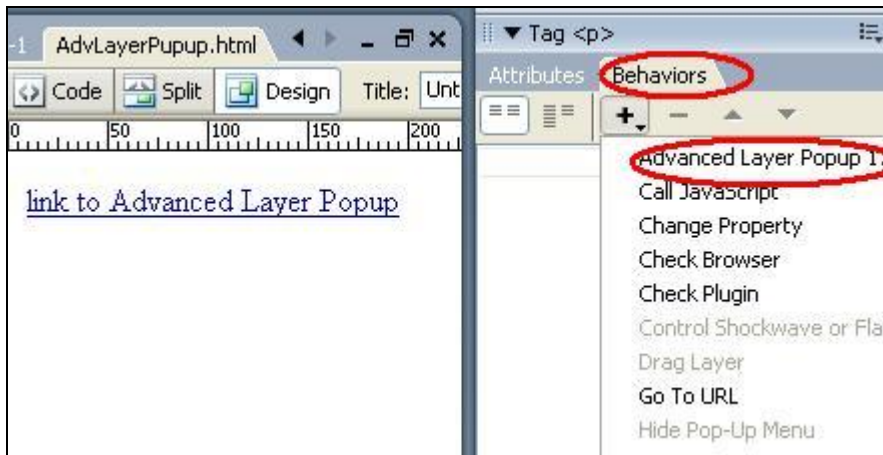
2. Insert a link for the popup window behavior

Put in some text or an image that will serve as a link that the user can click to open the html page in a popup window. When you use text as a link put a # in the Link section of the Properties box.

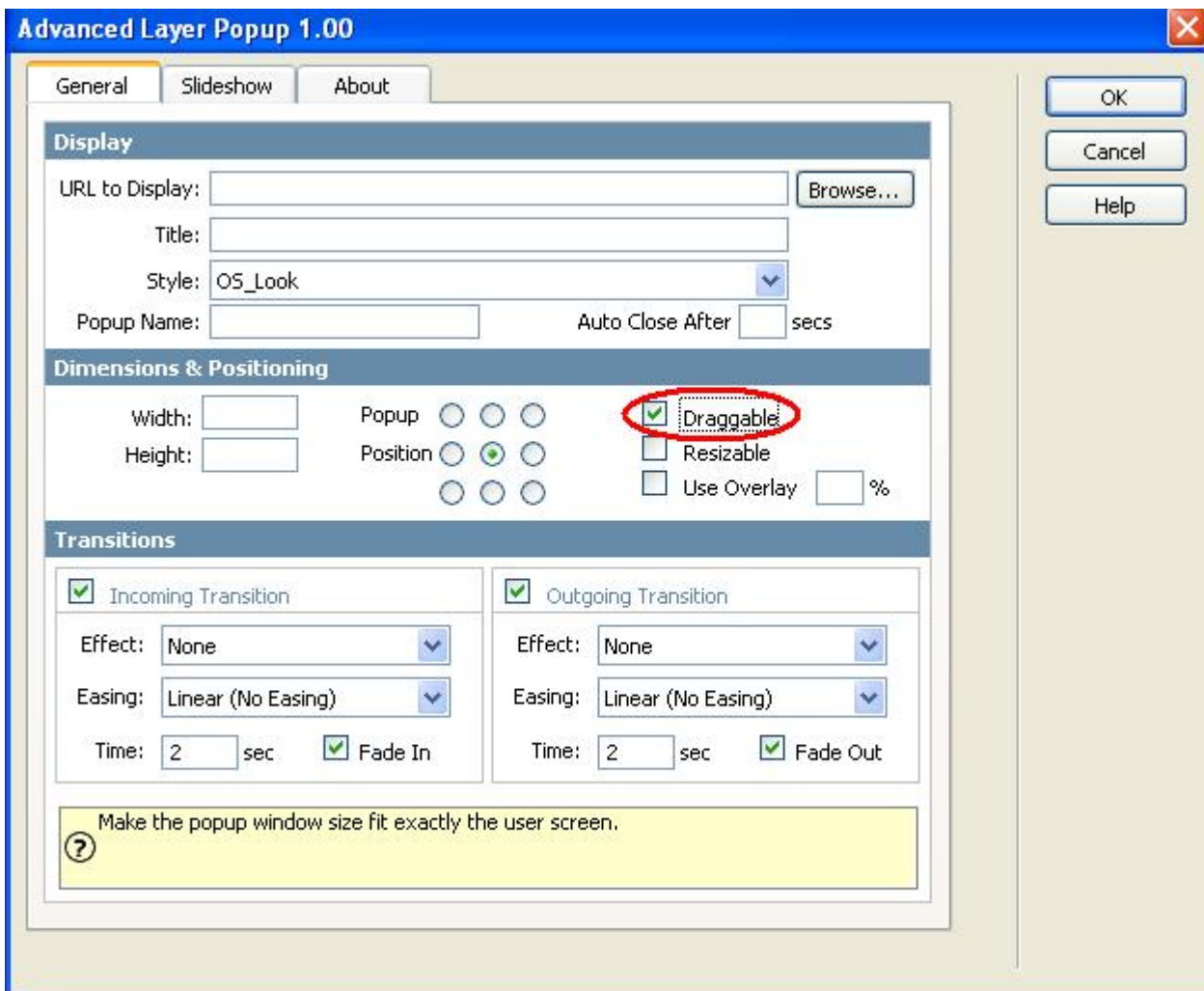


3. Insert the Layer Popup Behavior

Select the text or image link by clicking on it. Choose **Advanced Layer Popup** from the Behaviors panel



This will Open the Advanced Layer Popup.



In **Display** you can browse to the image file you would like to display.
Name your window and if you would like the window to close automatically, enter the seconds.

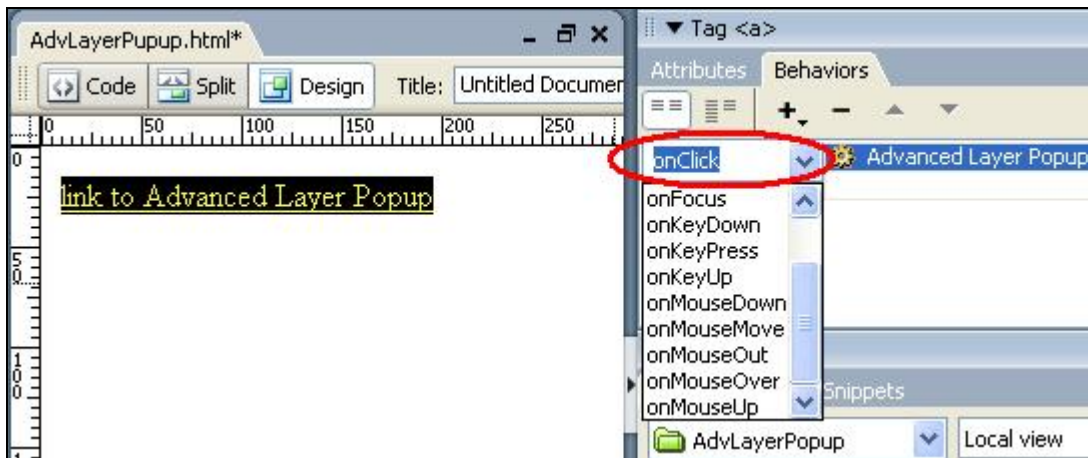
In **Dimensions & Position** the width and height are automatically displayed.
You can specify where on the users screen you would like the Layer Popup to appear.

In **Transitions** you can specify the incoming and outgoing transition effects.
Effects option let's you choose the effect to use for the image slide show.
Easing is another option for an effect to choose the shape of the motion.
Timer option is to determine the time interval.
Fade in option let's you specify whether the motion effect will fade in or not.

Click OK.

4. Create the Events for the Popup Window

You will need to create an event for the popup window. When should the layer popup be displayed.



5. Save the file in your site

You will need to save the file in your site. You can preview the page in your browser by pressing F12.

Creating a popup window that always stays on top with Use Overlay

Introduction

In this tutorial we will explain how to create a popup window that always stays on top and everything below in on the page is grayed with on overlay if you choose this feature in the Advanced Layer Popup!

You can also specify the level of opacity in percents.

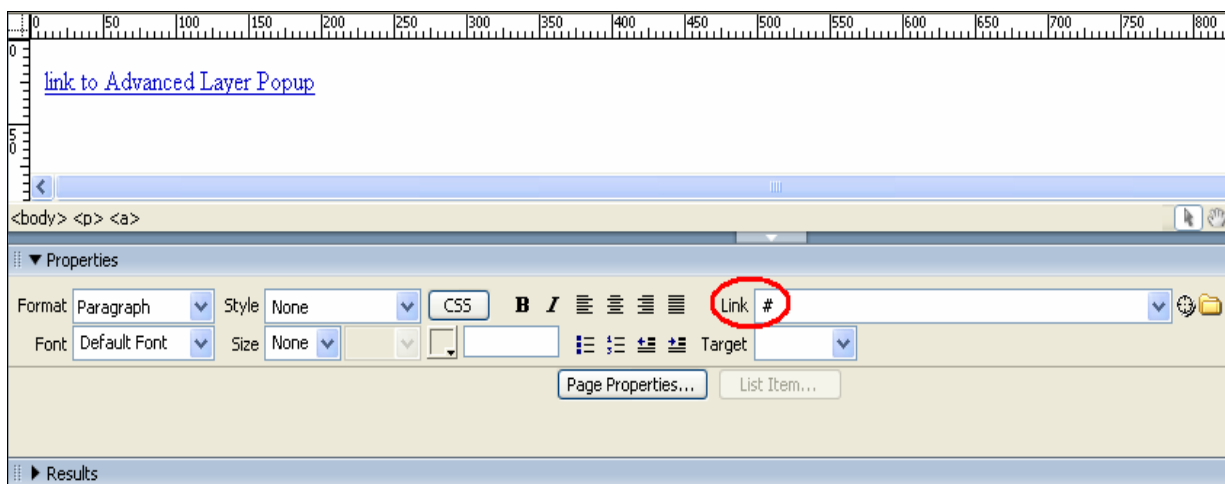
How it works

1. Create a new page.

Open a new page in Dreamweaver 8. Of course an existing one will do well also.

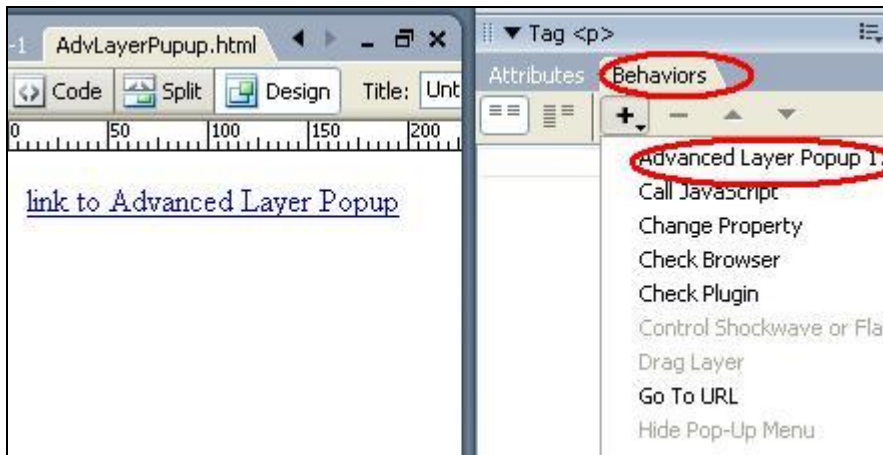
2. Insert a link for the popup window behavior

Put in some text or an image that will serve as a link that the user can click to open the html page in a popup window. When you use text as a link put a # in the Link section of the Properties box.

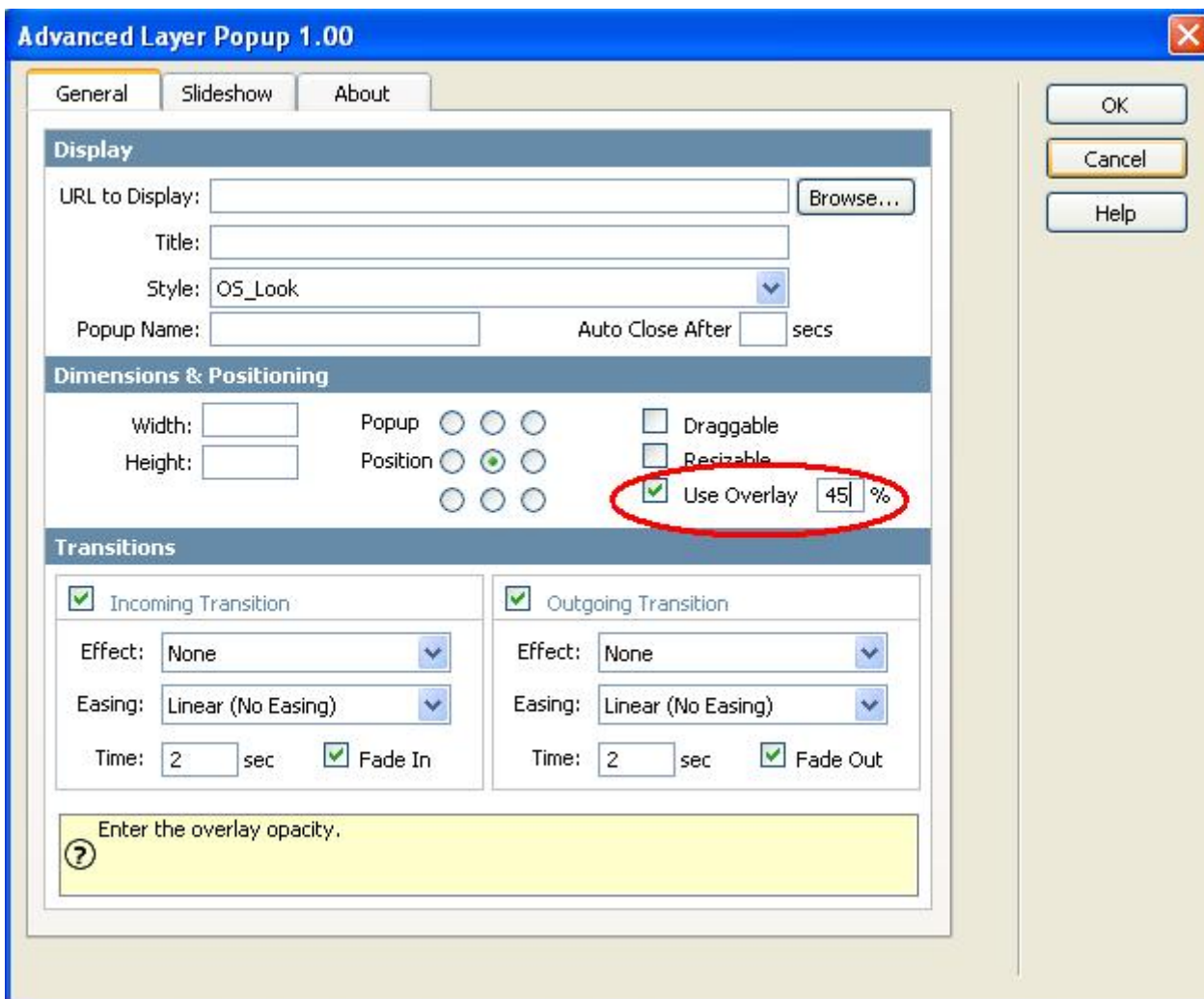


3. Insert the Layer Popup Behavior

Select the text or image link by clicking on it. Choose **Advanced Layer Popup** from the Behaviors panel



This will Open the Advanced Layer Popup.

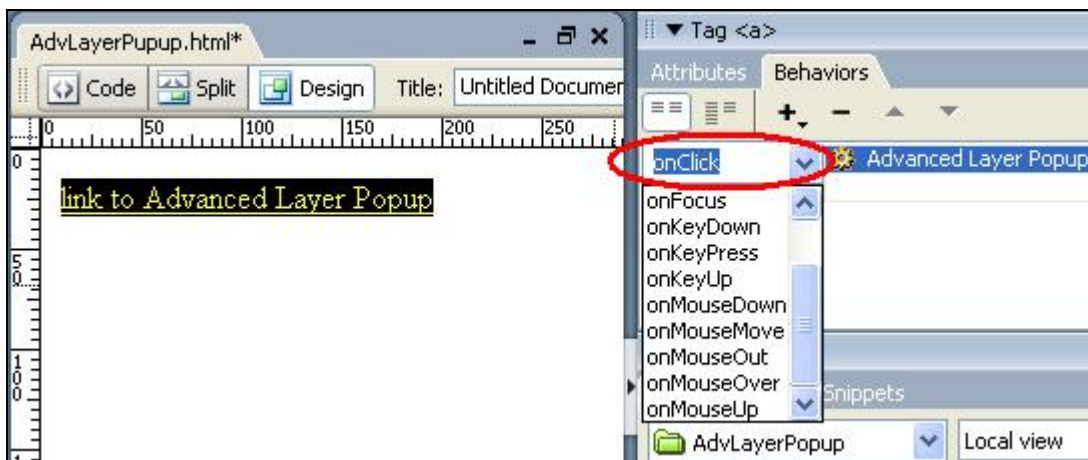


In **Display** you can browse to the image file you would like to display.
Name your window and if you would like the window to close automatically, enter the seconds.

In **Dimensions & Position** the width and height are automatically displayed. You can specify where on the users screen you would like the Layer Popup to appear. In **Transitions** you can specify the incoming and outgoing transition effects. Effects option let's you choose the effect to use for the image slide show. Easing is another option for an effect to choose the shape of the motion. Timer option is to determine the time interval. Fade in option let's you specify whether the motion effect will fade in or not. Click ok.

4. Create the Events for the Popup Window

You will need to create an event for the popup window. When should the layer popup be displayed.



5. Save the file in your site

You will need to save the file in your site. You can preview the page in your browser by pressing F12.

Positioning the popup window anywhere on screen

Introduction

In this tutorial we will explain how to position the popup window anywhere on the user's screen.

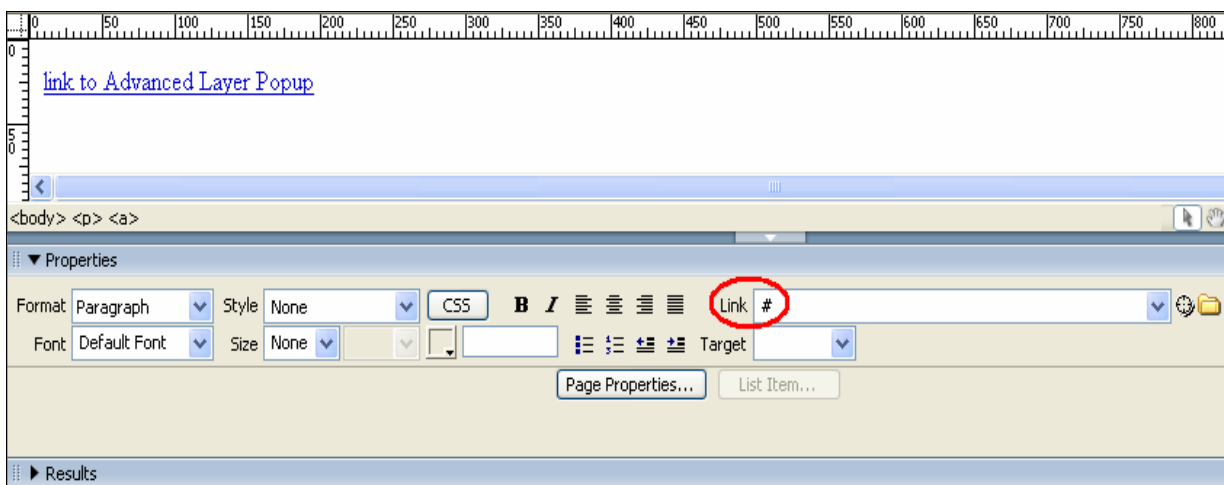
How it works

1. Create a new page.

Open a new page in Dreamweaver 8. Of course an existing one will do well also.

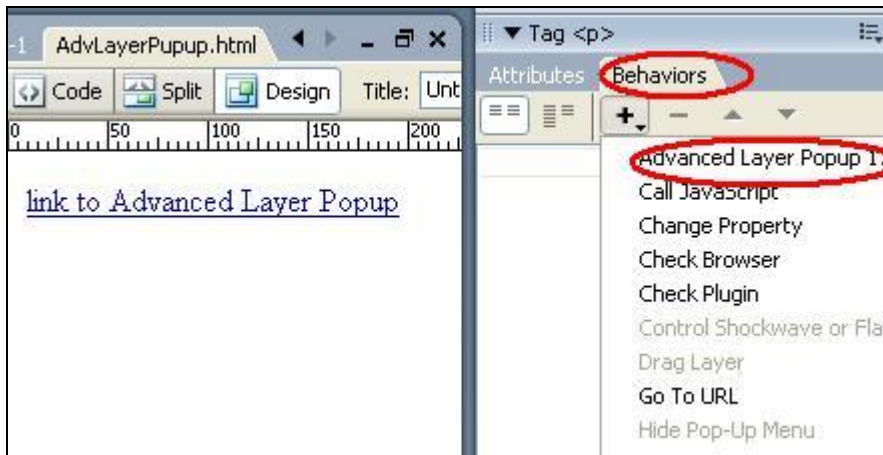
2. Insert a link for the popup window behavior

Put in some text or an image that will serve as a link that the user can click to open the html page in a popup window. When you use text as a link put a # in the Link section of the Properties box.

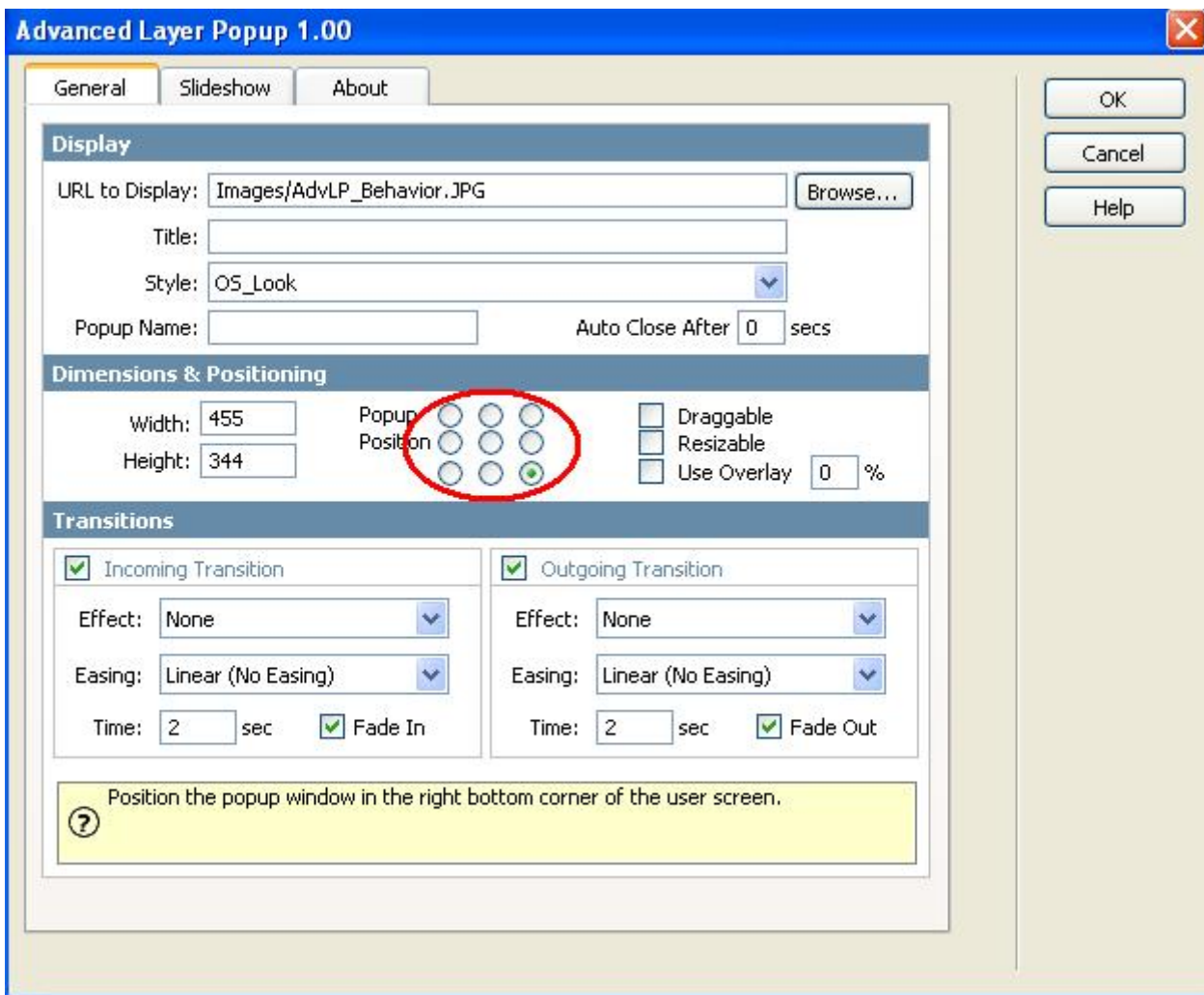


3. Insert the Layer Popup Behavior

Select the text or image link by clicking on it. Choose **Advanced Layer Popup** from the Behaviors panel



This will Open the Advanced Layer Popup.



In **Display** you can browse to the image file you would like to display.
Name your window and if you would like the window to close automatically, enter the seconds.

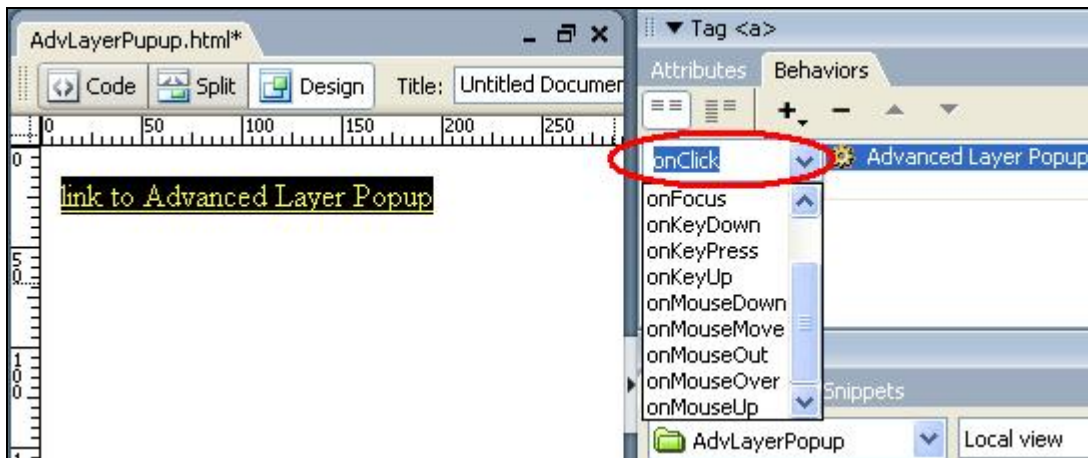
In **Dimensions & Position** the width and height are automatically displayed.
You can specify where on the users screen you would like the Layer Popup to appear.

In **Transitions** you can specify the incoming and outgoing transition effects.
Effects option let's you choose the effect to use for the image slide show.
Easing is another option for an effect to choose the shape of the motion.
Timer option is to determine the time interval.
Fade in option let's you specify whether the motion effect will fade in or not.

Click OK.

4. Create the Events for the Popup Window

You will need to create an event for the popup window. When should the layer popup be displayed.



5. Save the file in your site

You will need to save the file in your site. You can preview the page in your browser by pressing F12.

Making a popup window appear with a slide effect

Introduction

In this tutorial we will explain how to make a popup window appear with a slide effect. You can also add easing to the effect, define time for the motion to last and specify if to fade in or not.

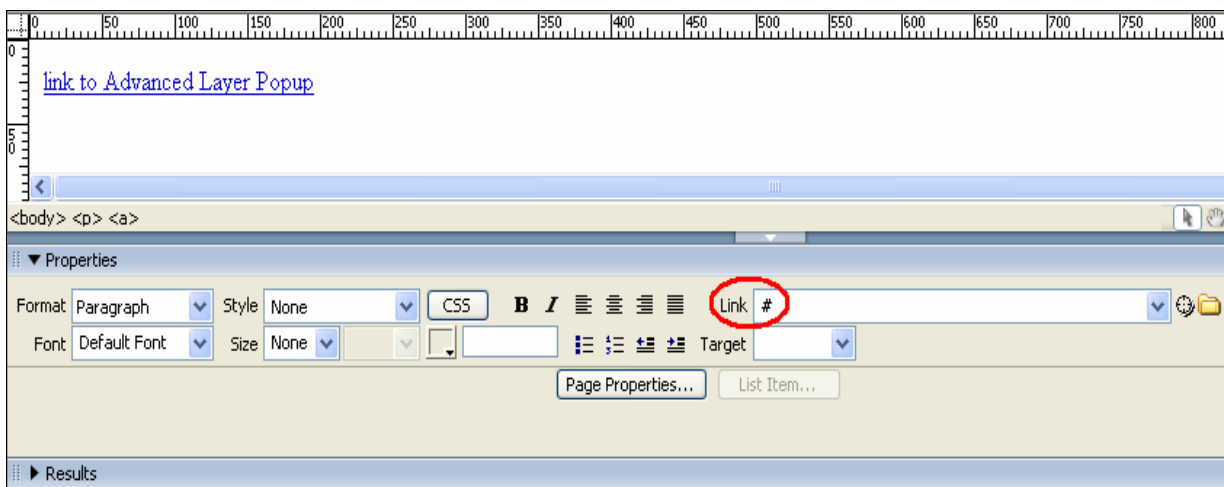
How it works

1. Create a new page.

Open a new page in Dreamweaver 8. Of course an existing one will do well also.

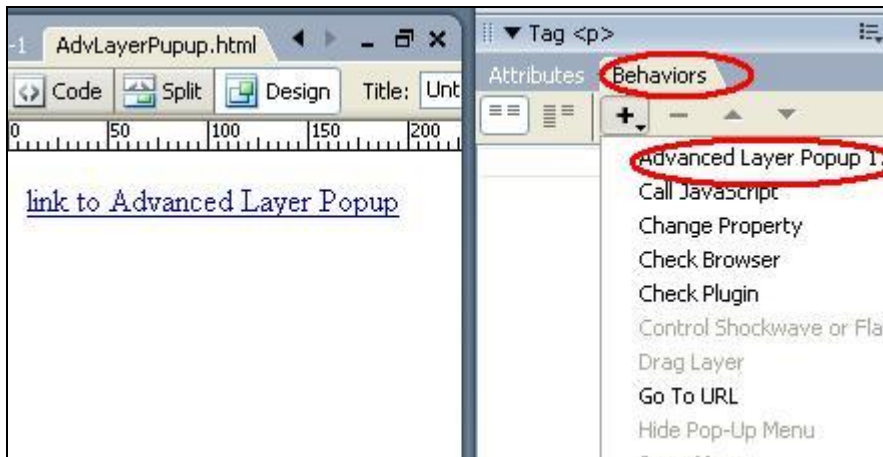
2. Insert a link for the popup window behavior

Put in some text or an image that will serve as a link that the user can click to open the html page in a popup window. When you use text as a link put a # in the Link section of the Properties box.

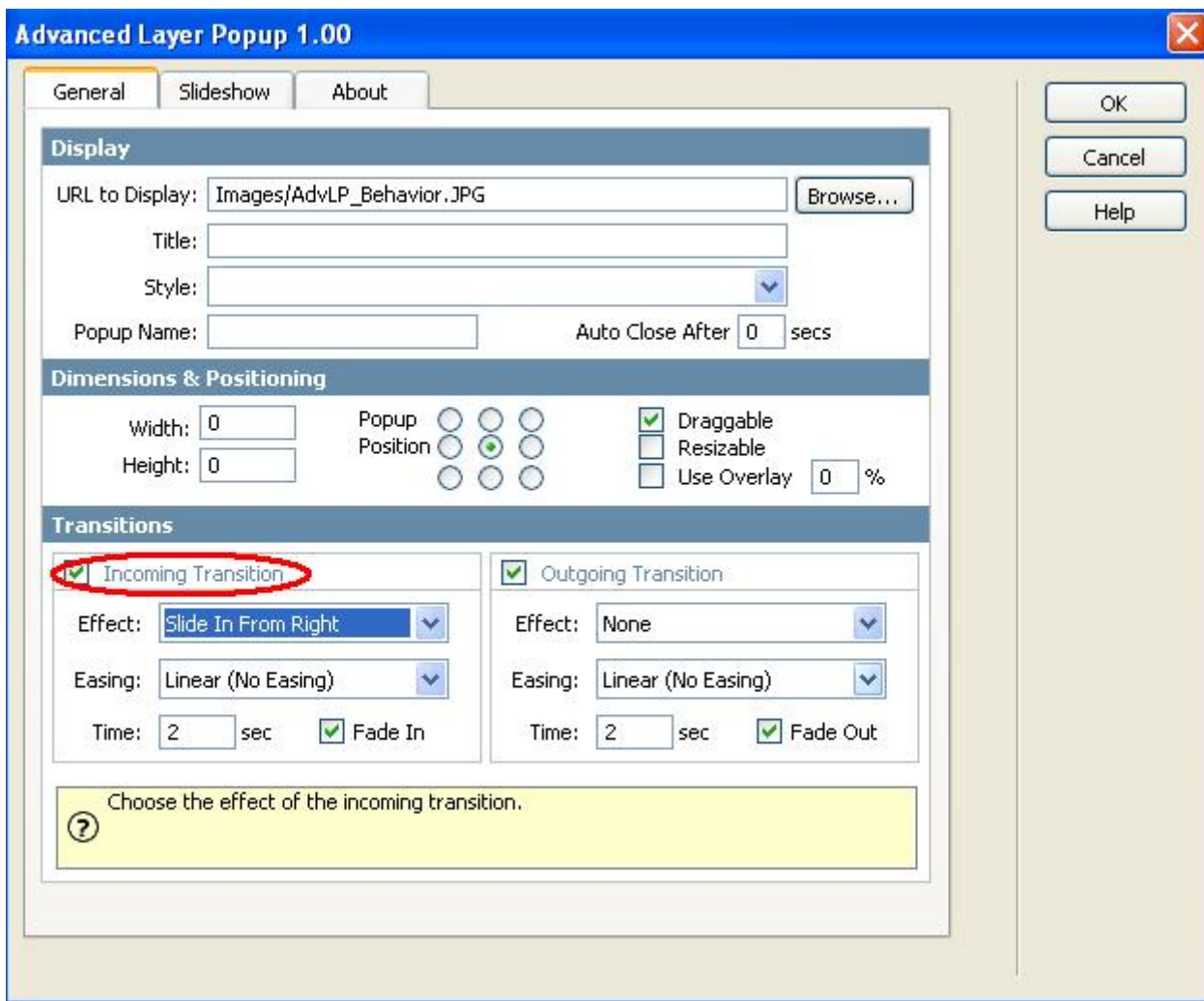


3. Insert the Layer Popup Behavior

Select the text or image link by clicking on it. Choose **Advanced Layer Popup** from the Behaviors panel



This will Open the Advanced Layer Popup.



In **Display** you can browse to the image file you would like to display.
Name your window and if you would like the window to close automatically, enter the seconds.

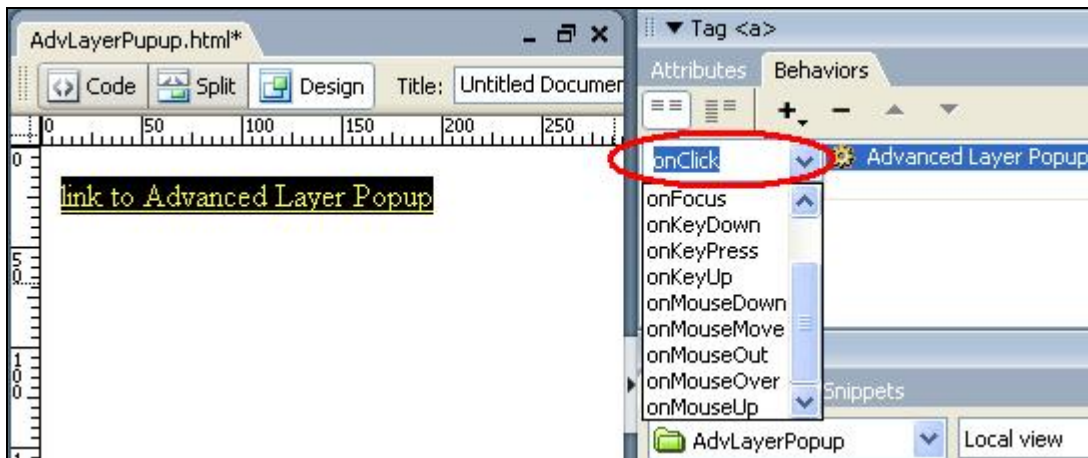
In **Dimensions & Position** the width and height are automatically displayed.
You can specify where on the users screen you would like the Layer Popup to appear.

In **Transitions** you can specify the incoming and outgoing transition effects.
Effects option let's you choose the effect to use for the image slide show.
Easing is another option for an effect to choose the shape of the motion.
Timer option is to determine the time interval.
Fade in option let's you specify whether the motion effect will fade in or not.

Click OK.

4. Create the Events for the Popup Window

You will need to create an event for the popup window. When should the layer popup be displayed.



5. Save the file in your site

You will need to save the file in your site. You can preview the page in your browser by pressing F12.

Making a popup window disappear with a slide effect

Introduction

In this tutorial we will explain how to make a popup window disappear with a slide effect. You can also add easing to the effect, define time for the motion to last and specify if to fade in or not.

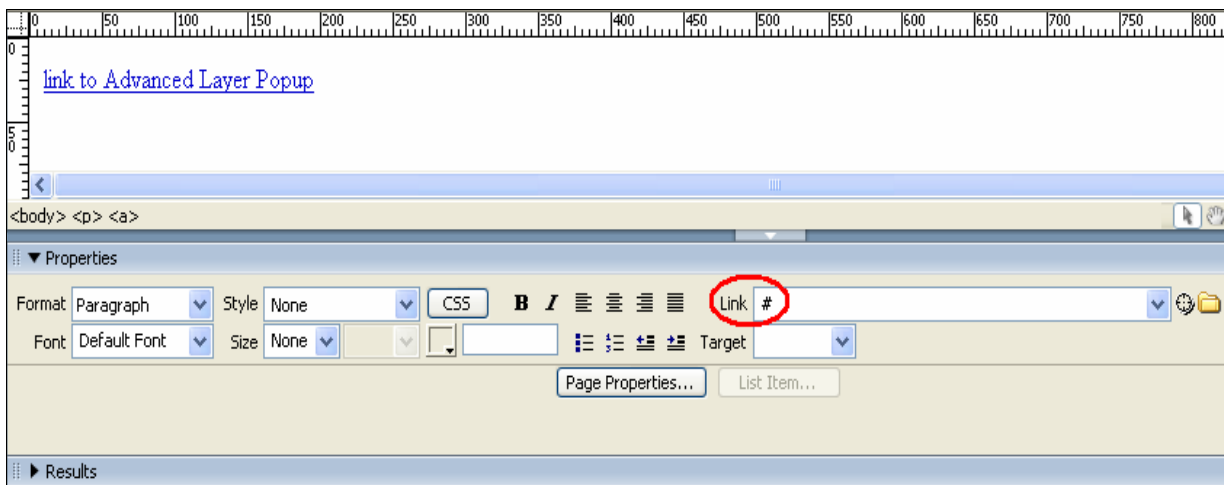
How it works

1. Create a new page.

Open a new page in Dreamweaver 8. Of course an existing one will do well also.

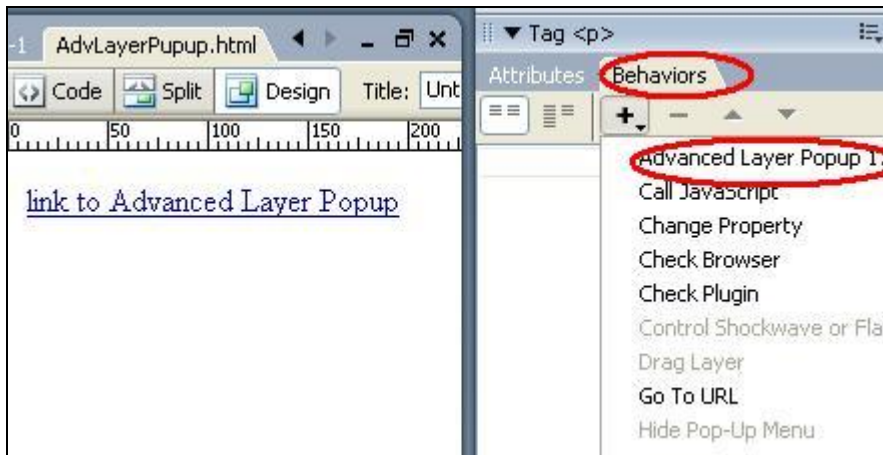
2. Insert a link for the popup window behavior

Put in some text or an image that will serve as a link that the user can click to open the html page in a popup window. When you use text as a link put a # in the Link section of the Properties box.

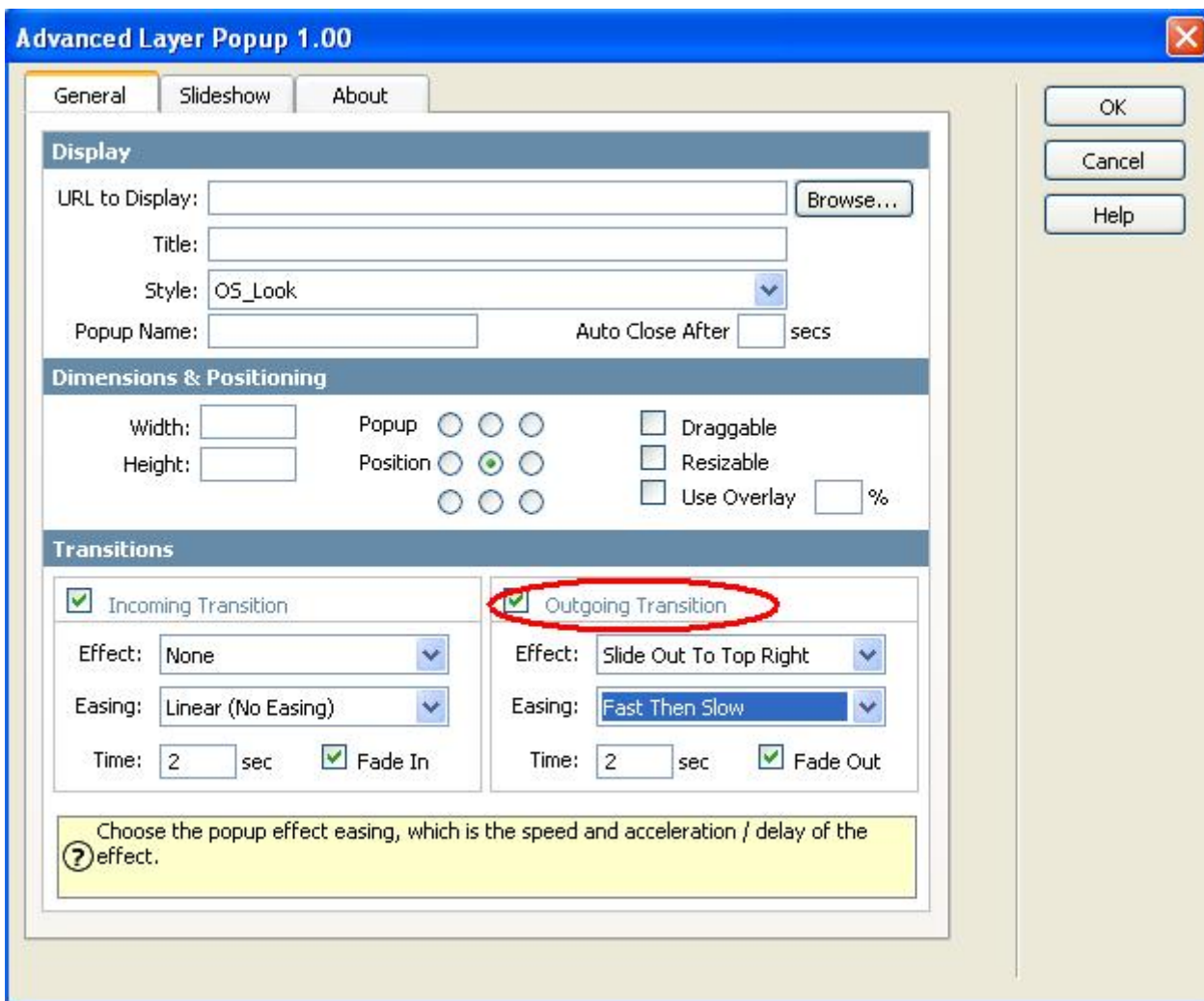


3. Insert the Layer Popup Behavior

Select the text or image link by clicking on it. Choose **Advanced Layer Popup** from the Behaviors panel



This will Open the Advanced Layer Popup.



In **Display** you can browse to the image file you would like to display. Name your window and if you would like the window to close automatically, enter the seconds.

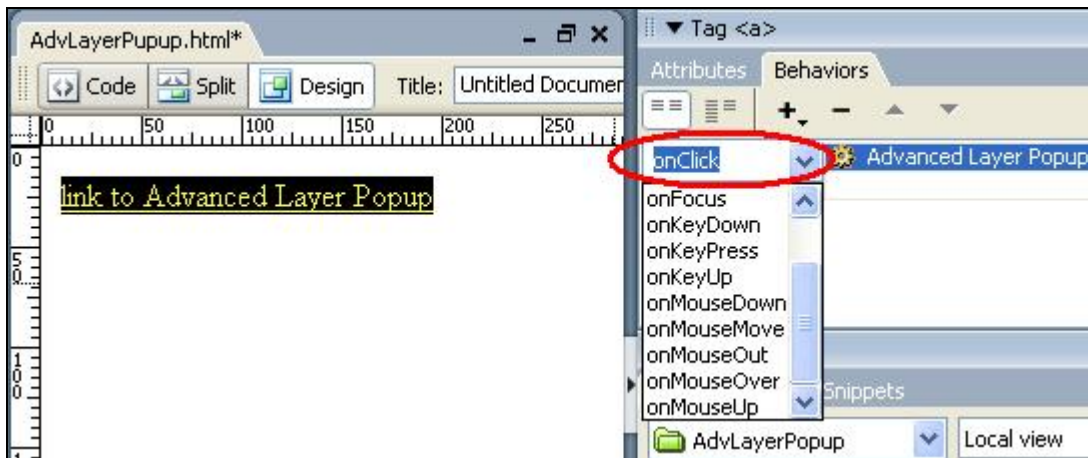
In **Dimensions & Position** the width and height are automatically displayed.
You can specify where on the users screen you would like the Layer Popup to appear.

In **Transitions** you can specify the incoming and outgoing transition effects.
Effects option let's you choose the effect to use for the image slide show.
Easing is another option for an effect to choose the shape of the motion.
Timer option is to determine the time interval.
Fade in option let's you specify whether the motion effect will fade in or not.

Click OK.

4. Create the Events for the Popup Window

You will need to create an event for the popup window. When should the layer popup be displayed.



5. Save the file in your site

You will need to save the file in your site. You can preview the page in your browser by pressing F12.

Creating a slideshow with images

Introduction

In this tutorial we will explain how to create a slideshow containing images.

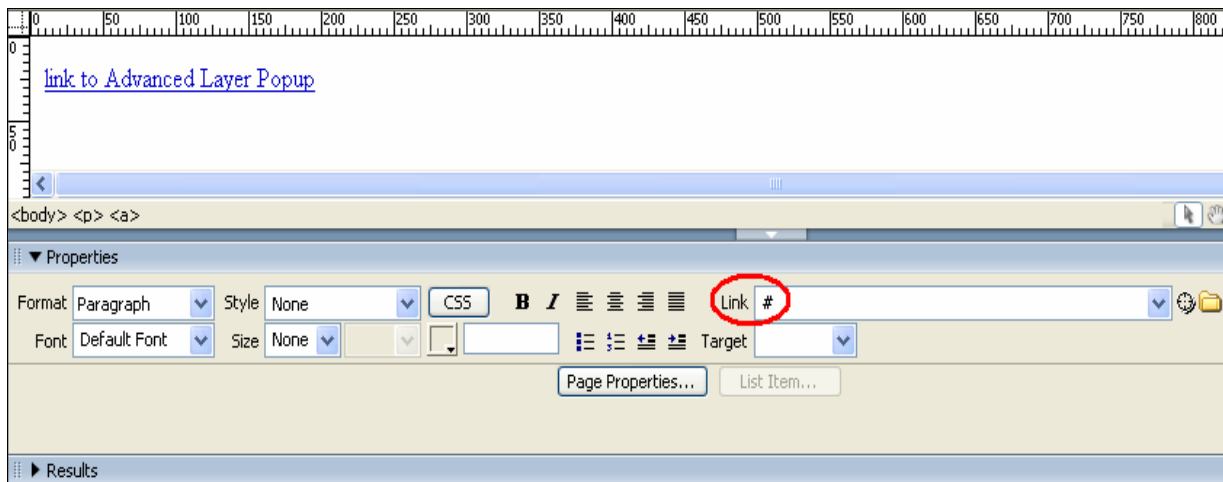
How it works

1. Create a new page.

Open a new page in Dreamweaver 8. Of course an existing one will do well also.

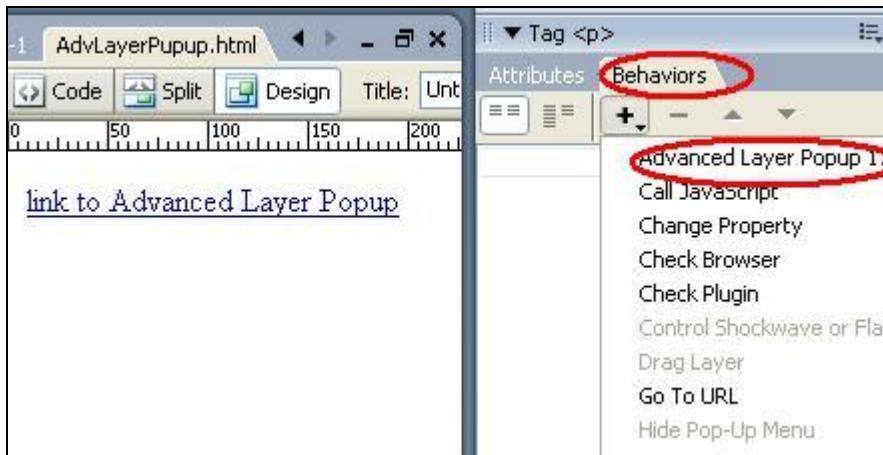
2. Insert a link for the popup window behavior

Put in some text or an image that will serve as a link that the user can click to open the html page in a popup window. When you use text as a link put a # in the Link section of the Properties box.

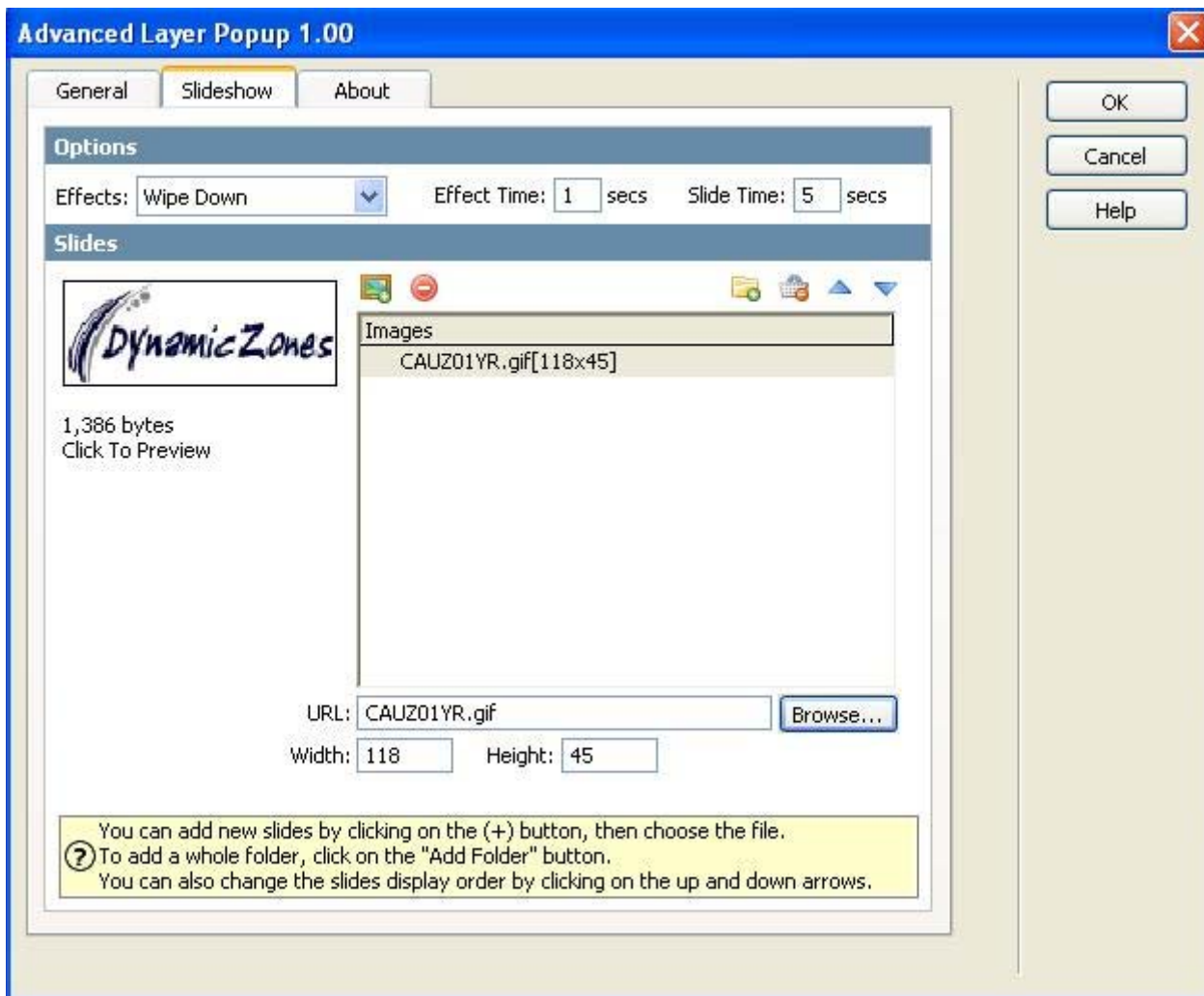


3. Insert the Layer Popup Behavior

Select the text or image link by clicking on it. Choose **Advanced Layer Popup** from the Behaviors panel



This will Open the Advanced Layer Popup.
Select the slideshow tab.



You can choose an effect from **Effects** for the transitions between the images.
You can specify the time of the effect in the **Effect Time** box and the time of slide in the **Slide Time** box
or let the user click on the slides to go to the next slide.

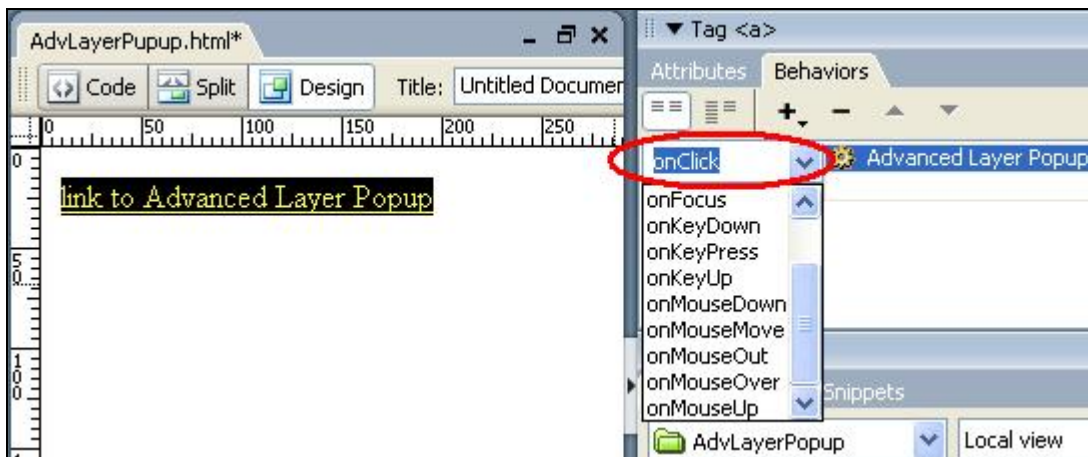
You can add the images one by one by clicking on the (+) icon and browse to the file or delete them with the (-) icon. The height and width are automatically adjusted according to the size of the images. You can see a preview of the images on the left side.

If you have created a folder of images you can add the whole folder at once by clicking on **Add Folder icon**.

You can change the order of the images by clicking the up and down arrows.

4. Create the Events for the Popup Window

You will need to create an event for the popup window. When should the layer popup be displayed.



5. Save the file in your site

You will need to save the file in your site. You can preview the page in your browser by pressing F12.

Frequently asked questions

When to use Advanced Layer Popup

Q: When should I use Advanced Layer Popup

A: Advanced Open Layer Popup is a dreamweaver behavior that enables you to create a popup window to open a new url. The window can contain images, text, flash or quick movies. Examples are a poll, advertising, slideshow, news, etc.

Creating link to a popup window

Q: How do I link to a popup window so that you can see the hand when you mouseover?

A: Before you apply the Open Layer Popup behavior make either the text or the image a link by placing # in the link box in the properties palette.

What can you use in a popup window

Q: Can I use only images in the popup window?

A: Popups aren't for pictures only. Anything that can be inserted into an HTML page can also be implemented into a new window. Text, Flash, Quick-time movies, Windows Media Player, etc.

What is a behavior in Dreamweaver?

Q: What is a behavior in Dreamweaver?

A: A Behavior is some Action that is associated with some Event. Since different objects have different behaviors that can be associated with them, the list of actions varies depending on what object tag is currently selected.