

Table of contents

Table of contents	1
About DMXzone Uniform.....	2
The Basics: Basic Usage of DMXzone Uniform	11
Advanced: Updating DMXzone Uniform Elements on Demand	19
Reference: DMXzone Uniform Designs.....	26
Video: Basic Usage of DMXzone Uniform.....	29
Video: Updating DMXzone Uniform Elements on Demand	29

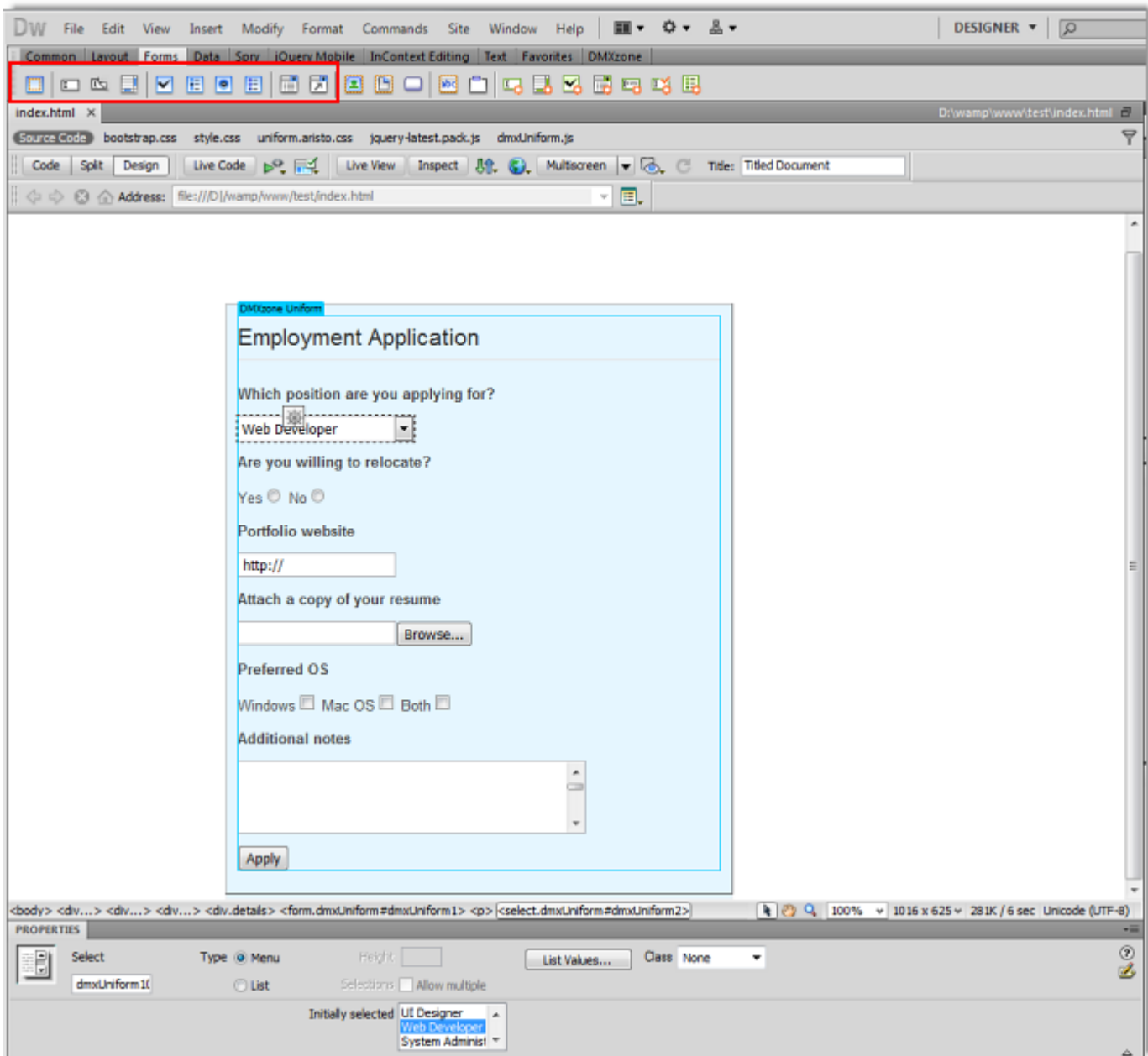
About DMXzone Uniform



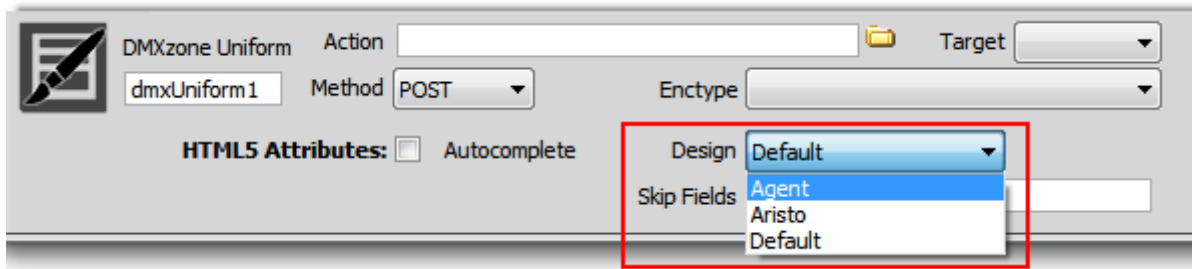
You want your forms to look exactly the same in any browser? Deliver amazing uniform styling to all your form elements. Finally with the [DMXzone Uniform](#) extension you can achieve exactly the same form styling in all browsers. With this great tool you can style any drop down menu, file field, radio button, checkbox and input, directly in Dreamweaver. Change the most commonly used form elements with custom designed ones for greater user experience. Choose one of the 3 stunning designs or design your own by editing the CSS. All the form elements in the [DMXzone Uniform](#) area will be automatically styled and will look exactly the same everywhere! It works perfectly with your real form elements to ensure accessibility and compatibility.

Features in Detail

- **Deliver amazing uniform styling to all your form elements** - Finally with the **DMXzone Uniform** extension you can achieve exactly the same form styling in all browsers.



- **Choose one of the supplied designs** - Choose one of the 3 stunning designs or design your own by editing the CSS. All the form elements in the **DMXzone Uniform** area will be automatically styled and will look exactly the same in all browsers!



- Default

Employment Application

Which position are you applying for?

Web Developer

Are you willing to relocate?

Yes No

Portfolio website

http://

Attach a copy of your resume

No file selected Choose File

Preferred OS

Windows Mac OS Both

Additional notes

APPLY

- **Agent**

Employment Application

Which position are you applying for?

Office Manager

Are you willing to relocate?

Yes No

Portfolio website

http://

Attach a copy of your resume

No file selected **Choose File**

Preferred OS

Windows Mac OS Both

Additional notes

APPLY

- Aristo

Employment Application

Which position are you applying for?

Office Manager

Are you willing to relocate?

Yes No

Portfolio website

Attach a copy of your resume

No file selected

Preferred OS

Windows Mac OS Both

Additional notes

- **Specified action** - Choose where to submit your form, on the same page or specify other by adding the URL to it.

DMXzone Uniform

Action

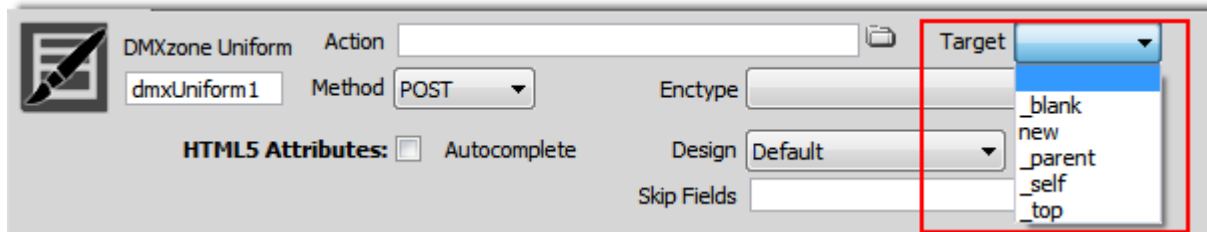
Target

Method
Enctype

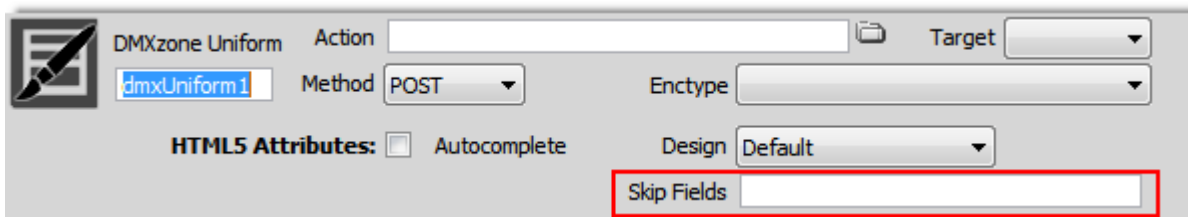
HTML5 Attributes: Autocomplete
Design

Skip Fields

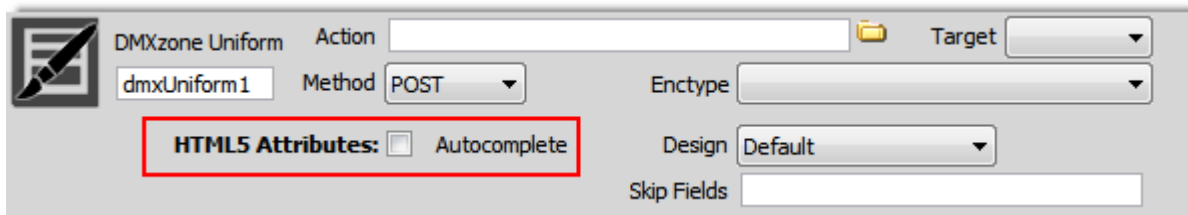
- **Set target** - Choose how to open your Uniform upon submit.



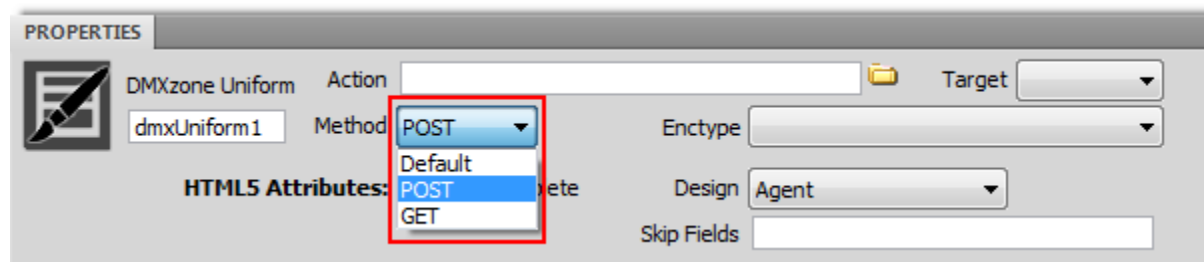
- **Skip fields** - Choose which elements of your form to be excluded from the selected design of the Uniform.



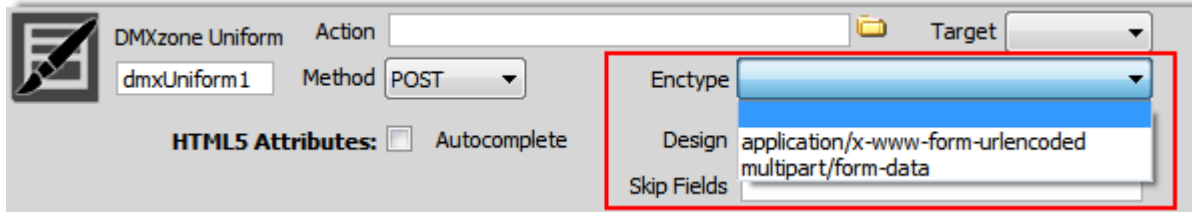
- **HTML5 Attributes** - Specifies whether a form should have autocomplete on or off (**Note:** Your page must be HTML5).



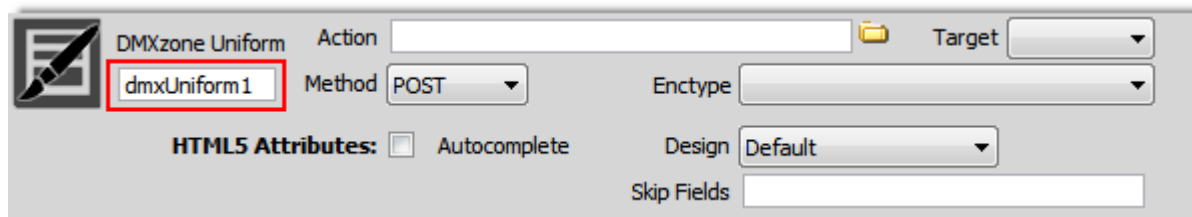
- **Choose form method** - Choose how to send the data - as URL variables (with method="get") or as HTTP post transaction (with method="post"). The "get" method has a limit to how much data you can place in a URL (it varies between browsers, and also between servers). The "post" method requires more processing on the server but has no size limitation.



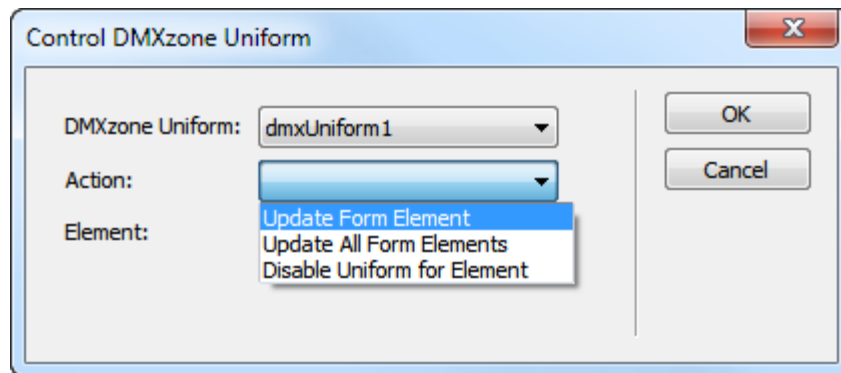
- **Pick up enctype method** - The enctype attribute specifies how the form-data should be encoded when submitting it to the server (**Note:** The enctype attribute can be used only if method="post").



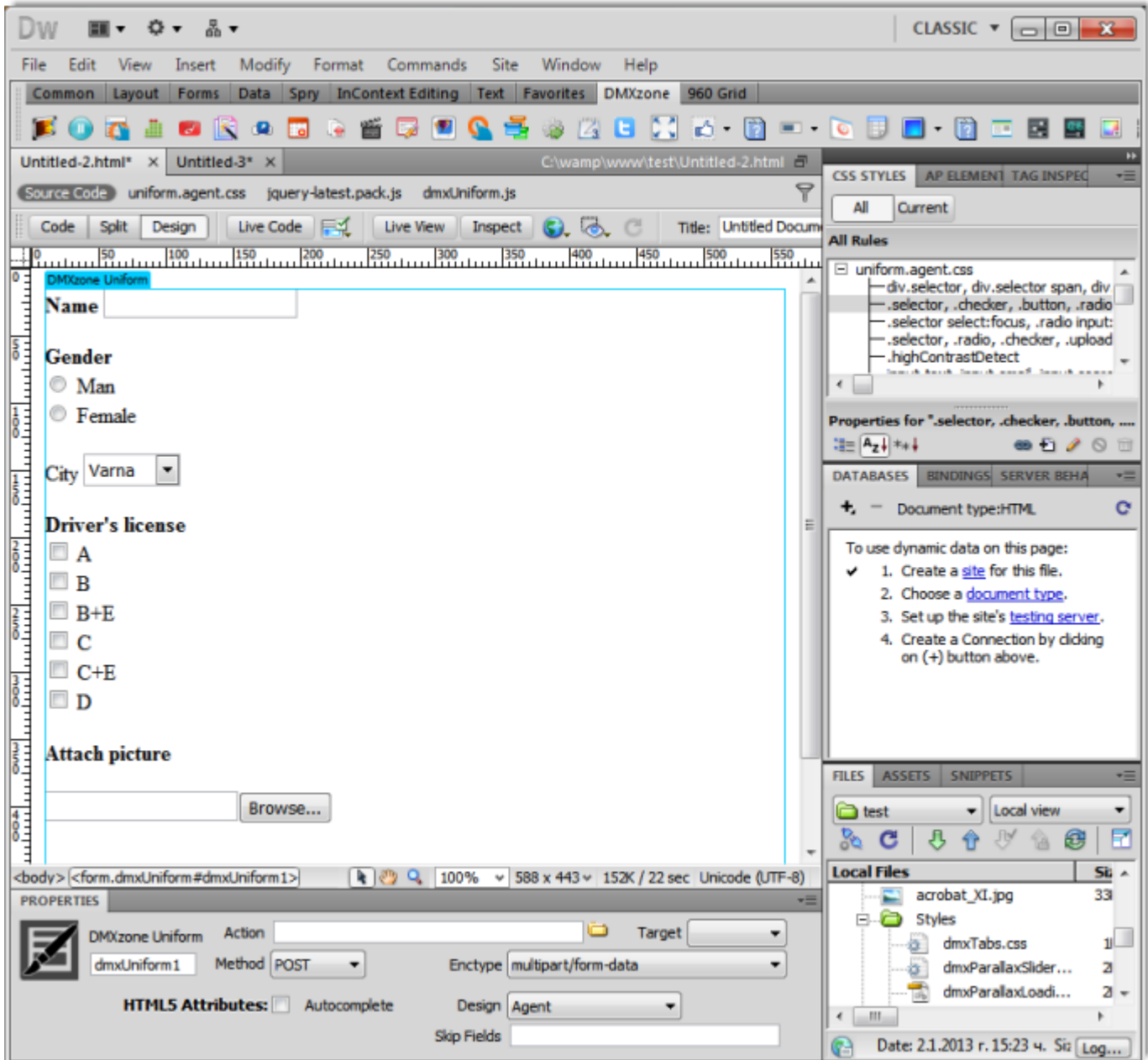
- **ID name** - Set the ID for your Uniform.



- **Fully controllable by behaviors** - Update the fields style and behavior on demand.



- **Great Dreamweaver design preview** - You can preview your Uniform directly in Dreamweaver and see how it looks like.



Before you begin

Make sure to setup your site in Dreamweaver first before creating a page. If you don't know how to do that please [read this](#).

Installing the extension

Read the tutorial at <http://www.dmxzone.com/go/4671/how-to-install-extensions-from-dmxzone/>

Login, download the product, and look up your serial at <http://www.dmxzone.com/user/products>

Get the latest extension manager from Adobe at http://www.adobe.com/exchange/em_download/

Open the .mxp file (the extension manager should start-up) and install the extension.

If you experience any problems contact our Live Support!

The Basics: Basic Usage of DMXzone Uniform

In this tutorial we will show you how to insert [DMXzone Uniform](#) on your page.

*You can also check out the [video](#).

Which position are you applying for?

Web Developer ▾

Are you willing to relocate?

Yes No

Portfolio website

http://

Attach a copy of your resume

No file selected Choose File

Preferred OS

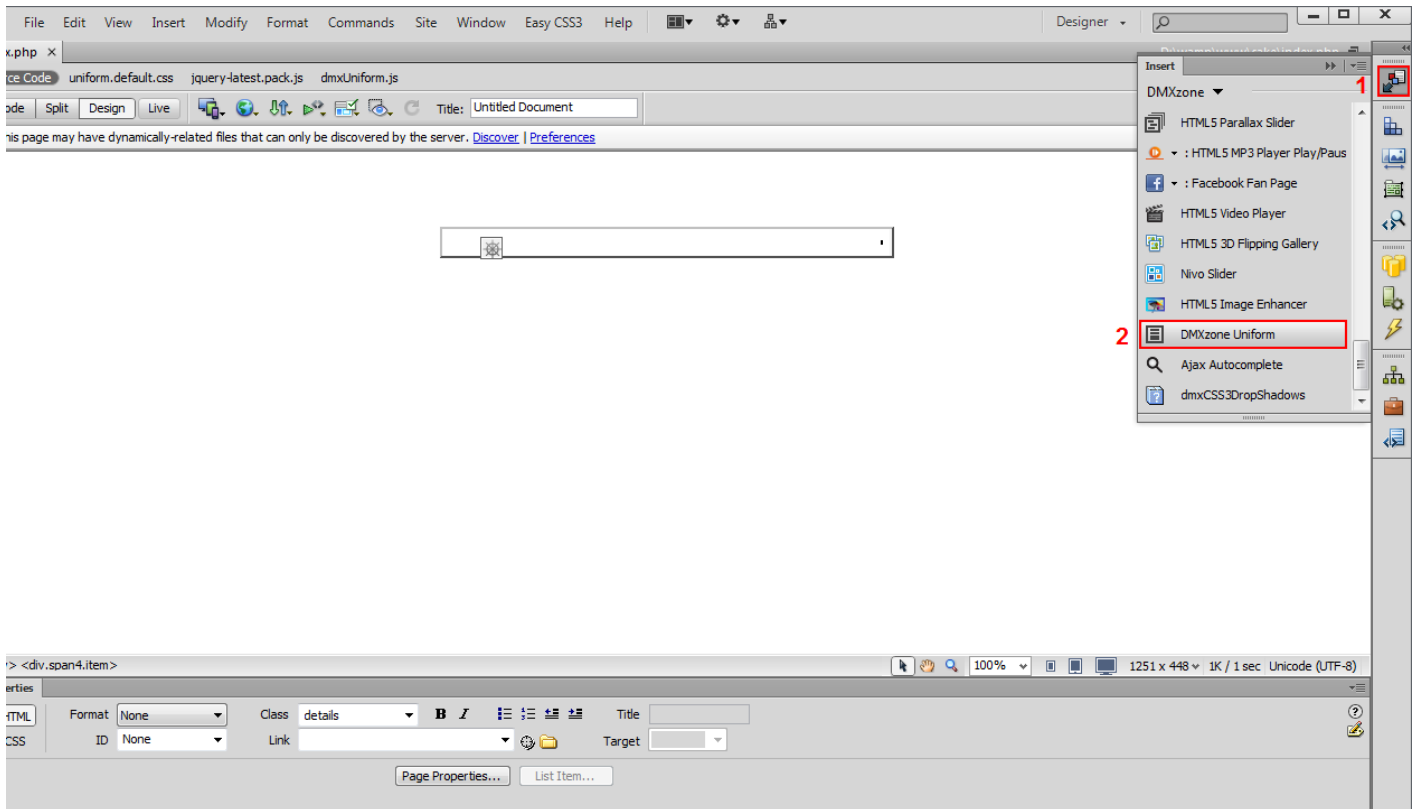
Windows Mac OS Both

Additional notes

APPLY

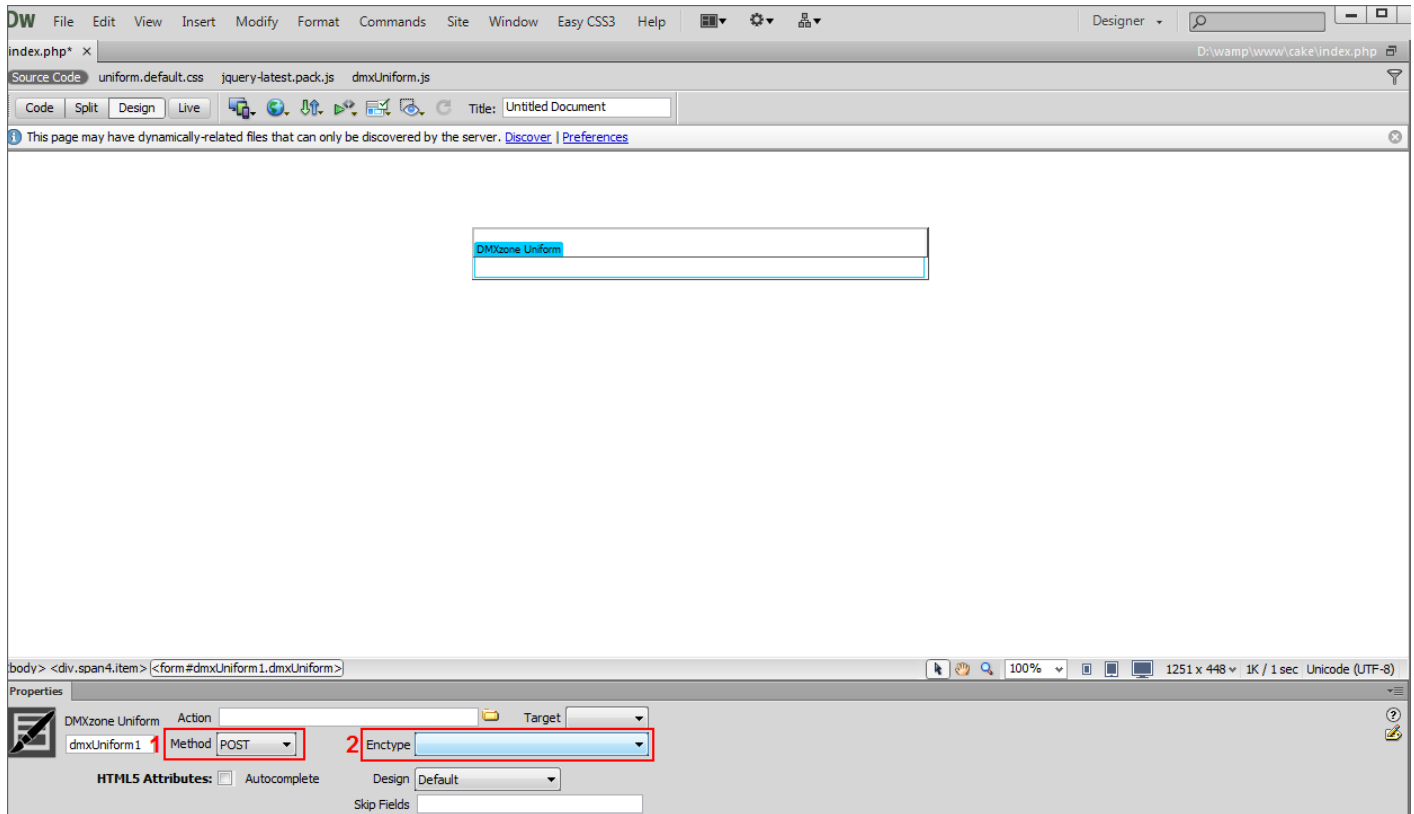
How to do it

1. For this tutorial we've inserted an empty DIV container on our page. Click the **insert button (1)** in order to **open the DMXzone Uniform (2)**.

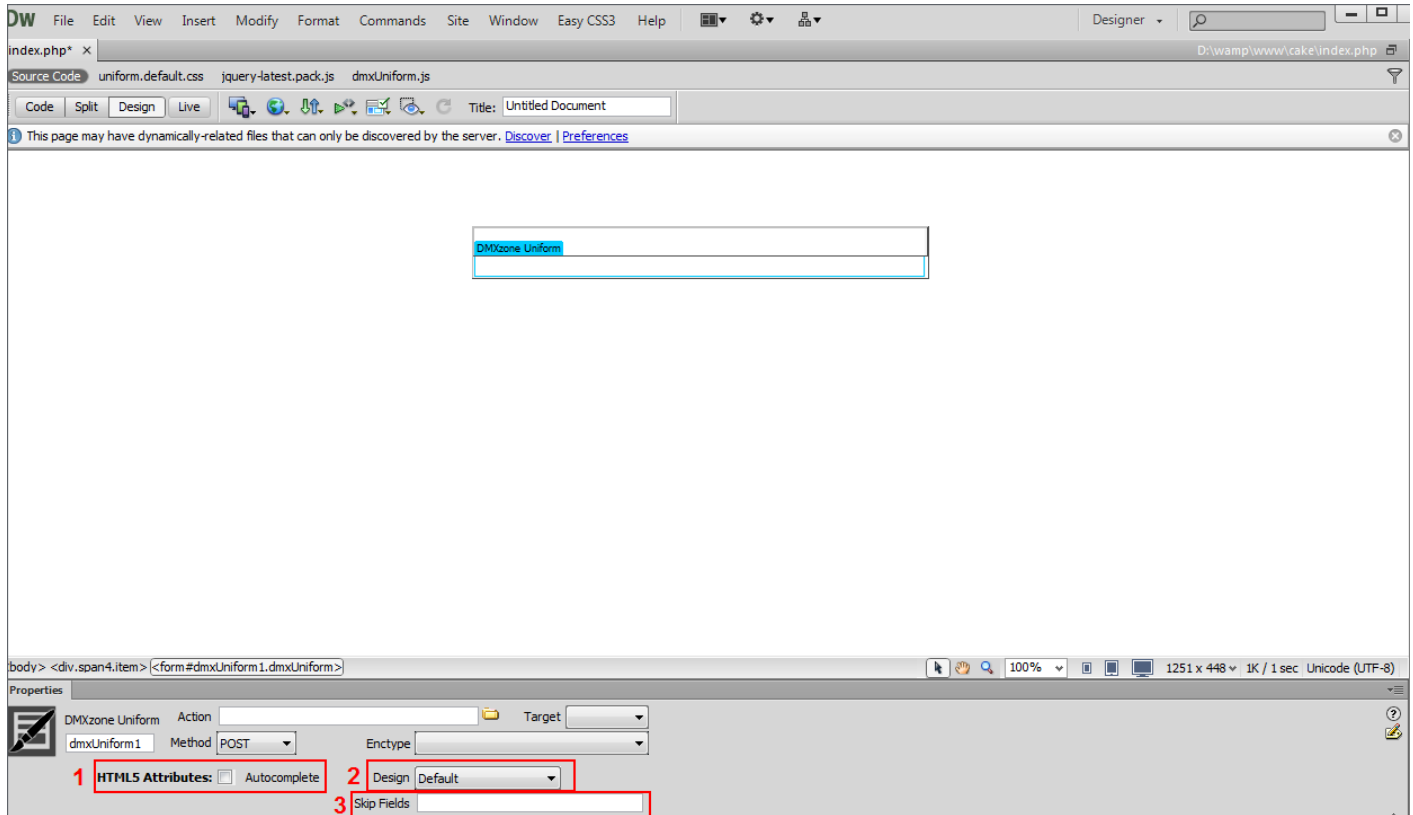


- We will use the **Properties Inspector** in order to adjust the **DMXzone Uniform** settings. You can select an action and a target. For now, we will use **POST as our method (1)** and leave the **enctype field empty (2)**.

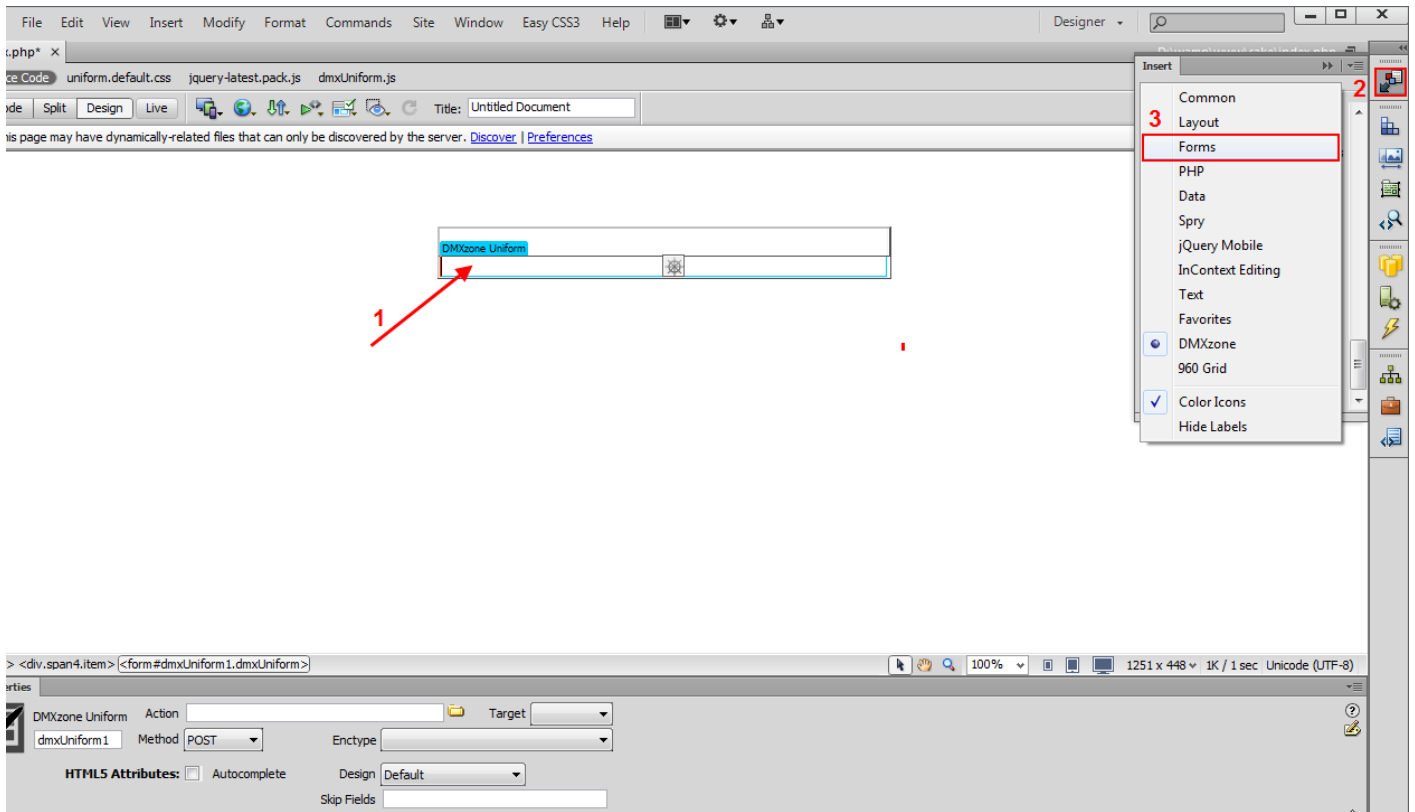
*Note: The enctype attribute can only be used when the form method is POST.



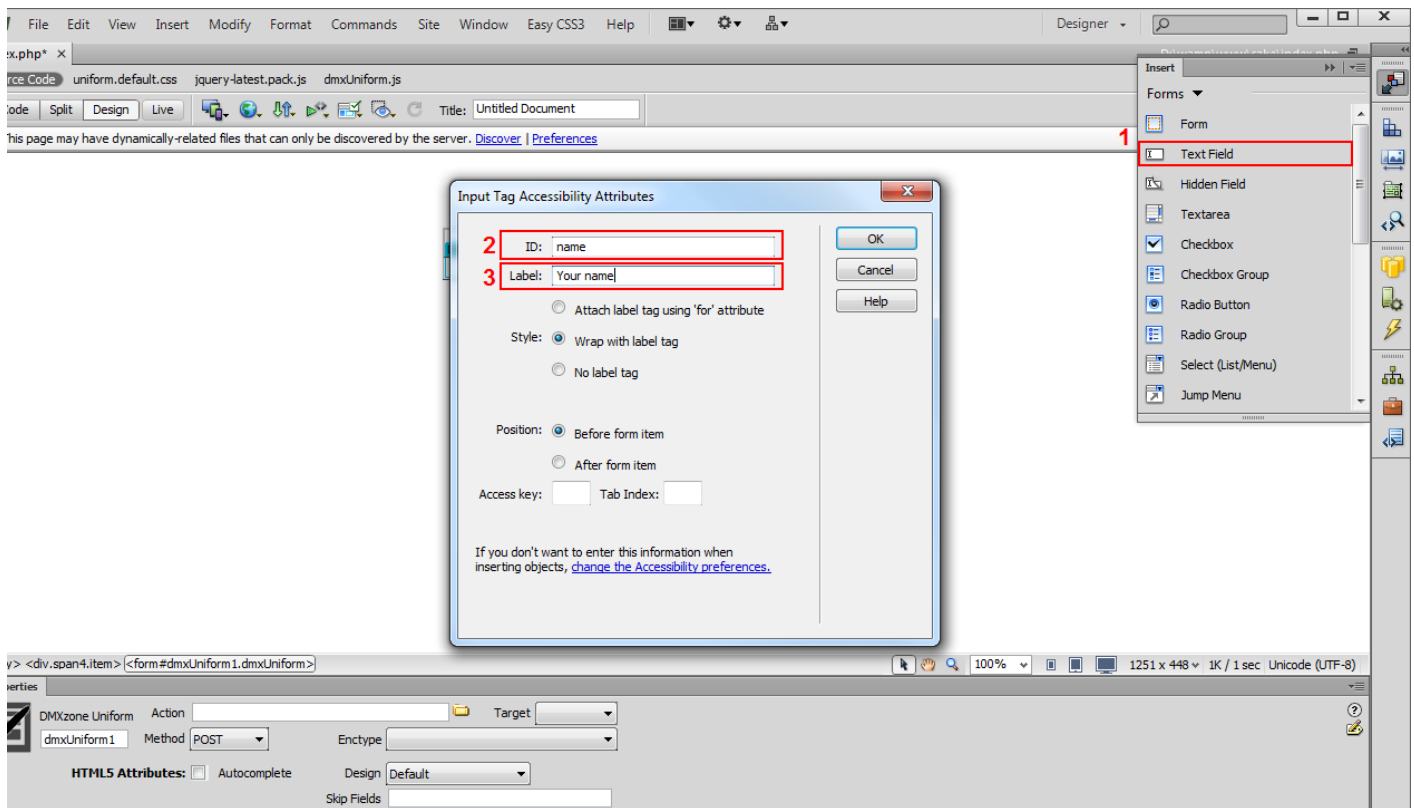
3. You can enable or disable the **HTML5 autocomplete attribute (1)**. For our form we'll use the **default predefined design (2)**. You can skip styling any of your form fields, simply enter a comma separated **list of CSS selectors (3)**.



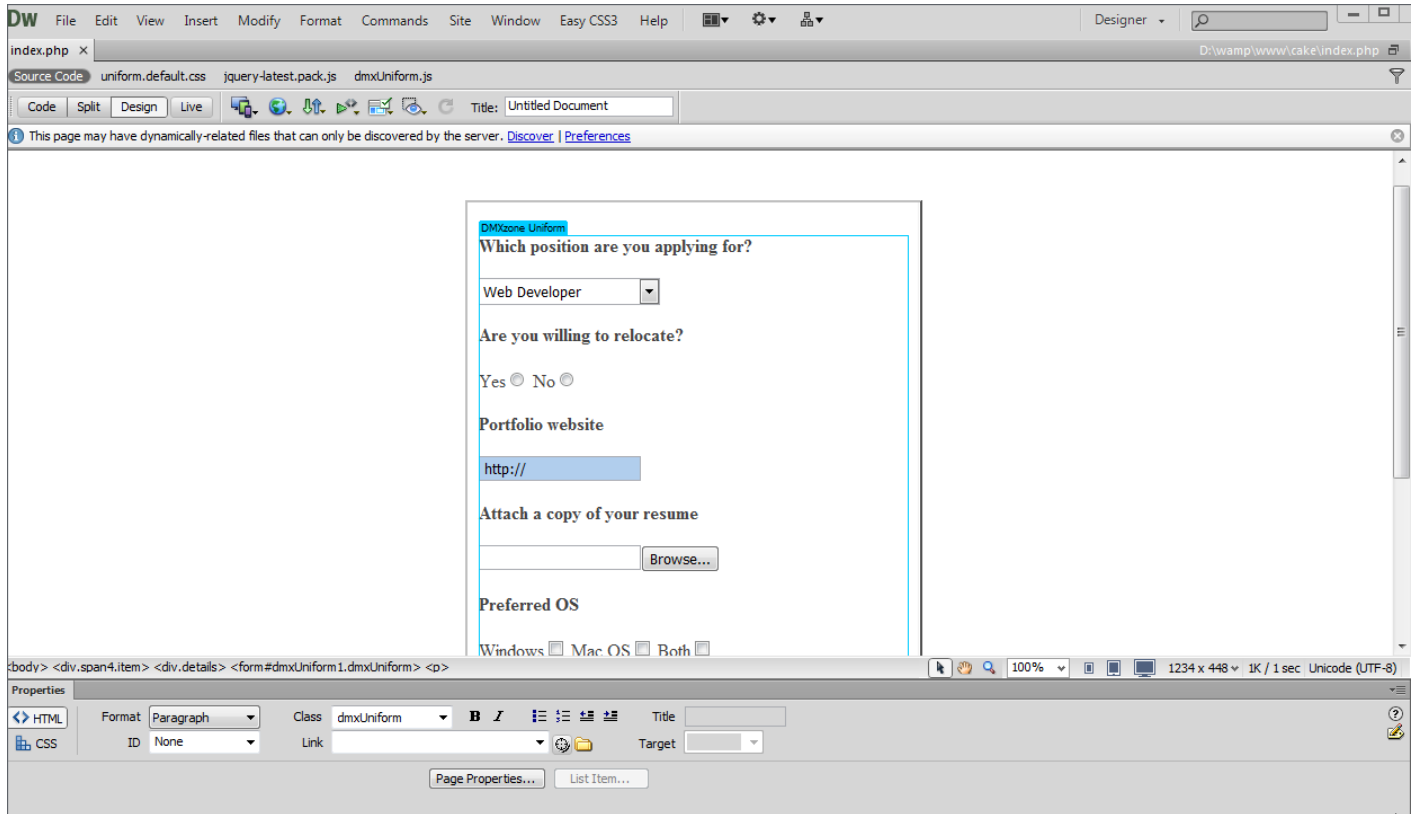
- Now, we're going to add form fields into our **DMXzone Uniform**. Click inside the **DMXzone Uniform region (1)**, click the **insert button (2)** and select the **forms menu item (3)**.



5. Once you click the **text field (1)**, the input tag accessibility attributes window opens. Add an **ID (2)** and an optional **label to this field (3)**. When you're done, click the OK button.



- You can add as many fields as you need inside the **DMXzone Uniform** region - it is as easy as creating a standard Dreamweaver form.



7. Now you can save your work and preview the result in the browser.

Which position are you applying for?

Web Developer ▾

Are you willing to relocate?

Yes No

Portfolio website

http://

Attach a copy of your resume

No file selected Choose File

Preferred OS

Windows Mac OS Both

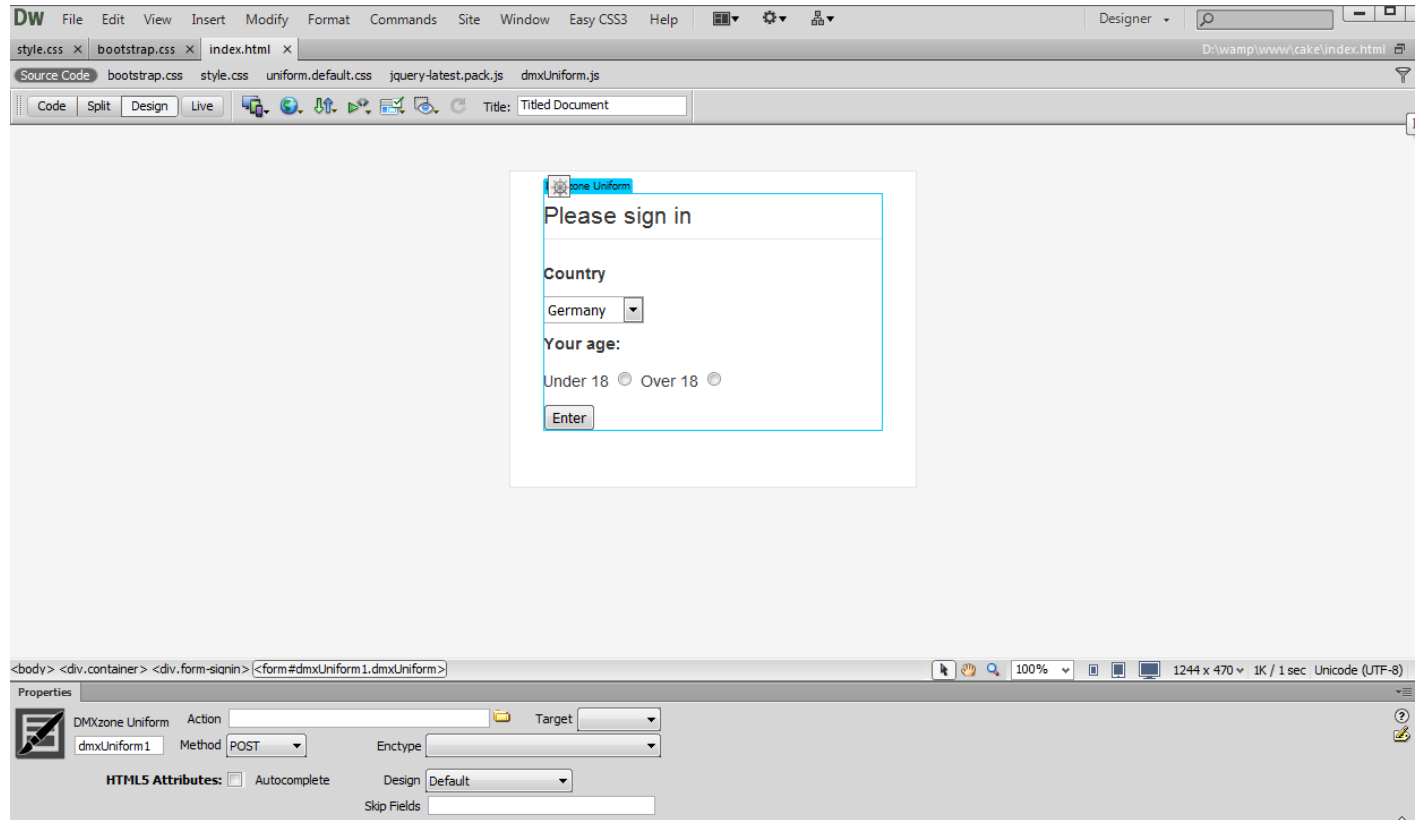
Additional notes

APPLY

Advanced: Updating DMXzone Uniform Elements on Demand

In this tutorial we will show you how to update [DMXzone Uniform](#) elements on demand using Dreamweaver Control Behaviors.

*You can also check out the [video](#).

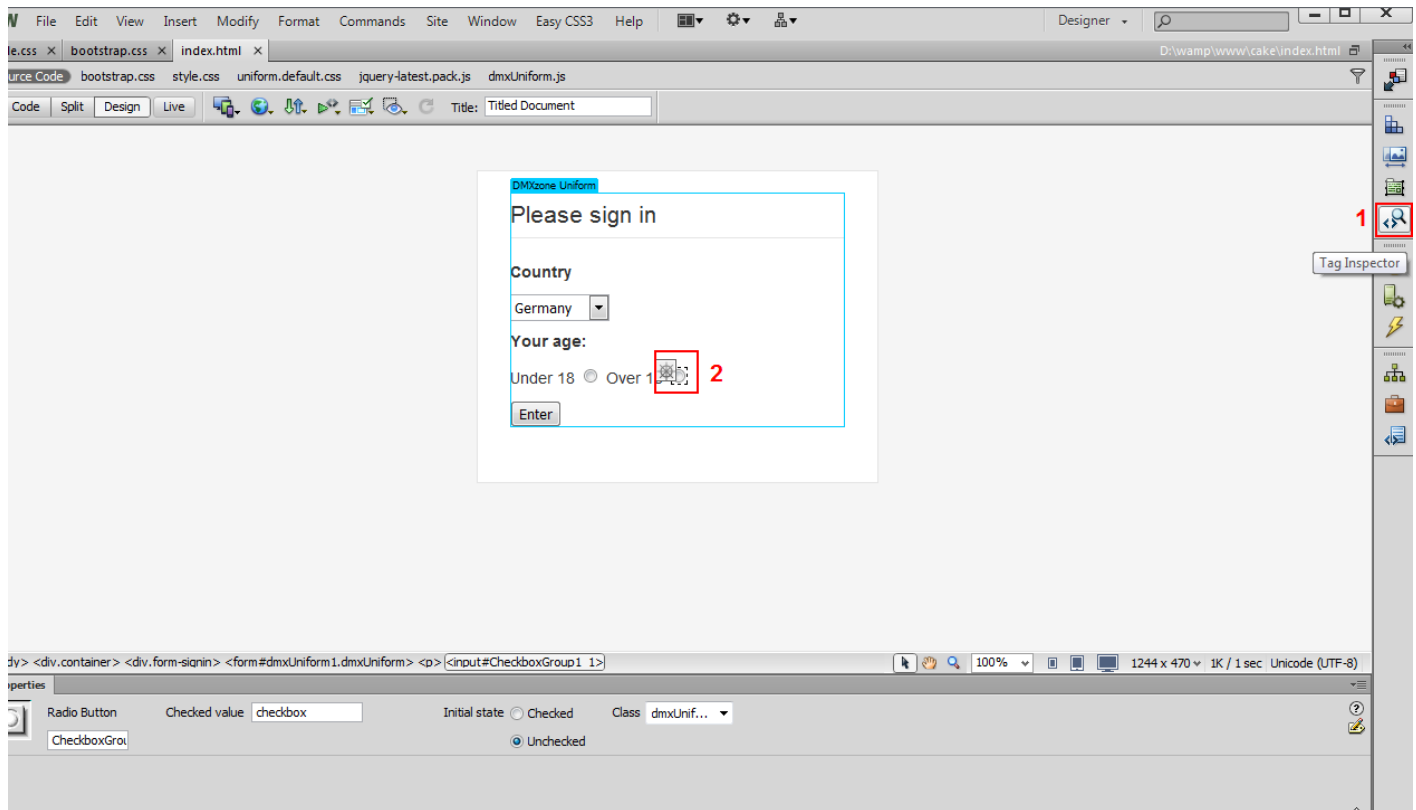


How to do it

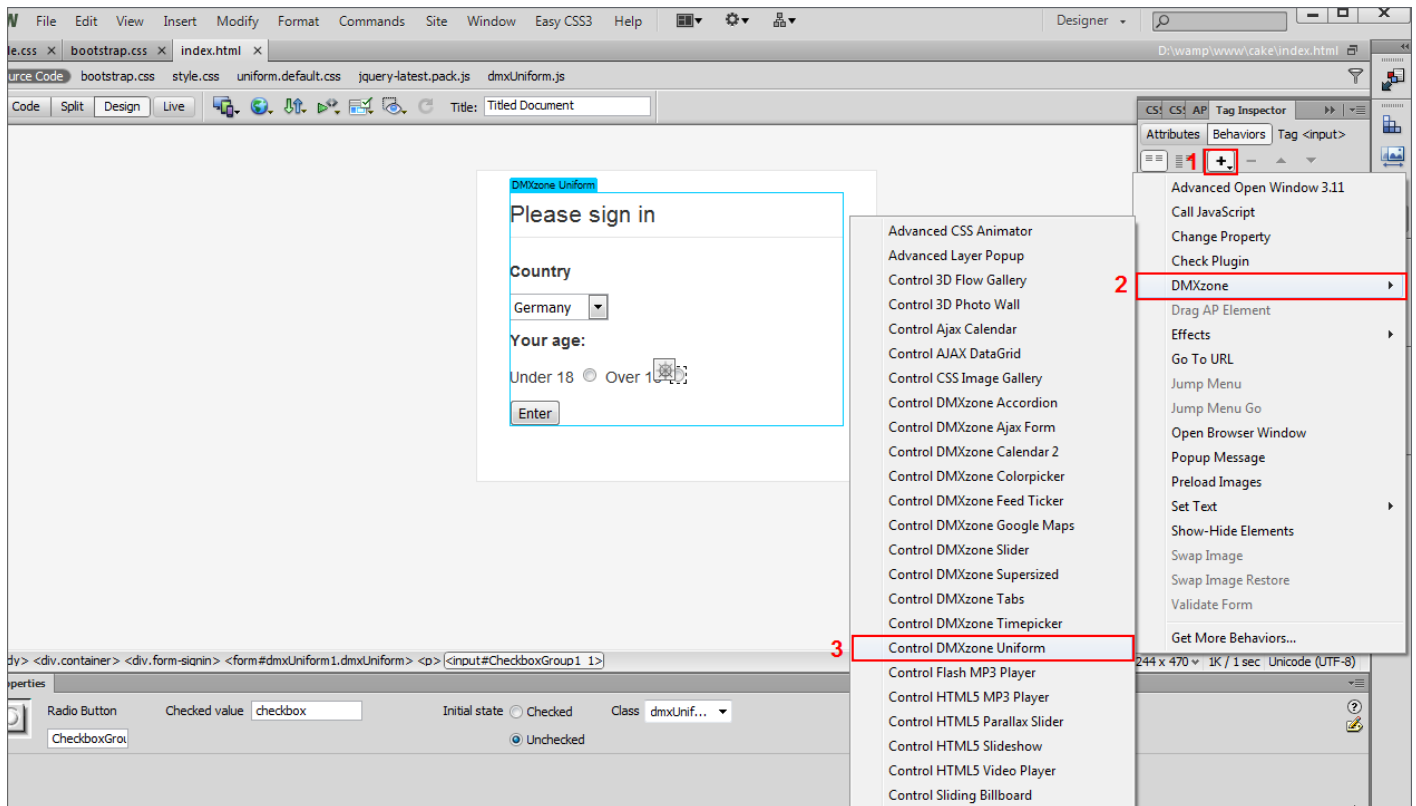
1. We've already inserted the **DMXzone Uniform** on our page that contains several different form elements. If you need to change any of the form values dynamically, the **DMXzone Uniform** has to update the style of the selected element.

The screenshot displays the Adobe Dreamweaver interface. The main workspace shows a form titled "Please sign in" with the following elements: a "Country" dropdown menu currently set to "Germany", a "Your age:" section with two radio buttons, "Under 18" and "Over 18" (the latter is selected), and an "Enter" button. A red arrow points to the "DMXzone Uniform" label above the form. The Properties panel at the bottom shows the following settings: Action, Method (POST), Enctype, HTML5 Attributes (Autocomplete), and Design (Default).

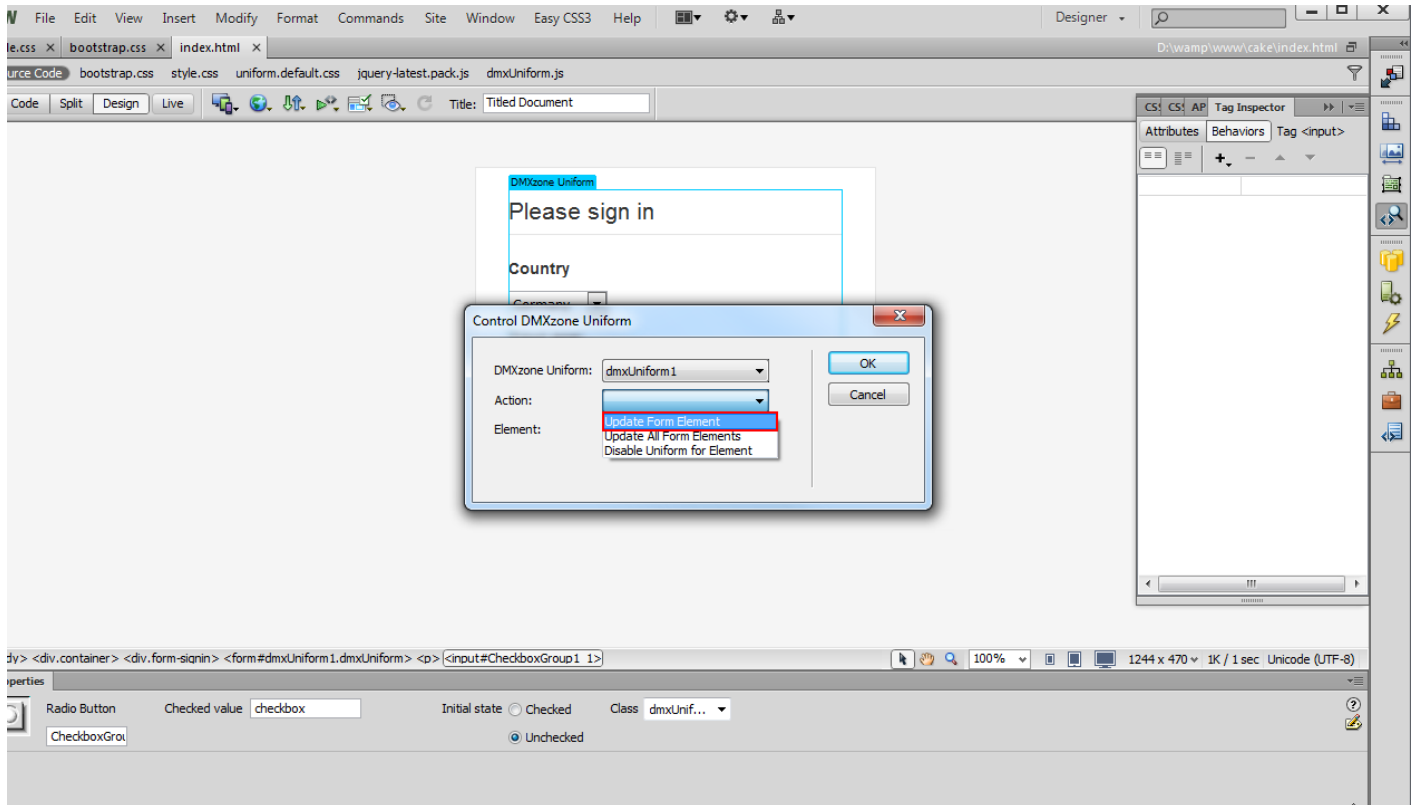
2. For our tutorial, we're going to update the submit button when one of the radio buttons is selected. Click the **radio button (1)** and select the **tag inspector (2)**.



- Click the **add behavior button (1)**, select the **DMXzone menu item (2)** and choose the **control DMXzone Uniform menu item (3)**.



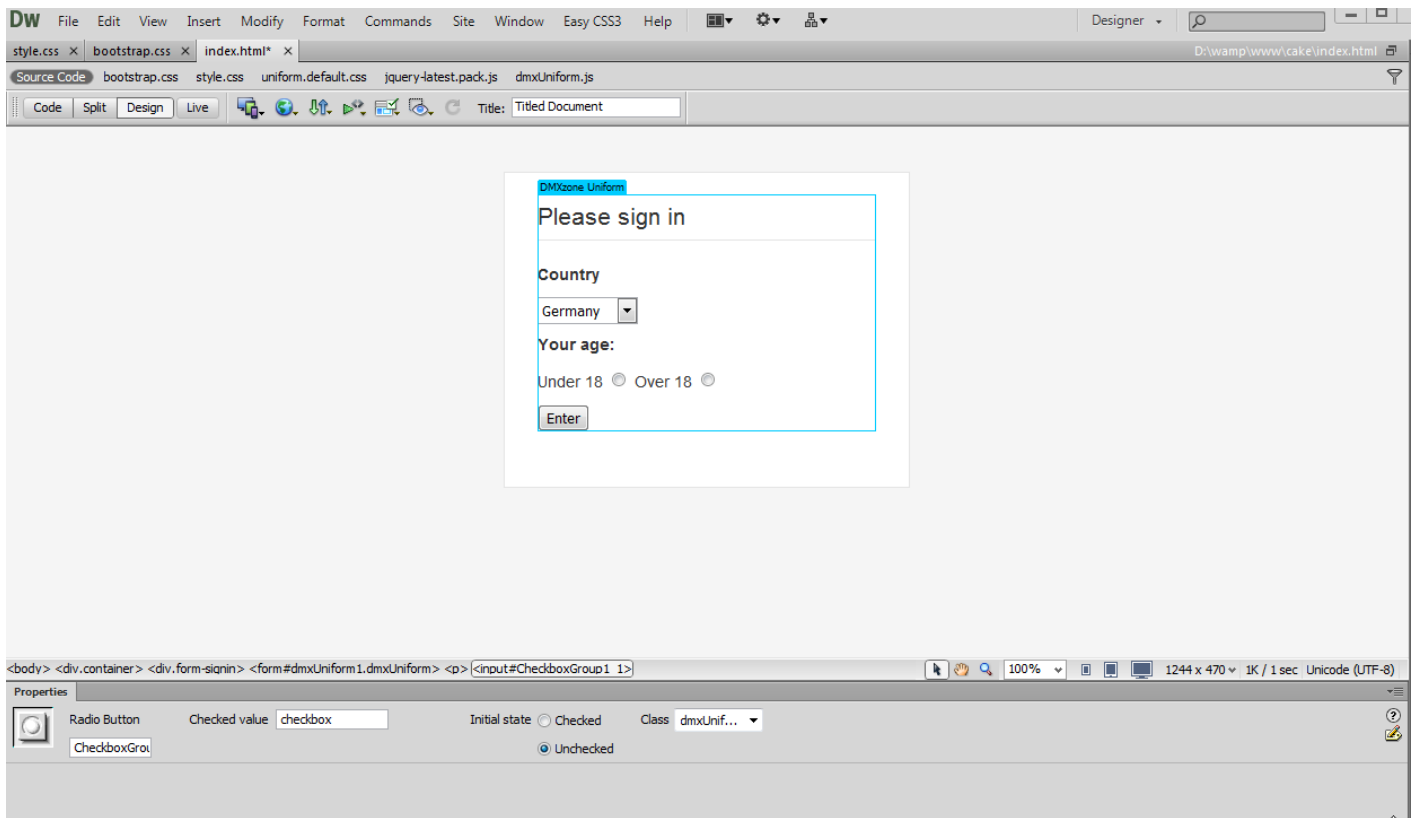
- In the **control DMXzone Uniform window** you can choose between: Update a single Form Element, Update All Form Elements or Disable DMXzone Uniform for a specific element when the radio button is selected. We need to update only our submit button, so we choose **Update Form Element** from the action drop down.



5. Enter a CSS selector in the element field. In our case we enter the **ID of the button**.

The screenshot displays a web design application interface. In the center, a dialog box titled "Control DMXzone Uniform" is open. It contains three main fields: "DMXzone Uniform" with a dropdown menu set to "dmxUniform1", "Action" with a dropdown menu set to "Update Form Element", and "Element" with a text input field containing "#submit-btn" which is highlighted with a red border. To the right of the dialog are "OK" and "Cancel" buttons. The background shows a web form with the text "Please sign in" and a "Country" label. The application's interface includes a menu bar (File, Edit, View, Insert, Modify, Format, Commands, Site, Window, Easy CSS3, Help), a toolbar, and a right-hand sidebar with various tool icons. At the bottom, a code view shows HTML tags: `<div.container> <div.form-signin> <form#dmxUniform1.dmxUniform> <p> <input#CheckboxGroup1 1>`. Below the code view is a properties panel for the selected element, showing "Radio Button" and "Checked value checkbox" options, and "Initial state" set to "Unchecked".

- That's how you can update **DMXzone Uniform** elements on demand using Dreamweaver control behaviors. Now you can save your work and preview the result in the browser.



Reference: DMXzone Uniform Designs

Choose one of the 3 stunning designs or design your own by editing the CSS. All the form elements in the **DMXzone Uniform** area will be automatically styled and will look exactly the same in all browsers!

Default

Employment Application

Which position are you applying for?

Web Developer ▾

Are you willing to relocate?

Yes No

Portfolio website

http://

Attach a copy of your resume

No file selected Choose File

Preferred OS

Windows Mac OS Both


Additional notes

APPLY

Agent

Employment Application

Which position are you applying for?

Office Manager 

Are you willing to relocate?

Yes No

Portfolio website

http://

Attach a copy of your resume

No file selected **Choose File**

Preferred OS

Windows Mac OS Both

Additional notes

APPLY

Aristo

Employment Application

Which position are you applying for?

Office Manager

Are you willing to relocate?

Yes No

Portfolio website

Attach a copy of your resume

No file selected

Preferred OS

Windows Mac OS Both

Additional notes

Video: Basic Usage of DMXzone Uniform



With this [movie](#) we will show you how to insert [DMXzone Uniform](#) on your page.

Video: Updating DMXzone Uniform Elements on Demand



With this [movie](#) we will show you how to update [DMXzone Uniform](#) elements on demand using Dreamweaver Control Behaviors.